



## insideNewberry

To honor the past...inform the present...envision the future, *insideNewberry* is published quarterly by Newberry Community Partnership (NCP) as a service to the neighborhood to promote community pride and facilitate communication between residents, schools, civic organizations and businesses. NCP is a non-profit community-based organization established in 2006. Please support our sponsors who made this issue possible!

- Diamond Square Market
- Equinox
- JB Realty
- Knight-Confer Funeral Home
- MAS Printing
- Mileto's Sub Shop
- Newberry Estates
- Newberry Laundry Basket
- Newberry Lions Club
- Newberry Sub Shop
- Newberry Xchange
- Nouvelle Ere
- PRN Home Health Services
- Ralph Steer State Farm
- Sanders Mortuary
- Smith's Tree Service
- Sons & Daughters of Italy Lodge 138
- Sunrise Real Estate
- Triple A Motors

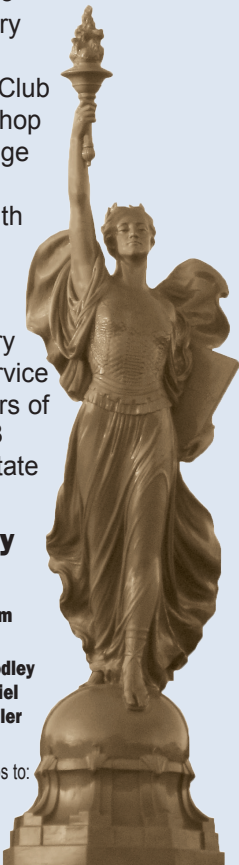
### insideNewberry

913 Diamond Street  
Williamsport, PA 17701  
[www.insidenewberry.com](http://www.insidenewberry.com)  
570-651-0634

Managing Editor: **Bob Woodley**  
Advertising: **Alannah Gabriel**  
Graphic Design: **Janice Hiller**  
Web Design: **Rod Chubb**

Submit your stories and photos to:  
[insidenewberry@yahoo.com](mailto:insidenewberry@yahoo.com)

All submissions subject to editing.



## WECCC Gets New Leadership

A new leader has assumed command at the West End Christian Community Center, but it's not a new face. Pastor Calvin Phillips, who for the past three years has been serving as the Community Outreach Liaison, will now include Executive Director in his title. That being said, he prefers to be called "Cal." Cal replaced Todd Penman, who held the position for the past five years. Cal has been a Pastor for 16 years, having earned his Bachelor's degree in Biblical Studies at Lancaster Bible College,



*Calvin Phillips, the new Executive Director of WECCC*

and a Masters at Evangelical Theological Seminary and Messiah College. The 52-year-old from Marsh Hill joined the Army after high school and worked as an intelligence analyst in New York. After Basic Training, he married his high-school sweetheart Darlene, and they now have three children and two grandchildren. Cal loves the fact that the grandkids use the same school bus stop that he did. After the Army, Cal got a paralegal degree from Penn College and worked for a number of law firms in the area. During that time he specialized in Criminal Defense, and got to know people who'd been accused of crimes. It was then that he discovered his calling: To serve the last, the lost and the least; the fringes of society.

While accumulating his education, Cal became the Senior Pastor at the East End Baptist Church on Washington Boulevard. Then, thirteen years ago, he did a "Church Plant" called "The Rock" to minister for people post prison release and addiction and recovery. Cal began his new mission at the WECCC on November 16th with Todd staying on for another month during the transition. He officially became the Executive Director on December 16th, and has a clear goal for moving the organization forward. Having experience at ministry and administration puts Cal in a prime position to continue the work Todd began, and add to it with what Cal calls "identifying community needs and aggressively addressing them." Cal sees his work as developing relationships, and serving as the Community Outreach Liaison gives him a head start. He says that if you want to change the world, you must start within your own sphere of influence.

*Continued on page 2*

# WECCC... *Continued from page 1*

The more relationships he develops, the more he'll learn about the needs of the community, and ways to customize the ministry to meet goals.

WECCC has a staff of about 30, including paid and volunteers. The four cornerstones of the organization are the Cafe, the Clothing Closet, Shoe Express, and a diaper program that Cal says will be expanded. If you need help, or would like to volunteer or donate, simply stop by the center weekdays between 9 and 2pm.

"Community is family. We're responsible for each other" says Pastor Phillips. He wants to create a sense of community and working together. Cal says a great way to start is to "Respect other people, and recognize their dignity." ~ Bob Woodley

# WEST END COPY CENTER

Inside

Email: [masprinting@comcast.net](mailto:masprinting@comcast.net)

# MAS

*Printing*

Quality, Dependable Printing  
Since 1982

116 Emery Street  
Williamsport  
570-326-9222

Located Near Williamsport  
Industrial Park,  
off Reach Road

**TYPESETTING & DESIGN SERVICES**  
**FREE PICK-UP & DELIVERY • CONVENIENT PARKING**

Digital Full Color and Black & White Copies

8 1/2 x 11 and 11 x 17 Formats

Come in and see us or simply email your files!

Large selection of paper for your business or home printer

*Printers of insideNewberry Newsletter*

# EXCELLENT OPPORTUNITY TO MEET NEW PEOPLE!

*insideNewberry* is looking for a volunteer to manage the sponsorships. If you have a few hours every quarter, and are good with people, you can contribute to the success of *insideNewberry*!

Training will be provided. Duties will include compiling copy, maintaining relationships with sponsors, and assisting current and new sponsors.

It's a good opportunity for someone with advertising experience, or if you would like to learn a new skill.

**Send your letter of interest to**  
**[insidenewberry@yahoo.com](mailto:insidenewberry@yahoo.com)**  
**or our office at**  
**913 Diamond Street**  
**Williamsport, PA 17701**

**Newberry Community Partnership would like to thank the Polish Club for their continued support of our organization and all the good things they do for the residents of Newberry, Jaysburg, and the City of Williamsport.**



**Polish Club**

**Jaysburg, PA**  
**1933 - 2020**

**SANDERS MORTUARY, LTD.**  
*Family owned since 1938.*

**Funeral Directors**

William H. Kieser – Owner/Supervisor  
Sarah E. Kieser, Larry H. & Nancy A. Sanders

[www.SandersMortuary.com](http://www.SandersMortuary.com) • 570-322-3466

821 Diamond St. Williamsport, PA 17701  
and **KIESER MONUMENTS**

# The Pandemic and the Car Market

Well, most of you are extremely busy with the usual “day to day,” and planning a new year. With all the news, some good, some bad, but all at a head-spinning pace, we are seeing the money markets rise and fall, and rise again. The real story is the elevated inflation levels and supply shortages that we are facing.

Which is the specific point of this article. Covid 19 has wreaked havoc on companies worldwide, and consumers as well. With new car manufacturers going through shut downs and supply delays, new car dealers are falling short on inventory, which in turn becomes the “Domino Effect.” People who want a new car can’t find the one they want, so they wait. Now that they didn’t trade their car, the consumer who wants the couple year old trade-in can’t find what they want, and so on, and so on. So what does this mean to the Average Joe? Supply and demand, plain and simple. In this limited market of Used, and New inventory, the sparse market is skyrocketing prices to never before seen values. I myself have been around the car market roughly 37 years. My Father has been in the business almost 60 years, and each of us agree we have never, and may never again see such a volatile and high-priced car market.

Inventory is short, prices through the roof, and everybody wants a good deal, it’s the American way for sure. This is the sticky part: Dealers are paying such a high price to stock their lots with inventory, but have to struggle with what they can sell the car for. Profits are being squeezed to the absolute minimum, and yet the American way is to

get it at a better price. We try, you try, we all try. I guess the main problem is that the general public, for the most part, have no idea why prices are so high. Most think that the dealers are just making money hand over fist, but that just couldn’t be further from the truth. Supply is just so limited, and prices so high, the buyer’s anxiety levels raise as well. It becomes nerve racking to go car shopping. It almost begins to feel confrontational for some people, with price negotiations, and Covid 19 mandates and fears thrown into the mix, it’s no wonder people are running around full of anxiety.

This will pass. It may take 15 to 24 months, but the market will settle, and things will slowly return to a more steady course for all of us. Relax, do your homework when shopping, find what you want, and be prepared to pay a little more than expected for now. God Bless from all of us at Triple A Motors ~ Submitted by Scott Alan Feist

570-329-2808

www.newberryexchange.com

## NEWBERRY XCHANGE

BUY & SELL

Diamonds • Gold • Televisions • DVDs  
Video Games • Coins and More

846 Diamond Street  
Williamsport, PA 17701

By Appointment Only

## Nouvelle Ere

Jonathan Probst  
Jeff Dowling



Thursday 10-5:30  
Friday 10-5:30  
Saturday 10-3

Also available by appointment

Phone: 570-506-2650

Nouvelleerejds@gmail.com

2400 West Fourth Street  
Williamsport, PA 17701

## JB REALTY

COMMERCIAL PROPERTY AVAILABLE

NEWBERRY PLAZA - 1,100 SQ FEET, 1967 W 4TH ST

CALL FOR DETAILS

PHONE - 570.323.0799

EMAIL: Kelly.jbrealty@gmail.com



# Airplane Makes Road Trip to Memorial

If you've driven by the Lycoming County Veterans Memorial Park lately, you may have noticed a rather large airplane. It's the newest addition to the memorial, and it took a very circuitous route to its current spot. I recently met with veterans Denny Bennet, Don Young and John Markley at the memorial park to talk about the A6E Intruder now on display there, and they had a good story to tell. As it turns out, they were looking for a helicopter for the memorial, when they came across an airplane instead. Oh, they also found a helicopter, but couldn't pass up having a piece of history like this airplane on display at the memorial.

## ***Where Did It Come From?***

Believe it or not, this plane has been in Lycoming County for the past 25 years. It spent most of that time at the airport in Montoursville. It flew in on September 18th, 1996 as a gift to Pennsylvania College of Technology, the most valuable gift ever received by the school. This A6 Intruder cost 20 million dollars to build in 1984! Commander Jeff Winston of the US Navy flew the plane here from Patuxent River Naval Air Station in Maryland. Prior to its last flight, the plane was disarmed and deactivated and explosives disposed of to make it safe for students to work on and learn from. Eventually, the lessons this particular plane could provide became obsolete, and the aircraft was left idle.

## ***How Did It Get To Where It Is Now?***

After more than a year of coordination and planning, the plane was moved to the park by flatbed truck. There were two reasons for this: 1) The plane couldn't fly anymore and 2) There's no runway at the memorial! However, it wasn't just a case of dropping the plane onto a truck and driving it to the site. First of all, there wasn't a gate large enough to get the plane through the fence around the airport. Second, the plane was too wide, even with its wings retracted, to travel along the road in front of the airport. Finally, with help from Savoy Contract Furniture, they were able to get the plane outside the fence and onto roads large enough to accommodate the width of the aircraft. Alison Crane supplied the means to get the plane on a flatbed, and the flatbed was supplied by High Steel. Three route surveys were done for this "Super load" before a final plan could be put in place. With the cooperation of the PA State Police, the aircraft was escorted to the memorial site on October 28, 2020.

## ***Where Has It Been?***

Built in 1984, this A6E Intruder had more than a decade of service. It was delivered to the Navy from Grumman by the same pilot who delivered it to PCT. It's been slung-shot from an aircraft carrier 1,156 times and had 1,158 arrested landings as well. It has

*Continued on page 5*



*The A6 Intruder on a mission*



This A6 Intruder as it stands today, now on display at the war memorial on Wahoo Drive.

## Airplane Makes Road Trip to Memorial *Continued from page 4*

4,180 flight hours on it. Primarily a Naval aircraft, it was mostly found on aircraft carriers. The A6E was used extensively in the Persian Gulf War. Perhaps most notably, this specific aircraft participated in the bombing raid on Libya in 1986. President Reagan ordered the assault after terrorists bombed La Belle's discotheque in West Berlin, Germany, killing three people and injuring 229. Captain Mike Bogt was the pilot for that mission.

### What's Next?

Pennsylvania College of Technology is still involved with the project. Some wrinkling of the skin of the aircraft occurred during transport, and students will make repairs. Then, when enough funds are raised, the plane will be sandblasted by Pete Bower, and

painted with paint from Orelli Supply. Eventually, it will look like it did in its heyday, with the ID number 503 painted just below the cockpit and the Warhorse logo on the tail. The wings will be unfolded and moved to a slightly different position from where it is now. A cement walkway will be poured around it. If you would like to contribute to the cause, your help will be greatly appreciated. The work to get the plane to its current spot was done mostly by volunteers, and much of the materials needed for the refurbishing are being donated, but there's still a lot to be done, so any donations are welcome. If you would like to donate or volunteer, contact the Lycoming County Veterans Memorial Park by going to their facebook page at [facebook.com/LycomingCountyVeteransMemorialPark](https://www.facebook.com/LycomingCountyVeteransMemorialPark). ~ Bob Woodley

*Continued on page 6*



*Knight-Confer*  
FUNERAL HOME, INC.  
*A Tradition of Excellence Since 1879*

<p><b>John M. Confer</b> Funeral Director</p>	<p><b>John E. Springman</b> Funeral Director</p>	<p><b>Kristen M. Hess</b> Funeral Director</p>
---	--	--

1914 Memorial Avenue Williamsport, PA 17701  
Phone: 570-323-7717 Email: [KCFH@KnightConfer.com](mailto:KCFH@KnightConfer.com)  
[www.KnightConferFuneralHome.com](http://www.KnightConferFuneralHome.com)  
Michael R. Lingg, Licensed Supervisor



**Mileto's**  
EST. 1972  
**SUB SHOP**  
**& Pizza**

2127 West 4th St.  
570-323-0103

**Home of the Famous "POUNDER" Cheesesteak!**



## A6E INTRUDER SPECIFICATIONS

*Data from Jane's All The World's Aircraft 1982-83[77]*

*Jet Bombers: From the Messerschmitt Me 262 to the Stealth B-2[78]*

### General Characteristics

Crew: 2 (pilot, bombardier/navigator)  
Length: 54 ft 9 in (16.69 m)  
Wingspan: 53 ft 0 in (16.15 m)  
Width: 25 ft 2 in (7.67 m) wing folded  
Height: 16 ft 2 in (4.93 m)  
Wing area: 528.9 sq ft (49.14 m<sup>2</sup>)  
Aspect ratio: 5.31:1[79]  
Empty weight: 26,660 lb (12,093 kg)  
Max takeoff weight: 60,400 lb (27,397 kg)  
(shore-based operations)  
Fuel capacity: 2,385 US gal (1,986 imp gal; 9,030 L) (internal fuel)  
Zero-lift drag coefficient: 0.0144[79]  
Powerplant: 2 × Pratt & Whitney J52-P8B turbojets, 9,300 lbf (41 kN) thrust each

### Performance

Maximum speed: 560 kn (640 mph, 1,040 km/h) at sea level  
Cruise speed: 412 kn (474 mph, 763 km/h)  
Stall speed: 98 kn (113 mph, 181 km/h) (flaps down)  
Never exceed speed: 700 kn (810 mph, 1,300 km/h)  
Combat range: 878 nmi (1,010 mi, 1,626 km) (with max payload)  
Ferry range: 2,818 nmi (3,243 mi, 5,219 km)  
Service ceiling: 42,400 ft (12,900 m)  
g limits: -2.4 to 6.5  
Rate of climb: 7,620 ft/min (38.7 m/s)  
Lift-to-drag: 15.2[79]  
Take-off run to 50 ft (15 m): 4,530 ft (1,380 m)  
Landing run from 50 ft (15 m): 2,540 ft (770 m)

### Armament

Hardpoints: Five hardpoints with a capacity of 3,600 lb (1,600 kg) each (4 under wings, 1 under fuselage), 18,000 lb (8,200 kg) total, with provisions to carry combinations of:

### Rockets:

12x LAU-10 4-round 5 inch Zuni pods  
12x LAU-68 7-round 2.75 inch FFAR pods  
12x LAU-61/LAU-68 19-round 2.75 inch FFAR pods

### Missiles:

AGM-45 Shrike anti-radar missile[80] × 2  
AGM-78 Standard ARM anti-radar missile[81] × 2  
AGM-62 Walleye TV-guided glide bomb[82]  
AGM-65 Maverick air-to-ground missile[82] × 6  
AGM-84 Harpoon anti-ship missile[82]/AGM-84E Standoff Land Attack Missile[83] × 4  
AGM-88 HARM anti-radar missile  
AGM-123 Skipper air-to-ground missile  
AIM-9 Sidewinder air-to-air missile[84]  
ADM-141 TALD decoy missiles[85]

### Bombs:

28x Mk 82 500 lb (227 kg) GP bombs or Mk 20 Rockeye II cluster bomb[80] [note 1]  
13x Mk 83 1,000 lb (454 kg) GP bombs[80]  
5x Mk 84 2,000 lb (907 kg) GP bombs[80]  
5x GBU-12/16/10 laser-guided bombs  
5x CBU-72 Fuel-Air Explosives[80]  
Up to three B43 × 1 /B57/B61 "Special Weapons"[80]

### Other:

Mk 60 Captor Mine  
Up to 5300 US gal (250 imp gal; 1,100 L) drop tanks  
Various practice stores, chaff launchers, baggage pods, flares[80]

# Historic Club Opens New Lodge in Newberry

An elaborate system of bugle calls was used to summon and command the Bersaglieri, a mobile, light infantry in the Italian army beginning in 1836.



*The bugle that summoned the Bersaglieri*

Today, the bugle hangs on the wall, but the calls still go out to the Ufficiale Bersaglieri Williamsport Lodge 138. Granted a charter in 1903, the lodge is two years older than its original parent organization, Order Sons of Italy in America. It was started by men who's names are still familiar in the area. Names like Vannucci, Casale, and Chianelli. A brass plaque was forged to commemorate the occasion of incorporation, and it hangs on the wall of the new Lodge 138. Now, it's simply "Sons and Daughters of Italy Lodge 138."

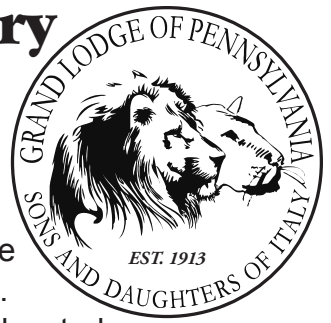
Many of us are familiar with the food trailer the lodge operates. You may have seen it at block parties, community events and food truck rallies. It's famous for meatball and sausage sandwiches. But the history of the lodge predates the food truck. The original purpose of the organization was to provide a space where people from the "old country" could get together and talk about their experiences in the New World. A support group of people with two common languages and the desire to pass along old country traditions to their children. Education, in both English and Italian, was a cornerstone of the organization.

Today, the objectives of the organization have changed, but the direct link to Italy is still an important element of its identity. To become a member, you had to have Italian lineage. A


non-Italian spouse was also allowed to join. Those rules still apply. One of the differences now is that there isn't an "Italian section" of the city like there was back then.

For decades, the lodge was located at 144 East 4th Street in the city. Many of the neighbors were of Italian descent, and people naturally gravitate to other people like them, with similar histories and backgrounds, making it easy to find a place to congregate within a block or two. We're much more homogenized today, and people of similar cultures are spread far and wide. Ethnic organizations are finding it harder to attract members because many of us have a variety of ethnic lineages, none of which is dominant or sometimes even recognizable.

Sons and Daughters of Italy Lodge 138 is proof, though, that there are still people who want to hang on to, or perhaps learn about, their Italian heritage. That heritage continues at their new headquarters in Newberry.



*Continued on page 8*

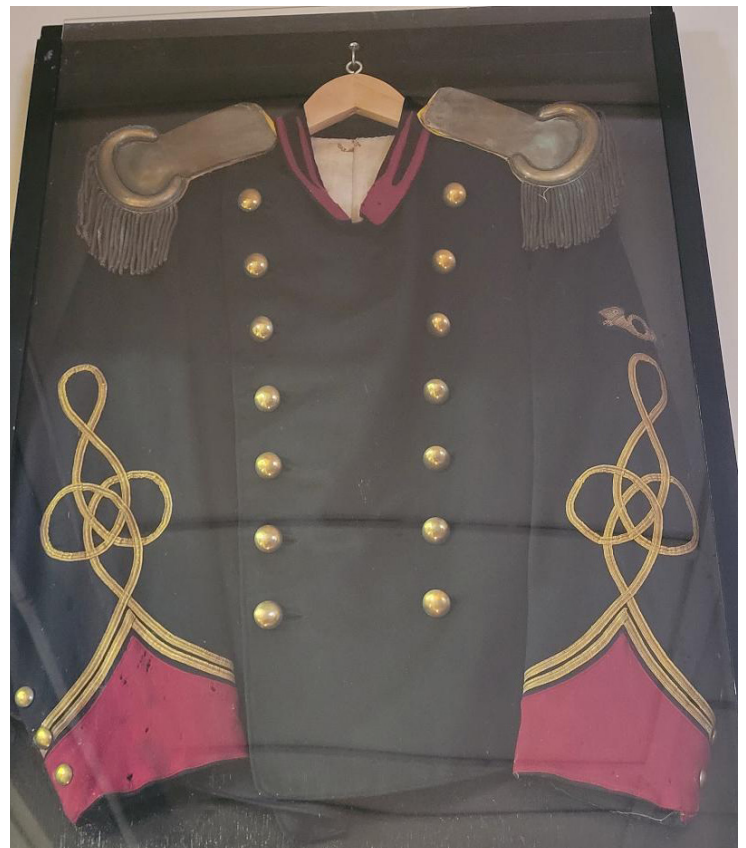


**Loggia Ufficiale  
Bersaglieri  
Sons & Daughters  
of Italy Lodge 138**

Corner of  
Poplar Street & Trenton Ave



Home of Our Famous Meatball & Sausage Subs with Weekly Specials



*The uniform of the Ufficiale Bersaglieri*

## Historic Club... *Continued from page 7*

On the corner of Poplar Street and Trenton Avenue, in what used to be, among other things, an auto repair shop, Lodge 138 is new again. Beginning about ten years ago, the building was purchased and the work began to renovate the building into Lodge 138, with all the comforts of a club anyone would be proud to join. With its history proudly on display, including the original brass plaque listing the names of the original members, Lodge 138 is still carrying on the traditions of its founders.

The Sons and Daughters of Italy Lodge 138 is also a philanthropic organization, donating funds to other non-profit organizations working to combat disease and other threats, as well as disaster relief in various parts of the world. Naturally, fundraising is needed to provide those donations, and the new lodge building will go a long way toward fulfilling those objectives. The inside of the building now includes a full industrial-type kitchen where the lead Chef, Joe Mignano, will be making their famous sausages and delicious Italian meatballs. The good news is that you'll be able to get them even if you're not Italian! Beginning near the end of January, if all goes according to plan, Lodge 138 will be serving those delicacies every Thursday and Friday, plus soups, drinks and other specials. If you love the food you've had from the truck, you'll love the food you get from the lodge! With any luck, the virus will be a memory this spring. When that happens, you'll be able to take a seat in the lodge to enjoy your authentic Italian delights. Until then, it'll be take-out only, of course. But your patronage will still help Lodge 138 accomplish its mission of helping people, Italian or not. You can find the lodge on facebook to keep up with how the plans are going, and operating hours.

The current members of Lodge 138 are hoping to carry on the values of its founders, and the new building will give them a place to make plans and continue the legacy. The bugle may now just hang on the wall, but the call still goes out. Sons and Daughters of Italy Lodge 138 is always looking for members. If you have Italian lineage and would like to join, contact the Lodge. ~ *Bob Woodley*

## Commercial Facade Repair & Improvement Program

Newberry commercial property owners should take note that the Williamsport



Commercial Facade Program is back. The program offers low interest loans for repairs and improvements to the exterior of commercial property. (Think coffee bar, barber shop, auto repair, retail store ...etc.) The City Hall Community Development Office is taking applications now for work to be done next spring. This is the time to think about getting a new roof, windows or doors. What about a business sign, handicapped accessibility improvements or a new paint job? The City will help you get bids for the work, too. The CD Office explained that new construction is not eligible, they can only work on commercial sections of a building and that any hazardous conditions have to be addressed before making cosmetic improvements.

You can apply for a **1% interest** loan of up to \$10,000. Monthly repayment is required. So if you have a commercial site located in Newberry (or anywhere else in the City of Williamsport) call the Community Development Office at 570-327-7513 and make repairs and improvements to your business.

You can get an application or just get more information. As always, funds are limited, so act now. ~ *Submitted by Mary Rucinski, Assistant Director, Community Development*

### Smith's Tree Service

**570-447-5805**  
Serving Central PA for over 40 years  
Fully Insured  
Removal \* Trimming \* Stump Removal \* Planting  
FREE ESTIMATES



# A Word from the WECCC

I am so blessed to be able to pick up the reigns of leadership here at the West End Christian Community Center. After more than five years, Todd Penman is retiring as our Executive Director. We are sad to see him leave but are happy that he and his family are embarking on a new chapter in their lives. My wife and I have been lifelong Lycoming County residents and have raised our family here. I have served in a variety of roles but am energized to be given the honor of being named as the Executive Director.

This past year has posed many challenges but also has created new opportunities to serve, just in different ways. When the CDC Covid 19 guidelines eased we had resumed serving meals in our dining room as well as to-go meals. With the increasing numbers of cases in our area, and in an effort to minimize exposure for both our volunteers and those that choose to dine with us, we went back to "out the door" meals only. We are continuing to prepare healthy and nutritious meals that can be picked up at our Diamond Street entrance and eaten in the privacy of people's homes.

We are monitoring the numbers of individuals that are in the building for our other programs.

Hand sanitizer dispensers can be found in various common areas and masks must be worn at all times while in the building as well



as while picking up meals at our entrance. Through these efforts we have been able to keep the majority of our services open and available.

"Courage is not the absence of fear but rather the assessment that something is more important than fear"- Franklin D. Roosevelt. These are scary times but we as a community are far stronger than any virus or any obstacle, the key to overcoming is that we overcome united as one. The WECCC is here and will continue to drive forward with an amazing team of staff and volunteers. We are not frightened by 2021. Our various services may look a bit different, but whether it is our S.K. Café, Cloths Closet, Thrift Shop, Diaper Program or Shoe Express, we will find a way to work side by side with our community! Until next time.~  
*Submitted by Calvin Phillips, Executive Director*


## NEWBERRY ESTATES

A NATIONALLY RECOGNIZED COMMUNITY OF QUALITY®  
Professionally Managed by Community Realty Management, Inc.



Suite 357  
2500 Federal Avenue  
Williamsport, PA 17701

570-323-8910  
Fax 570-323-1918  
T.D.D. 1-800-654-5984



## **ROD CHUBB**

### **SCHOOL OF GUITAR**

Private Instruction Available On:

- Guitar
- Bass
- Music Theory
- Sight Reading
- Improvisation
- Composition

**ALL AGES - ALL STYLES - ALL LEVELS**

## **570.220.3269**

[www.rodchubb.com](http://www.rodchubb.com)

**State Farm®**  
Providing Insurance and Financial Services  
Home Office, Bloomington, Illinois 61710

Ralph Steer, Agent  
1945 West 4th Street  
Williamsport, PA 17701  
Bus: 570-323-2111  
Ralph@ralphsteer.com

P045151 4/04





# The NEWBERRY



## Laundry Basket

**CLEAN, CONVENIENT LOCATION**  
620 Arch Street • Newberry, PA 17701  
Open Daily 6:30 AM - 9:30 PM • Off Street Park



Without the regular fanfare of past years, the Newberry Christmas Tree was lighted on December 6. Thank you to the city Department of Streets and Parks, Lamar Advertising, and Brodart for their help, and to Helminiak's Nursery for donating the tree.



**DIAMOND SQUARE**  
Market • Deli • Cafe

2131 West 4th Street Williamsport, PA

Call 570-567-7322 for Take-Out Orders.

Hours: Monday- Friday 8AM-6PM

Saturday 9AM-4PM

\*Like us on Facebook to follow our specials!

## NEWBERRY LIONS CLUB

"We serve"

PO Box 4051  
Williamsport, PA 17701

Contact any Lions member to learn  
more about Newberry Lions  
or to become a member.



Doug Lawton, President; Jack Coleman, Secretary; John Confer, Treasurer

FULL SERVICE USED CAR DEALER  
STATE INSPECTION & EMISSION TESTING



Alan L. Feist  
Scott A. Feist

1898 West Third Street  
Williamsport, PA 17701

Ph: 570-326-1769  
Fax: 570-326-1054

**PROVIDING THE HIGHEST QUALITY CARE FOR YOUR LOVED ONES**

PRN Medical Staffing, Inc. DBA

## PRN Home Health Services

- Nursing Services
- Personal Care
- Housekeeping



**MEDICARE  
CERTIFIED**



www.prnhomehealth.com • Fax 570-567-7625

**2134 WEST FOURTH STREET • WILLIAMSPORT • 570-567-7627**

## LINCOLN SENIOR COMMUNITY CENTER

STEP Building

(Old Lincoln School - Lower Level)

2138 Lincoln Street • Newberry

**Let's Do Lunch at Noon!**

Monday thru Friday • Call 327-5483

by 10:30 AM Day Before to Order a Hot Meal

**Computer Use & Treadmill Available**

**Morning Coffee Klatch with Friends**

### CALENDER OF EVENTS

SETBACK TOURNAMENT .....First Thursday of the Month  
• Pre-registration

BINGO .....Mondays, Wednesdays, & Fridays 12:30 PM

HEALTHY STEPS IN MOTION EXERCISE

FOR MATURE ADULTS .....Tuesdays & Thursdays 9:30 am

Bible Study w/Local Clergy .....Wednesdays 12:15 PM

BLOOD PRESSURE CLINIC

Performed by Penn College Student Nurses

2nd Wednesday of the Month – call for details.

TAI CHI FOR ARTHRITIS

Level 1 .....5 PM Tuesdays & 10:30 AM Thursdays

KNITTING GROUP .....Tuesdays 11 AM

ZUMBA GOLD .....Wednesdays 4:30 to 5:30 PM



# Regular Meetings of Civic & Other Groups in Newberry

## ALCOHOLICS

**ANONYMOUS (AA)** ..... 570-323-6297

Meets Wednesdays & Saturdays

7:00 PM • WECCC

*If attending, use side entrance  
off gravel parking lot.*

*The support group welcomes new members.*

*For additional information, call the*

*WECCC office at the number listed above.*

**BOY SCOUT TROOP 14** ..... 570-326 5569

Every Monday • 7:00 to 8:30 pm

St. John's-Newberry UMC

2101 Newberry Street

*John Andreacci, Scoutmaster*

*Open to boys age 11 or older*

**CUB SCOUT PACK 14**..... 570-326-5569

Every Monday • 6:30 to 7:00 pm

St. John's-Newberry UMC

2101 Newberry Street

*Open to boys in Grades 1-5 or ages 7-11*

## NEWBERRY COMMUNITY

**PARTNERSHIP** ..... 570-651-0634

3rd Wednesday of the Month • 5:30 pm

WECCC

913 Diamond Street

*If you would like to present an idea or have a  
neighborhood concern, please call or email*

*[insideNewberry@yahoo.com](mailto:insideNewberry@yahoo.com)*

*to be placed on agenda.*

## NCP SAFE, CLEAN

**& GREEN TEAM**..... 570-651-0634

2nd Tuesday of the Month • 5:30 pm • Kast Hotel

*We welcome visitors and new members.*

**NEWBERRY LIONS** ..... 570-326-0259,

570-323-7769

2nd & 4th Tuesday • 6:30 pm

Lions Building • Newberry Park

**SONS OF ITALY LODGE 138**..... 570-326-9222

2nd Monday • 7:00 pm

## THE LEAGUE OF WOMEN VOTERS OF PENNSYLVANIA

**Please join us** for the League of Women Voters of Lycoming County monthly meetings held the second Thursday of each month @ 5:15pm.

**Where:** Dining room A, lower level at Divine Providence Hospital. Take Elevator B in main lobby to lower level, bear right and first door on left. (You can see Dining Room A from the elevator).

### NOTE:

These are active groups that welcome new members, let them know you'd like to attend. To be listed, contact the Editor, *insideNewberry*, 913 Diamond Street, Newberry, PA 17701 or [insideNewberry@yahoo.com](mailto:insideNewberry@yahoo.com).



## OUR HOME PAGE...

[www.insidenewberry.org](http://www.insidenewberry.org)

We're on the World Wide Web! You can now find *insideNewberry* on the internet. Read current and past issues of the newsletter.

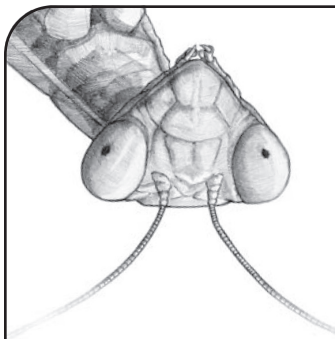


Dawn R. Cohen  
Realtor®  
Broker/Owner

570-651-9205 Phone  
570-505-1872 Fax  
136 Catawissa Avenue  
Williamsport, PA 17701



Cell 570-916-6480  
Web [sunriserealestate.net](http://sunriserealestate.net)  
Email [dawn@sunriserealestate.net](mailto:dawn@sunriserealestate.net)



Shop  
[www.equinoxltd.com](http://www.equinoxltd.com)  
for great outdoor  
gear

**EQUINOX**

Fundamental Tools for Earth Travelers  
WILLIAMSPORT, PA



## Newberry Sub Shop

**Residential and Commercial Delivery!!**

*Delivery Offered on Thursday, Friday and Saturday.....*

2002 Newberry Street  
Williamsport, PA 17701  
Phone: 570-326-5544  
Fax: 570-666-3332

### HOURS:

Monday thru Saturday  
10 AM - 9 PM  
Sunday 4 PM - 8 PM

Cold Subs - Cosmos -  
12 " Wraps - Cheese Steaks -  
Chicken Cheese Steaks -  
Home Made Meatballs -  
8" Soft Shell Tacos - Salads - Pizza

MC - Visa - Discover - AMEX Accepted.  
Family Owned Since 1980



# UPCOMING EVENTS

## JANUARY 2021

**MONDAY, JANUARY 18 – Martin Luther King, Jr. Date (Federal Holiday)**

**WEDNESDAY, JANUARY 20 – 59th United States Presidential Inauguration**

## FEBRUARY 2021

**TUESDAY, FEBRUARY 2 – Groundhog Day**

**SUNDAY, FEBRUARY 7 – Super Bowl**

**SUNDAY, FEBRUARY 14 – Valentine's Day**

**MONDAY, FEBRUARY 15 – President's Day**

**TUESDAY, FEBRUARY 16 – Mardi Gras**

**WEDNESDAY, FEBRUARY 17 – Ash Wednesday**

## MARCH 2021

**FRIDAY, MARCH 5 – Employee Appreciation Day**

**SUNDAY, MARCH 14 – Daylight Savings Starts, Set Your Clocks Ahead One Hour**

**WEDNESDAY, MARCH 17 – St. Patrick's Day**

## APRIL 2021

**WEDNESDAY, APRIL 1 – April Fool's Day**

**FRIDAY, APRIL 2 – Good Friday**

**SUNDAY, APRIL 4 – Easter Sunday**

**THURSDAY, APRIL 15 – Tax Day**

**FRIDAY, APRIL 30 – Arbor Day**

## MAY 2021

**WEDNESDAY, MAY 5 – Cinco de Mayo**

**SUNDAY, MAY 9 – Mother's Day**

**SATURDAY, MAY 15 – Armed Forces Day**

**MONDAY, MAY 31 – Memorial Day**