



insideNewberry

To honor the past...inform the present... envision the future, insideNewberry is published quarterly by Newberry Community Partnership (NCP) as a service to the neighborhood to promote community pride and facilitate communication between residents, schools, civic organizations and businesses. NCP is a non-profit community-based organization established in 2006. Please support our sponsors who made this issue possible!

- Diamond Street Market, Deli & Café
- Equinox
- Erb's West End Market
- JB Realty
- Knight-Confer Funeral Home
- MAS Printing
- Mileto's Sub Shop
- Newberry Estates
- Newberry Laundry Basket
- Newberry Lions Club
- Newberry Subs
- Newberry Xchange
- Ralph Steer State Farm
- Sanders Mortuary
- Sunrise Real Estate
- Triple A Motors

insideNewberry

913 Diamond Street
Williamsport, PA 17701
www.insidenewberry.com
570-651-0634

Managing Editor: **Bob Woodley**
Advertising: **Alannah Gabriel**
Graphic Design: **Janice Hiller**
Web Design: **Rod Chubb**

Submit your stories and photos to:
insidenewberry@yahoo.com

All submissions subject to editing.



Central Pennsylvania Food Bank

NEWBERRY FACILITY FEEDS THOUSANDS

What started as a one-day demonstration project on World Food Day in 1981 to address the needs of families struggling with hunger, has now turned into the largest non-profit food distribution organization in central Pennsylvania.

The Central Pennsylvania Food Bank (under the umbrella of Feeding America and Feeding Pennsylvania) serves 27 counties from the border of Maryland to the border of New York. For more than 30 years there have been many positive changes to the organization, including expansions to both healthy food hub locations in Harrisburg and Williamsport to better serve the community.



Now the Central Pennsylvania Food Bank is taking on a new initiative, taking food drives to the virtual world.

During the holiday season, you may have seen a plethora of red barrels or donation boxes throughout the community, in places such as grocery stores, theaters, churches and schools, used to host food drives that benefit the Food Bank.

"Food Drives are a powerful connector for the communities we serve, not just at the holidays but throughout the year, bringing awareness to our mission of fighting hunger, improving lives, strengthening communities," stated Joe Arthur, Executive Director of Central Pennsylvania Food Bank. "And now we have created virtual food drives for busy people to more easily help our cause."

As more individuals turn to new ways of giving back with online tools like GoFundMe and Facebook fundraising, it was only a matter of time before the Food Bank jumped into the world of online giving, especially with the continued popularity of online campaigns and the social activity surrounding them.

What is a virtual food drive? A Virtual Food Drive is a web-based tool allowing individuals and organizations to host a food drive online through the Central Pennsylvania Food Bank's website. The online site has a fun approach of scanning food



(Continued on Page 2)

Central Pennsylvania...

(Continued from Page 1)

at a check-out station instead of going to the store, buying an item, and finding a drop off location. With just a few clicks, anyone can purchase the most-needed items and make a difference in the lives of our neighbors in need.

“Holding a virtual food drive provides an easy, immediate and impactful way for you or your group to get involved with ending hunger,” said Arthur. “It allows for 100% group involvement, is eco-friendly, cost efficient and you can make a difference from the comfort of your home, on your phone or at your desk.”

Since the Central Pennsylvania Food Bank is able to generate six meals from a donation of just \$1, an individual or organization that sets a goal of \$1,000 will be able to provide 6,000 meals to their neighbors. Many organizations also commit to matching their employees’ donations, up to a specified level, as a community outreach initiative.

In addition, a virtual food drive allows the Central Pennsylvania Food Bank to obtain and distribute healthy and nutritious food including fresh fruits and vegetables, dairy products and center of the plate proteins. One of the Food Bank’s main strategic imperatives is improving the health of the individuals in the 27 counties they serve by providing access to enough nutritious food for everyone struggling with hunger.

The demand for food continues to rise. In Pennsylvania, one in nine residents, including one in six children, face food insecurity, according to Feeding America. The programs of the Central Pennsylvania Food Bank reach more than 400,000 individuals and include ElderShare, MilitaryShare (aimed at veterans in the community), Fresh Express, BackPack Programs, Kids Café, Summer Pantries and Summer Feeding. In 2017, the Central Pennsylvania Food Bank distributed more than 55 million pounds of food (of which nine million was produce) from its two healthy hub locations in Harrisburg and Williamsport.

The Food Bank solicits, inventories and distributes food and other donated products to more than 900 partner agencies (food pantries, soup kitchens, shelters, etc.) that directly serve people struggling with hunger. In 2017, the Food Bank distributed over 55 million pounds of nutritional food. That is the equivalent to 46 million meals!

To start your own virtual food drive fundraising team and help support those in need in your community,

click on the food donations tab located in the header at www.centralpafoodbank.org or call 570-321-8023.

The Central Pennsylvania Food Bank’s Healthy Hub is locally located at 3301 Wahoo Drive in Williamsport, PA 17701. ~ Submitted by Carla Fisher, Central Pennsylvania Food Bank Marketing & Communications Coordinator

LINCOLN SENIOR COMMUNITY CENTER

STEP Building
(Old Lincoln School - Lower Level)
2138 Lincoln Street • Newberry

Let’s Do Lunch at Noon!

Monday thru Friday • Call 327-5483
by 10:30 AM Day Before to Order a Hot Meal

Computer Use & Treadmill Available
Morning Coffee Klatch with Friends

CALENDER OF EVENTS

SETBACK TOURNAMENT
First Thursday of the Month • Pre-registration

BINGO
Mondays, Wednesdays, & Fridays 12:30 PM

HEALTHY STEPS IN MOTION EXERCISE
FOR MATURE ADULTS
Tuesdays & Thursdays 9:30 am

Bible Study w/Local Clergy
Wednesdays 12:15 PM

BLOOD PRESSURE CLINIC
Performed by Penn College Student Nurses
2nd Wednesday of the Month – call for details.

TAI CHI FOR ARTHRITIS
Level 1 – 5 PM Tuesdays & 10:30 AM Thursdays

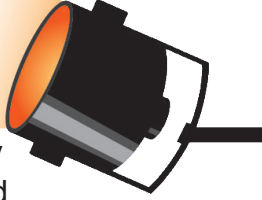
KNITTING GROUP
Tuesdays 11 AM

ZUMBA GOLD
Wednesdays 4:30 to 5:30 PM

NEW BUSINESS SPOTLIGHT

Hibbler's Newberry News Diner

DINER HARKENS BACK TO SIMPLER TIME



Near the corner of 4th and Arch Streets, Hibbler's Newberry News Diner is bringing back fond memories for the new owners. "It was called the Newberry News when I was a kid," says Rich Hibbler, who's mother Diane and wife Wendy talked him in to reopening the diner after the former proprietors left. "I used to come here back in the early '70's when I didn't want to go to school. There was a pool hall in the back, and if the truant officer came in the front door, we'd all go out the back door. That's why I wanted to call it the Newberry News Diner."

Although there is no pool hall these days, the diner itself still has that old-time diner charm. It's been completely remodeled, but the food is still prepared behind the counter, which is rare, and the customers themselves also create a sense of how one might imagine a diner of yesteryear. You can tell who the regulars are by the gentle ribbing they bestow upon each other, but newcomers are welcome to join in the conversation. Wendy



Wendy and Rich Hibbler, proprietors of Hibbler's Newberry News Diner.

Hibbler says she wanted to create a comfortable, family-type atmosphere. It's easy to do when five family members are on the staff of nine.

Under new management since August, Newberry News Diner is clean and spacious, with eleven seats available at the counter, along with 34 seats at the tables. The tall table at the front is perfect for a couple to look out the window and watch the world go by. The menu is varied, with an extensive choice for breakfast, as well as lunch and dinner options like burgers, subs and sandwiches, tasty appetizers and combination baskets. Plus a kids menu, too. The pies and dinner specials are made by the matriarch of the family, Diane Hibbler, also known as Gram. Newberry News Diner features Amoroso's bread and rolls, Pepsi products and Middleswarth chips, as well as Tastykakes. Newberry News Diner is open seven days a week, and stays open for 48 straight hours every Friday and Saturday. ~ Bob Woodley

State Farm®
 Providing Insurance and Financial Services
 Home Office, Bloomington, Illinois 61710

Ralph Steer, Agent
 1945 West 4th Street
 Williamsport, PA 17701
 Bus: 570-323-2111
 Ralph@ralphsteer.com

P045151 4/04

Sunrise
 REAL ESTATE &
 MANAGEMENT
 SERVICES

570-651-9205 Phone
 570-505-1872 Fax
 136 Catawissa Avenue
 Williamsport, PA 17701

Dawn R. Cohen
 Realtor®
 Broker/Owner

Cell 570-916-6480
 Web sunriserealestate.net
 Email dawn@sunriserealestate.net

NEWBERRY LIONS CLUB

"We serve"

PO Box 4051
 Williamsport, PA 17701

Contact any Lions member to learn more about Newberry Lions or to become a member.

Jim Way, President; Jack Coleman, Secretary; John Confer, Treasurer

Updates from Newberry's Schools

West Branch School

SERVING THE COMMUNITY

West Branch School has a long history of community service. Part of the school's



educational philosophy is the belief in educating the whole child. A student's education involves more than just academics; teachers also help each student to develop socially and emotionally. Part of this effort includes providing real-life, authentic opportunities for students to serve others.

This year, the students at West Branch School are serving their community in many different ways. The Upstairs students (grades 3-6) plan to visit different community service organizations each month. In October, the students served at the Lycoming Animal Protection Society. While there, they helped to clean the facility, change litter boxes, and feed and interact with the animals. In November, the students chose to visit the West End Christian Community Center in Newberry, where they raked leaves on site. They also brought

food donations that the entire school had previously collected. In December, the students visited the local fire department.

The Downstairs students (grades K-2) also practice serving others and participate in outreach opportunities. Twice a month, the students visit the Presbyterian Home in Williamsport to visit with the residents. The yearly kickoff for this service opportunity was in October. New students were able to meet some of the residents, while returning students became reacquainted with the friends they had made from previous years. After engaging in conversation with the residents, the students sang songs, did a fall-themed craft, and enjoyed a snack. During subsequent visits, the students are divided into small groups, with only five students attending at a time. Older students spend their visits reading to the residents, while younger students interact with the residents by making crafts together or engaging in other hands-on activities.

Creating a mindset for community service and developing an awareness of the needs of others is an important part of the learning process at WBS. West Branch School is proud to serve the Williamsport community while also helping students to develop a habit of serving others. For more information about West Branch School, visit www.westbranchschool.org.

~ Submitted by Katie Brass



WBS Students (l. to r.) Bryce Barr and Linah van Emrik helped clean up at Lycoming Animal Protection Society.



A Tradition of Excellence Since 1879

John M. Confer Funeral Director	John E. Springman Funeral Director	Kristen M. Hess Funeral Director
---	--	--

1914 Memorial Avenue Williamsport, PA 17701
Phone: 570-323-7717 Email: KCFH@KnightConfer.com
www.KnightConferFuneralHome.com
Michael R. Ligg, Licensed Supervisor



COMMERCIAL PROPERTY AVAILABLE
NEWBERRY PLAZA - 1,100 SQ FEET, 1969 W 4TH ST
CALL FOR DETAILS
Phone: (570) 323-0799
Email: Theresa.Jbrealty@gmail.com

A Word from the West End Christian Community Center (WECCC)

I turn off the car. Crunching over the hard parking lot, winter's wind steals down my neck. BBRrrrrr! I make it to the Diamond Street door, thankful that Jan has already unlocked it, and is already working in the office. I'm greeted by the warmth from the hissing, clanking radiator. In seconds, walking down our creaky-floored hall, the warm inviting smell of today's lunch cooking in the soup kitchen reaches my olfactory senses. One last shiver as I shake off the cold and hang my coat, ready to greet the day. I'm Thankful.

Many things may be happening at the WECCC this winter. It depends on the day. But thankfully, because of

continuing donations, our Clothes Closet, Soup Kitchen, Foodbank, and the rest of our

16 programs and services can continue to help the community live a little easier from our 901 Diamond St. address. We are grateful.

Come see us this winter. Say "Hi." Shake off the cold, maybe enjoy a hot cup of coffee downstairs. Hopefully, we'll still have some warm winter clothes left on the Clothes Closet floor display. Before you know it, we'll be seeing Robins and Crocuses. Have a safe and warm season. God Bless you all. We are truly blessed. Peace. ~ Submitted by Todd Penman, Executive Director



SANDERS
MORTUARY, LTD.

Refined service. Tasteful surroundings.
Family owned since 1938.

William H. Kieser - Supervisor, F.D.
Michael R. Lingg - Funeral Director
Larry H. & Nancy A. Sanders - Funeral Directors

www.SandersMortuary.com • 821 Diamond St. Williamsport, PA 17701 • 570-322-3466

WEST END COPY CENTER

Inside

Email: masprinting@comcast.net

MAS
Printing

Quality, Dependable Printing
Since 1982

116 Emery Street
Williamsport
570-326-9222

Located Near Williamsport
Industrial Park,
off Reach Road

TYPESETTING & DESIGN SERVICES
FREE PICK-UP & DELIVERY • CONVENIENT PARKING

Digital Full Color and Black & White Copies
8 1/2 x 11 and 11 x 17 Formats

Come in and see us or simply email your files!

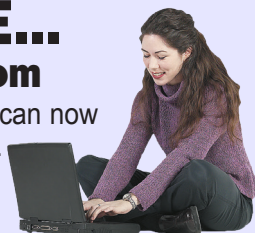
Large selection of paper for your business or home printer

Printers of insideNewberry Newsletter

OUR HOME PAGE...

www.insidenewberry.com

We're on the World Wide Web! You can now find *insideNewberry* on the internet. Read current and past issues of the newsletter.



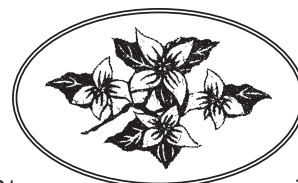
8th Annual Christmas Tree Lighting

ANNUAL CEREMONY CROWD CONTINUES TO GROW

Many were in attendance at the corner of Arch and Third streets for the annual Christmas tree lighting in Newberry. Newberry neighbors lined the sidewalk as Master of Ceremonies Bob Woodley began the program with the students from West Branch School, under the direction of Steve Huslander, sang carols in preparation for the arrival of Mr. and Mrs. Santa Claus. Mayor Gabe Campana chose some from the crowd to help with the official "plugging-in" and the celebration continued in the lobby of the Brodard office. Thanks to Harvest Moon, Smith Radio for the Public Address system, and Sharry Strayer. Plus Tebbs Tree Farm, and Alannah Gabriel for coordinating the event.

NEWBERRY ESTATES

A NATIONALLY RECOGNIZED COMMUNITY OF QUALITY®
Professionally Managed by Community Realty Management, Inc.



2500 Federal Avenue
Suite 357
Williamsport, PA 17701

570-323-8910
Fax 570-323-1918
T.D.D. 1-800-654-5984



Preparation for Winter Riding in Williamsport

When I first moved to Williamsport back in '84, my family and I settled in Newberry. I was in high school, and needed friends to help introduce me to my new community. I soon found them. I quickly recognized, through these new friends and their families, certain characteristics about the folks in Newberry. These people were welcoming, friendly, dedicated and have a strong work ethic. It became evident to me that regardless of situation, that this work ethic and dedication made getting to work a high priority. According to Neighborhood Scout, Newberry workers have less than a 15 minute commute to work. Such short commutes allow for bicycling to be a reasonable option. Not only is it a less expensive option for commuting, but it also provides some exercise, and it's environmentally friendly. However, it is important to keep in mind that a bicycle, like an automobile, requires upkeep and care, especially during the winter months. Therefore, the staff at Bicycle Recycle in Williamsport offers advice for winterizing your bicycle whether you are riding it, or storing it during the winter season.

I often note that I have lived in every 'M' state that borders Canada: Montana, Minnesota, Michigan, Maine. All of these states tend to have colder winters than PA. However, the generally warmer winters in Pennsylvania doesn't necessarily bode better for the cyclist. Colder winters allow for the surfaces of trails to be frozen, which provides a less sloppy surface for the rider. Though the colder temperatures are initially a detriment, the firmer surfaces allow for better traction if tires are prepared properly. This includes studs, zipties, tire pressure, and tire choice. The sloppier road surfaces become problematic in that the surface tends to gunk up the drive train and get all over the frame, which necessitates more maintenance to the bicycle. Another issue with PA winters is the unpredictability of the weather patterns. Preparing both bicycle and rider becomes increasingly difficult with the uncertainty of the weather. Thus, there are a few precautions a cyclist should

consider regarding bicycle maintenance as well as road surfaces.

Most of us in Pennsylvania realize that PA uses various materials for road maintenance which can be problematic to the drive train and frame of bicycles. Something else to consider for winter riding is hidden potholes which can be hazardous for the wheels of the bike and for the rider. Another variable to bike maintenance is the changing temperatures. The fluctuating temperatures and humidity can have a negative effect on bicycle maintenance. Different percentages of moisture in the air should be considered when maintaining a bicycle. Pennsylvania also tends to have varying terrain. The steepness of a road, be the cyclist ascending or descending, might necessitate some thought regarding tire traction and tread patterns – both of which need to be considered with these various gradients and surface conditions.

When speaking of a drive train on a bicycle, I am referring to the the chain, gears and shifters. It is important to keep the drive train properly maintained and clean during the winter months. While it is always a good idea to lube chains with a chain lube such as ProLink or White Lightning, it is more important to keep chains lubed in winter because of increased exposure to various road material and moisture. However, over-lubing a chain can act as an adhesive and should be avoided because it will actually work to attach debris to the surface of the chain, which can increase wear on a chain, causing it to wear away other components such as the cassette and chain rings. Therefore, make sure that the chain is lubed regularly but also make sure that excess lube is wiped off with a rag.

Using cooking spray on the underbelly of frames and cleats of shoes and clipless peddles helps to protect the surface of the frame from road grime and moisture and helps maintain proper contact with shoes and pedals. Also it makes the frame easier to clean. On the peddles, it protects the mechanism of the peddles from moisture

(Continued on Page 7)



Mileto's Sub Shop

"Family Owned & Operated Since 1972"

– We do fundraisers –

**2127 West Fourth Street
Williamsport, PA**

323-0103

Preparation for... *(Continued from Page 6)*

and road salts. This is especially true with double sided peddles, in which one side of the peddle is constantly exposed. The other consideration regarding the frame is protecting steel frames from rust and corrosion. The cooking spray keeps moisture and road debris off of steel frames. It is always a good idea to inspect carbon frames for small cracks that can occur from cinders used to break up ice and help melt snow and slush. Such small cracks tend to lead to larger ones, causing the frame to become dangerous for the rider.

Tire pressure is another seasonal consideration. Typically, summer riding means higher tire pressure, and winter riding means lower tire pressure. The lower pressure helps to increase traction and makes for contact with unseen obstacles such as potholes a little less taxing on the wheels and the rider. Higher pressure for warmer weather helps to decrease friction and makes the bicycle more responsive. When storing a bike, it is recommended that you hang it from its wheels on hooks. Air pressure will seep out of the tubes anyway, and if the bike is hanging, the bike will not be on flattened tires, creating flat spots on the wheels.

Rim surface is another consideration for winter riding. Road debris and grime can build up on rim surfaces making braking less efficient and more dangerous for the rider. To clean the surface, I like to use rubbing alcohol to clean the surfaces of the rims but Simple Green works well and a toothbrush or Scotch Pad also work well, followed by a clean rag to clean off the loosened debris. In order to maintain proper braking surfaces for your bike, you should use a solvent on the rim on bicycles with brake pads and on the surface of the disc on disc brakes. It is amazing the grime that rims pick up, and efficiency of the brakes once they are cleaned.

Tire studs have been used on automobile tires for decades. Studs can be purchased independent of the tire and threaded into older tires, or pre-studded tires can be purchased. However, it is important to keep in mind that studs can penetrate the interior of the tire and puncture tubes, causing flats. Studded tires work rather well but are not always easy to find. An alternative to studs is to use zipties on your tires. Zipties can provide additional traction in snowy and icy conditions and can be easily fastened around tires, but make sure that interference with brake pads is kept to a minimum, which isn't always easy.

Of course with the winter season, our day light exposure tends to shorten. This provides another problem for winter riding. Lights for riding is not only a good idea for the rider to be able to see upcoming

obstacles on the road, it also allows drivers of autos to see the cyclist. I see many folks in Williamsport riding in the dark with no lights. We at Bicycle Recycling hear similar complaints from customers. Riding in the dark without lights is not a good idea for a couple of reasons. First, it is obviously beneficial for the rider to be able to see obstacles such as parked cars, potholes, pedestrians and what not, but I also think that the rider has a certain responsibility to be seen. As the old bumper sticker states, we share the road, and as such, we – as riders – have a responsibility to be seen. Therefore, we should have a front and rear light for riding at night. It is important to keep in mind that it does get darker much earlier in the evening and gets lighter much later.

It is important to keep our bicycles in good riding condition for efficiency and for safety. A bike in disrepair is not a safe machine, especially the braking surfaces. It is also important to remember that we are members of a community here in Williamsport and that we need to keep others safe as well ourselves. When I started here at the Recycling Center, kids would come in and tell me that they don't need brakes because they have shoes. I would try to convince them that likely isn't a good practice and that they should have their brakes repaired. I know, kids will be kids, but they should consider not only their own safety but also how a driver might feel about hitting a cyclist and, thus, proper winterization of bicycles is important. Please feel free to contact us at The Bicycle Recycling Center if you have any questions concerning your bicycles. We are a nonprofit, community oriented operation and want to promote cycling in our town. Please visit us in person or contact us through Facebook. We will be happy to help you with bicycle concerns. We will be providing workshops during the winter season and will help you prepare your bicycles for Spring and Summer riding. We are located in the Pajama Factory at 1307 Park Avenue and our phone number is 570-323-7650. ~ Submitted by Erich Matz

FULL SERVICE USED CAR DEALER
STATE INSPECTION & EMISSION TESTING



Alan L. Feist
Scott A. Feist

1898 West Third Street
Williamsport, PA 17701

Ph: 570-326-1769
Fax: 570-326-1054



NEWBERRY LITTLE LEAGUE 2018 PLAYER REGISTRATION

FRIDAY, JANUARY 5, 2018 – 6:00 pm - 8:00 pm

SATURDAY, JANUARY 6, 2018 – 10:00 am - 1:00 pm

FRIDAY, JANUARY 12, 2018 – 6:00 pm - 8:00 pm

SATURDAY, JANUARY 13, 2018 – 10:00 am - 1:00 pm

Newberry Little League Complex

(corner of Arch St. & Mosser Ave.)

*All children in the Newberry, Linden, Nisbet & Duboistown area
plus any child that attends Jackson Primary, WAMS or WAHS
are eligible to play at Newberry Little League!!*

1 Child - \$45.00

2 Children - \$75.00

3 Children or More - \$85.00

****VISA/MC/DISCOVER ACCEPTED****

****Any child who has NEVER
played at Newberry LL will
have registration fee waived
for 2018 season****



Not sure where your child is eligible to play??
Go to www.littleleague.org/leaguefinder to find out!

Girls and Boys league age 4-14
T-Ball, Minor & Major Baseball,
Minor, Major, & Junior Softball,
plus Boys 50/70 intermediate

**Please bring 3 proofs of
residency (only 1 utility bill)
or school enrollment form signed by
principal plus child's birth certificate**

Follow Newberry Little League on Facebook 

Keep Newberry Beautiful!

SEMI-ANNUAL CLEANUP COMING THIS SPRING

Now that 2018 is here, it is time to mark your calendar for the annual Earth Day Litter Clean Up. Sponsored by the Safe, Clean and Green committee of the Newberry Community Partnership, the Newberry Clean Up will take place **Saturday, April 21, 2018** (Earth Day is April 22). Volunteers meet at the West End Christian Community Center, on the corner of 4th and Diamond Streets, at 9:30am to register. Safety vests, gloves, and bags will be issued to all volunteers. Snacks will be provided prior to and during the event. The clean up ends at noon. At that time, all participants are welcome to enjoy free pizza. K&W Transmission has been so impressed by the volunteer efforts in past clean ups that they generously have contributed financially towards the pizza. Thank you K&W! The clean up is held rain or shine unless the weather is extreme. Please spread the word and help recruit as many volunteers as you can. Everyone is welcome and appreciated.

~ Submitted by Julia Huslander





Shop
www.equinoxltd.com
 for great outdoor gear

EQUINOX
Fundamental Tools for Earth Travelers
 WILLIAMSPORT, PA

NEWBERRY SUB SHOP

"Locally Owned & Operated Since 1980"

2002 Newberry Street • Williamsport
Open Daily 10-9 • Sundays 4-8

570-326-5544

Dawn M. Flexer
Owner**CASH ONLY**

Regular Meetings of Civic & Other Groups in Newberry

These are active groups that welcome new members, call to let them know you'd like to attend. To be listed, please contact the contact Editor, **insideNewberry**, 913 Diamond Street, Newberry, PA 17701 or insideNewberry@yahoo.com.

BOY SCOUT TROOP 14 570-326 5569
 Every Monday • 7:30 pm
 St. John's-Newberry UMC • 2101 Newberry Street
Rob Beiter, Scoutmaster
Open to boys age 11 or older

CUB SCOUT PACK 14..... 570-326-5569
 Every Monday • 7:00 pm • St. John's-Newberry UMC
Open to boys in Grades 1-5 or ages 7-11

ALCOHOLICS ANONYMOUS (AA) ... 570-323-6297
 Alcoholics Anonymous Meets
 Wednesdays & Saturdays at 7:00 PM • WECCC
If attending, use side entrance off gravel parking lot.
The support group welcomes new members.
For additional information, call the WECCC office at the number listed above.

NEWBERRY COMMUNITY PARTNERSHIP 570-651-0634
 3rd Wednesday of the Month • 5:30 pm • WECCC
If you would like to present an idea or have a neighborhood concern, please call or email agabrielnpc@yahoo.com to be placed on agenda.

NCP SAFE, CLEAN & GREEN TEAM..... 570-651-0634
 2nd Tuesday of the Month • 5:30 pm • Kast Hotel
We welcome visitors and new members.

NEWBERRY LIONESSES..... 570-322-8302
 1st Tuesday • 6:30 pm Dinner followed by Meeting
 St. Matthew Lutheran Church • Linn Street

NEWBERRY LIONS 570-326-0259, 570-323-7769
 2nd & 4th Tuesday • 6:30 pm
 Lions Building • Newberry Park

SONS OF ITALY LODGE 138..... 570-326-9222
 2nd Monday • 7:00 pm

WAHS Millionaire Singers Perform at the White House



Thirty-two members of the Williamsport Area High School Millionaire Singers performed at The White House in Washington, D.C. on Saturday, Dec. 2, for holiday tourists.

Under the direction of Kent Weaver and Samuel Robinson, the group sang a medley of holiday tunes for about three hours in the East Wing of the presidential home, the longest performance stretch in the department's nearly two-decade history of attending. While this was the current group's third consecutive year being invited to The White House, Weaver said this year marked the 14th time he's taken students since he started doing so in the 1990s. ~ Submitted by Greg Hayes



**2424 West 4th Street
Williamsport, PA
570-326-4411
TAKE-OUT OR
EAT-IN AVAILABLE
WE CATER!**

*We are a family-owned market specializing in delicious food...
subs, burgers, fried foods, soups, salads and pizza!
We also carry basic grocery items like milk and eggs,
cereal, canned goods and condiments*

We welcome your tax deductible donations to support the continued efforts of the Newberry Community Partnership to bring quality of life improvements and community events to our neighborhood. Send contributions to NCP, 913 Diamond St., Williamsport, PA 17701. For information call 570-651-0634.

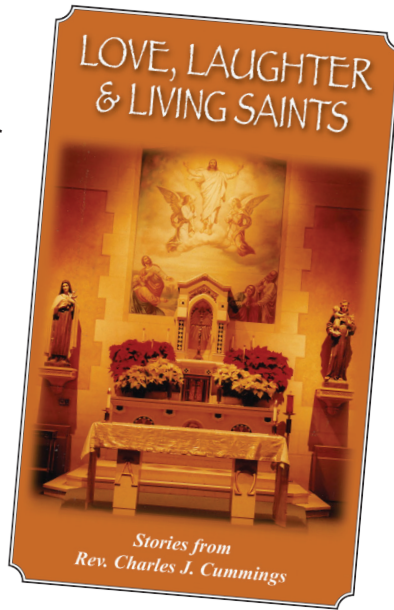
Northcentral PA.com

**LIVE, LOCAL NEWS FOR LYCOMING & SURROUNDING COUNTIES.
FOLLOW US ON FACEBOOK FOR LIVE LOCAL NEWS**

Former Newberry Priest Publishes Vignettes

LOVE, LAUGHTER & LIVING SAINTS by Fr. Charles J. Cummings

After having written innumerable sermons throughout a career spanning decades, Father Charles J. Cummings has compiled a book of short stories. *Love, Laughter & Living Saints* rewards the reader with both insight and wisdom, as well as a few laughs. Gathered from years of family stories, recollections, and the many detours one will find on a trip down memory lane, the book takes us along for the ride to places many of us will find familiar. The book spans decades of life's lessons and ironies, and took several years to complete. Having worked under a deadline while writing homilies for Sunday Mass, Father Cummings found the challenge of writing a book unique. "A thousand excuses appear when it is time to write, and I have used every one of them." says the writer. "What I had to learn was the discipline needed to sit down at the computer or typewriter and begin writing when there is no time or date restraint." Father Cummings wanted to write stories



of inspiration and faith, but did not want to dwell on ridicule or criticism. "It seems to me that there is enough ridicule and criticism written and spoken today to go around."

Father Cummings was born on January 18, 1942 and attended Saint Joseph's School. He was ordained on May 26, 1968 at Saint Peter's Cathedral in Scranton. He served for about ten years at Ascension and Holy Rosary Churches.

"My hope is that these stories will bring a smile to your face, gratitude for God's blessings and inspiration to your life from the simple faith of so many of our brothers and sisters." Father Cummings' *Love, Laughter & Living Saints* is available at Otto's Book Store, It's My Party Store, MAS Printing (116 Emery Street, Williamsport), and St. Joseph the Worker Parish Office (711 West Edwin Street, Williamsport) for only \$10.00 per book. ~ Bob Woodley



570-329-2808

www.newberryexchange.com

NEWBERRY XCHANGE
BUY & SELL

Diamonds • Gold • Televisions • DVDs
Video Games • CDs • Coins and More

846 Diamond Street

Williamsport, PA 17701

The
NEWBERRY

Laundry Basket

CLEAN, CONVENIENT LOCATION
620 Arch Street • Newberry, PA 17701
Open Daily 6:30 AM - 9:30 PM • Off Street Park

Save the Date

Saturday, April 14, 2018



Want to be an Event Sponsor?

Contact the SPCA at 322-4646 or

mlyon@lycomingspca.org

Sponsorships open to individuals and businesses

Thanks & Acknowledgements

Entering my sophomore year as Managing Editor of *insideNewberry*, I would like to bring some attention to the many people and organizations that have made this year a successful and rewarding one for the Newberry Community Partnership and *insideNewberry*. Let's start with some of the people. I know I'll miss a few, and I apologize in advance, but thanks to the Newberry Community Partnership board, including Alannah Gabriel, who is also the Advertising Director of *insideNewberry*, and her sister Vita Manno. Also, Mary Rusinski, who keeps us in line and makes sure we all attend the monthly meetings, Robbie Cross, who spearheads the efforts of the Safe, Clean and Green committee, Judge Christian Frey, who's sage advice helps keep us out of trouble, Carmella Preziosi, our treasurer and conduit to society, and Laura Lambert, who's miracles continue to amaze all of us. Thanks to the distributors of *insideNewberry*. Not only the places where you'll find them, but also the people who get them there, including Margaret and Eric Tupper.

There's also Mike Stahl, who inspired our partnership with the Newberry Little League. We've had two annual events at the Newberry Little League field, and we look forward to working with the Newberry Little League for years to come. Speaking of which, I'd like to thank the bands that have played at our events: Ick.A.Nkki, Leo Wheeland and Kristi, Mum's the Word, and Heath & Indigo. Also a special thanks to Kathy and Rick Fenstermaker of Ground Floor 2.0 for being kind enough to host our indoor flea market. Ground Floor 2.0 is an excellent venue for music and any other kind of event!

Many Newberry businesses are also active in their support of the Newberry Community Partnership and *insideNewberry*. The Newberry Independent Club (Polish Club), Woodlands Bank, Hutchinson, ShopVac, and Cheryl Holt Miller. Also donating to our cause: Kast Hotel (where we sometimes hold meetings), Mileto's, Newberry Subs, Martino's, Subway, TGIF's, Dunkin Donuts, and Helminiak's Nursery. I would also like to thank all of the contributors to *insideNewberry*, without whom I would have little to tell you! And, of course, many thanks to the sponsors of *insideNewberry*, who make this publication possible. The goal of the Newberry Community Partnership is to make Newberry a great place to live. With the help of our individual and business partners, we hope to continue this mission to make the lives of people who live in Newberry better. Have a great new year, and thank you for your support of our organization and our publication. ~
Bob Woodley

UPCOMING EVENTS

JANUARY 2018

MONDAY, JANUARY 1 – New Year's Day

SUNDAY, JANUARY 7 – Orthodox Christmas Day

MONDAY, JANUARY 15 – Martin Luther King Jr. Day

FEBRUARY 2018

FRIDAY, FEBRUARY 2 – Groundhog Day

WEDNESDAY, FEBRUARY 14 – Ash Wednesday

WEDNESDAY, FEBRUARY 14 – Valentine's Day

SATURDAY, FEBRUARY 24 – Lycoming Presbyterian Church Pork & Sauerkraut Dinner

- 4:30 PM to 6:30 PM, 825 Arch Street
- Adults \$9.00, Children (4 Years- 10 Years) \$4.00, Children 3 and Under Free
- Sunday School begins at 9:30 AM
- Worship services begin at 10:45 AM followed by fellowship

MARCH 2018

SUNDAY, MARCH 11 – Daylight Savings Time Starts – Set Clocks Ahead 1 Hour

SATURDAY, MARCH 17 – St. Patrick's Day

SATURDAY, MARCH 24 – LPC Spaghetti Dinner

- 4:30 PM to 6:30 PM, 825 Arch Street
- Adults \$9.00, Children (4 Years- 10 Years) \$4.00, Children 3 and Under Free

SUNDAY, MARCH 25 – Palm Sunday

THURSDAY, MARCH 29 – LPC Maundy Thursday Service, 7:00 PM, Everyone welcome to attend



DIAMOND SQUARE

Market • Deli • Cafe

NEW Hours beginning January 15th, 2018

Monday – Friday 7:00 a.m. – 6:00 p.m.

Saturday – 10:00 a.m. – 3:00 p.m.

Breakfast will be served 7:00 – 10:00 a.m. Monday through Friday

Breakfast will include: Breakfast sandwiches and cinnamon rolls

Breakfast and lunch menu served ALL DAY on Saturday.

AVAILABLE IN THE CAFÉ...

WRAPS, PANINIS, SOUP, SOFT PRETZELS,
PRETZEL DOGS, PIZZA LOGS

SOFT-SERVE ICE CREAM, FRUIT SMOOTHIES, ICED COFFEE,
COFFEE SHAKES, MILKSHAKES

COFFEE, HOT TEA, CAPPUCCINO

2131 West 4th Street – Williamsport
570-567-7322

Hours: Monday - Friday 10:00AM-6:00PM

Saturday – 10:00AM – 3:00PM