

inside Newberry

FREE!

Yesterday...Today...Tomorrow

THE PEOPLE'S PAPER FOR WILLIAMSPORT'S WEST END



insideNewberry

To honor the past...inform the present...envision the future, **insideNewberry** is published quarterly by Newberry Community Partnership (NCP) as a service to the neighborhood to promote community pride and facilitate communication between residents, schools, civic organizations and businesses. NCP is a non-profit community based organization established in 2006. Please support our sponsors who made this issue possible!

- Albright Life
- Best Self Storage
- Dunkin Donuts
- Equinox
- J-Styles Salon
- Knight-Confer Funeral Home
- Lepley, Engleman & Yaw
- MAS Printing
- M&T Bank
- Mileto's Sub Shop
- Newberry Estates
- Newberry Laundry Basket
- Newberry Lions Club
- Newberry Sub Shop
- Newberry Xchange
- Pine Run Productions
- Quality Antiques
- Ralph Steer
State Farm
- Sanders Mortuary
- Tiremasters
- Turner's Market
- Woodlands Bank



insideNewberry
913 Diamond Street
Williamsport, PA 17701
insideNewberry@yahoo.com
www.insidenewberry.com
Phone (570) 601-0298

Alannah Gabriel, **Managing Editor**

Janice Hiller, **Graphic Design**

Rod Chubb, **Web Design**

Your stories and photos are always welcome.

Photos will be returned.



PHOTO COURTESY OF ALAN FEIST

NEWBERRY RAIL YARD – PAST & PRESENT

The Newberry Rail Yard is unique. Not that it is the largest yard between Harrisburg and Buffalo. Not that it once had five railroads serving it. Not that it is currently over 100 acres and packed with rail lines, yet was even larger in the past. Not that it is the centerpiece of a successful public-private partnership that is nearly 30-years old.

What makes the Newberry Yard special is that it is the center of an economic solar system. In this case, the planets orbiting the yard are centers of economic activity, such as manufacturers or rail to truck transload sites. Just in Newberry alone, there are twenty companies around or within the yard. Whenever you see a rail car in Newberry you can make one assumption, there are usually jobs, good ones, at either end of a rail car's transit. Companies like Lonza, Alcan, M. I. Swaco, Transco and all others in a tight Newberry orbit rely on rail service.

The other "economic planets" that feel the gravitational pull of Newberry Yard extend west into Clinton County, specifically South Avis. There you will find long time industrial anchor, Jersey Shore Steel. On its property are over a half-dozen other companies transloading frac sand, pipe and other commodities-most related to the Marcellus gas industries.

Heading east to the more far-flung edge of the railroad system tied to Newberry core are companies at Muncy Industrial Park, such as Charlotte Pipe and Advanced Drainage Systems. Both rely on rail deliveries of plastic. Further east is the Koppers plant located between Muncy and Montgomery. Koppers makes railroad ties and is one of the region's largest rail customers.

While sitting at a grade crossing in Williamsport you may have seen one of Lycoming Valley Railroad's (LVRR) striking green and yellow locomotives. Some tout a large "Bee Line Service" logo. Both the colors and

(Continued on Page 2)

NEWBERRY RAIL YARD *(Continued from Page 1)*

motto are borrowed from one of the predecessor railroads here—the Reading Railroad. On the south side of the Susquehanna you’ve probably seen black and white locomotives. Those belong to Norfolk Southern, which is the major railroad in Pennsylvania and one of two of the largest railroads in the east, the other being CSX.

So how does commercial freight railroading work in and around Newberry? Let’s start with the owner of the railroad real estate. The local tracks on which you see the LVRR trains running are owned by the SEDA-COG Joint Rail Authority (JRA). Lycoming County is one of eight counties that created the JRA in 1983. It was not until 1996, though, that Conrail sold its tracks in the Williamsport area to the JRA. Conrail sold these lines because of declining traffic. The theory was that a locally based railroad ownership and operation could best bring a turnaround; that is exactly what later happened.

The question is often asked is “who owns the railroad in the Newberry”? The JRA owns the real estate; the tracks, bridges and buildings. From its inception the JRA realized the best way to run a railroad is by private enterprise. The LVRR holds an operating contract with the JRA to provide rail service to customers adjacent to the tracks owned by the JRA.

The LVRR must buy locomotives and the crews to man them to service the companies that need rail cars delivered or picked up. They must maintain the tracks to a standard set by the JRA. That standard, by the way, is even more stringent than federal standards. Maintaining a railroad is a full-time job. So in addition to locomotives, the LVRR has to buy specialized equipment and hire crews to work on the track. The final piece of the railroad operator’s responsibility is to market the rail service to expand business. In exchange for the ability to run on tracks owned by the JRA, the LVRR pays the JRA 10% of its gross freight revenue. You could consider that payment as a form of rent.

All funds received by the JRA, minus its operating costs, are put back into the railroad as capital improvements. Some of it might be in the form of direct improvements done by the JRA via a bid process or, perhaps, as a match to one of the state or federal grants the JRA has received over the years. The JRA competes equally with other railroads for these grant dollars. The Commonwealth of Pennsylvania has long recognized that its investments in rail infrastructure pay back in terms of new or retained jobs and support for industrial infrastructure that will serve us well in the future. In fact, 85% of all state grants for rail improvements are awarded to private companies.

Railroads are the ultimate in “green transportation”. You may have seen the ads touting that railroads can move one ton of freight 450 miles on only one gallon of diesel fuel. That is not advertising



hyperbole. Spreading icing on that cake is that, on average, one rail car supplants four trucks. So if you are stuck waiting for a 105-car coal unit train, just image waiting on 400 trucks to go by!

Notwithstanding passenger railroading, U. S. railroads are industrial infrastructure, pure and simple. Looked at over time, though, a rail line serves as a metaphor for changing regional economics.

Turn the clock back to Newberry railroading in the 1800s. The first railroad arrived in 1854, when one of the predecessors of the Pennsylvania Railroad was built in the valley. In 1871 a line that was to become the Reading served Williamsport for the first time. About ten years later came the New York Central. The Erie Railroad (and later the Erie-Lackawanna) found its way into Newberry up to 1976 over tracks owned by the New York Central. Some old-timers may remember the Susquehanna & New York Railroad which went out of business in 1943. It ran from Towanda to near Ralston and came into Newberry via an agreement over the Pennsylvania Railroad. To this day, there is a track in the Newberry Yard off Trenton Avenue and is referred to by railroad employees, as the “Sunny” (S&NY) which at one time was reserved for its trains.

In the early days of railroading, the lines in Newberry hauled commodities for the timber industry, tanneries, grain mills and others. Over time, area industries waxed and waned, both in volumes and type. The one constant was that there were rail lines in Newberry and spokes heading out. Of course, not all routes survived. The Pine Creek Rail Trail was once a New York Central line to Corning, NY. The lines that had business on them in the 1970s and 80s, fortunately, survived and are doing better today than they have in decades.

Newberry and its railroads serve industries that exist and will serve those that will be here in the future. Since 1996, the JRA and its operating partner, the LVRR have greatly improved and expanded the railroad infrastructure in Lycoming County and elsewhere in central PA. These investments, coupled with excellent customer service, allows the Williamsport area to compete for new industry and, most importantly, the good jobs that come with that development.

OUR READERS WRITE...

To the Newberry Community Partnership:

I am pleased to write about my father William Henry Mosteller, who fought in France during World War 1. He had a love for his country and our flag.

During the 1950's, I don't have the exact year, the Light of Liberty was quite tarnished. He was told it would need sandblasting at a cost of \$50.00. He talked with business owners and came up with the donation. Also around that time, my dad lowered the flag at the monument each day before dark and raised it the next morning. He and my mother Mable went to Florida for a month. While they were gone, Merrill E. Leidhecker, Sr. did the honor for him. Merrill was a scoutmaster at St. Matthews Lutheran Church and taught the scouts the proper way to handle, fly, fold and dispose of a worn out flag.

My dad was raised on Webb Street and after the war worked on the Reading Railroad as office clerk in Philadelphia. There he met my mother and later came back to Webb Street in Newberry.

In 1945, while my sister Elaine and were in the service, they moved to Funston Avenue.

Through the years he was employed at many places. One was a Grand Union grocery store on Franklin Street, what is now Eck's Market. He rode the trolley to get there. He also worked at Sweet Steel on Arch Street, Lycoming Avco, and the Glue Plant on Trenton Avenue, what is now Lonza. He managed another Grand Union at the north-east corner of W. Fourth and Poplar Street, which later became a barber shop. He also was a ticket taker at Bowman Field for the Gray's baseball team.

It's nice writing about my dad. He was an honest man who loved the Lord and never owned a car. He rode his bike or took a bus to work.

My pleasure,

Richard Mosteller

EDITOR'S NOTE: In the July 2012 issue of *insideNewberry* we announced the community was planning a celebration for our landmark monument but no date had been set a press time. We asked readers to contact us if they were related to anyone on the memorial. Many responded with stories and recollections via emails and phone calls. Richard wrote us this letter. The event took place on September 23rd. We will relay the story of the monument's rededication and celebration in the January issue.

CRUISE ON THE HIAWATHA WITH "FLIPSIDE" WINNERS

Five lucky people won the opportunity to invite friends to join them on a Hiawatha two hour cruise with the Flipside Band on Saturday, September 15th. They are: Cathy Akers, George Conaway, Kim Gough, Krista Rogers and Jerry Walls.

The 24" mountain bike, donated by Hutchinson Realty Developers, LLC, was won by Deb Mazurek; Connie Farr will be receiving compliments when she wears her amethyst necklace and earrings set.

The drawing of the Newberry Community Partnership Raffle took place on board the Hiawatha public cruise on Sunday, August 26, 2012.

The NCP would like to thank everyone who bought a ticket. We couldn't have done it without Laura "Dolli" Lambert, who put it all together; Camille & Michael at MAS Printing and Tiremasters and Le Chocolat for willing to be outlets for ticket sales.

State Farm®
Providing Insurance and Financial Services
Home Office, Bloomington, Illinois 61710



Ralph Steer, Agent
1945 West 4th Street
Williamsport, PA 17701
Bus: 570-323-2111
Ralph@ralphsteer.com
P045151 4/04



The
NEWBERRY

Laundry Basket

CLEAN, CONVENIENT LOCATION
620 Arch Street • Newberry, PA 17701
Open Daily 6:30 AM - 9:30 PM • Off Street Park

**BEST SELF
STORAGE**

*BEST Location...
BEST Price!*

• Traditional &
Climate Controlled
Units

• Fenced & Gate Access

www.bestselfstorage.net

10% Discount on
a Year's Lease
★★★★★
or a AAA Discount

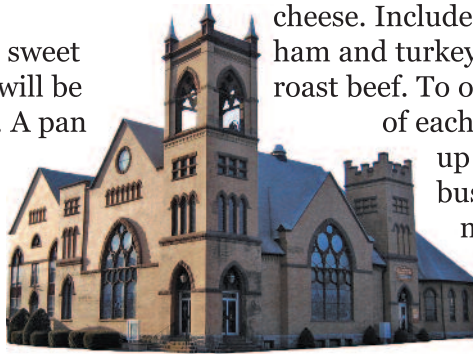
Williamsport • 2887 South Reach Road • 323-7300

Lock Haven • 115 Washington St. • 748-7778

WEST END CHRISTIAN COMMUNITY CENTER NEWS

Apple Dumplings

Fall is in the air and that means the sweet aroma of fresh baked apple dumplings will be filling the air at the Community Center. A pan of 4 large delicious dumplings will sell for \$7.50 and must be pre-ordered. Call 323-6297 and place your order today! Dumplings will be made on October 27th and must be picked up between Noon and 5 PM that day. Don't let this opportunity slip by - apples will be in short supply this year!



cheese. Includes a packet of mustard and mayo. The ham and turkey sandwiches are \$3.50 and \$3.75 for roast beef. To order, call the office by the first Monday of each month. Your sandwich may be picked up the following Thursday. If you have a business and order 10 sandwiches or more, we will deliver if your business is in the Williamsport area. Please call 323-6297 for info or to place an order. All sandwiches are made by the Jiffy Market in Jersey Shore.

Accessibility Ramp

We are ready to begin our "main door entry makeover". The Center will begin the construction of a beautiful, new accessibility ramp. This ramp will make entering our facility much easier and safer for those with disabilities. When construction begins, visitors will be asked to use the Fourth Street entrance or the north side entrance (our current accessibility ramp) off the gravel parking lot. It may be inconvenient for a few weeks, but it will be worth the wait.

Hearing Loss Association of Lycoming County

The WECCC wishes to welcome the Hearing Loss Association of Lycoming County to our Center. Their mission is to enhance the lives of hearing loss individuals through open communication. This Chapter will advocate for those with hearing loss and provide support and educational resources, in order to better inform those dealing with hearing loss. Join them the second Thursday of the each month from 7 to 9 PM. Please use side entrance off gravel parking lot to enter the building. For more info contact Kay Tyberg, President at 570-497-4559 (Video Relay System -VRS) or e-mail her at Tybergkay7376@yahoo.com.

Clothes Closet – Thrift Shop

The crisp fall days are here and our Clothes Closet is stocked with an abundance of jackets, sweaters, sweatshirts, skirts, slacks, etc. and all the accessories to complete an outfit. Our Thrift Shop is ready for the season as well. There you will find autumn and holiday decorations as well as household items and toys. Open Monday & Thursday 9:00 AM to 2:00 PM, Tuesday & Wednesday 9:00 AM to Noon; Wednesday afternoon 4:30 PM to 7:00 PM; Saturday 8:30 AM – Noon. Closed Friday.

Sandwich Sale

As an ongoing fundraiser, our Center is now selling individually wrapped large (5" bun) ham, turkey, or roast beef sandwiches with a slice of white American

Christmas Tree Sale

Once again the Center will be selling Christmas trees as a fundraiser to help our Newberry community. Freshly cut trees will go on sale the afternoon of Saturday, December 1st and December 2nd. Trees will be available for sale during regular office hours, too. The sale continues until all the trees are sold. Tree heights range from 4' to 6' and prices are \$20 and up. Come early for the best selection. Exact sale times were not available in time for publication. Please call 323-6297 for details. While pondering your selection of your perfect tree, you can enjoy grilled hot dogs and beverages from our concession. Nothing says Merry Christmas like a freshly cut tree!

We sincerely appreciate all your support for the work we do at the West End Christian Community Center. May God's grace be with you!!

~ Submitted by Marge Thompson, Director

NEWBERRY SUB SHOP

"Locally Owned & Operated Since 1980"

2002 Newberry Street • Williamsport

Open Daily 10-9 • Sundays 4-8

570-326-5544

Sherry W. Strayer
Owner

Dawn M. Flexer
Manager

KNIGHT-CONFER FUNERAL HOME, INC.

John M. Confer
Supervisor/Owner

John E. Springman
Funeral Director

323-7717

1914 Memorial Avenue • Williamsport, PA 17701

www.knightconferfuneralhome.com

"Locally Owned & Operated Since 1879"

INSIDE OUR SCHOOLS...Reports from Newberry's Schools

Jackson Elementary School

The Eagles Are Soaring!

Jackson Elementary School is off to a great beginning. Our students are challenged each day in the classroom by our teaching staff. Assessment data is used to plan for instruction. We can see what their needs are and we work toward that goal together. Parents are regularly informed of progress.



Jackson students hear each day the school expectations:

Be Present - come to school each day on time.

Be Responsible - do your job, be prepared.

Be Respectful - follow directions the first time.

Be Safe - keep hands, feet and objects to yourself.

The Open House on August 23rd was packed. Teachers presented information during two sessions about classroom expectations and their grade level programs. Also at our Kindergarten Open House, nearly 80% of our families showed up to learn from our kindergarten teachers, ways to support learning at home.

Jackson Elementary depends on the connection to the students' homes and families for a successful year. Families may join the P.T.O. They may participate in school events. Jackson Elementary School is planning a fundraiser beginning on Oct. 19th to help support the activities, events, trips and treats for our students. Watch for the information coming home soon. Jackson students are off to a Soaring start!

~ Submitted by John J. Killian, Principal

West Branch School

Monarch Watch

Each fall West Branch School (WBS) students participate in the Monarch Watch program, a citizen scientist project based at the University of Kansas. WBS students raise monarch butterflies from the caterpillar (larva) stage of metamorphosis through the chrysalis (pupa) stage to the adult butterfly stage. Upon the emergence of the butterflies, students tag and release the butterflies. Each year, the fifth generation of monarch butterflies east of the Mississippi migrates to a particular valley in Mexico where they overwinter. Prior to the release, students record data that will be sent to the University.



Among the data recorded by the students upon the release of the butterflies are the gender (which the students identify), the date of release, and the location of release. This information is used by the lepidopterists at the University of Kansas to learn more about monarch butterfly behavior, migration patterns, annual population census, and effects of weather and climate on the population.

"What I find so valuable about this program," says Stacie Lakatos, a WBS teacher, who brought the program to the school 11 years ago, "is that the students are doing REAL science. They are not reading about it in a book, or watching a video about it, they are DOING it. They are true scientists, observing, collecting data, and recording data that scientists will use. This is real science. As the scientists learn more, students see that their work has contributed to that learning and greater understanding of monarchs. Nothing can take the place of discovery, inquiry, and the application of the scientific process."

Children at all age levels can learn through this program, according to Lakatos. Students at WBS range in grades from Kindergarten through 6th, and the Monarch Watch program is appropriate for all of them. "Our youngest students learn about the mystery of metamorphosis, and each year their understanding increases. The older students learn more about the anatomy and physiology of the monarchs, their migration patterns and behaviors. We employ the broad concepts of monarchs and metamorphosis across the curriculum. We integrate these ideas into our reading, writing, math, music, art, and geography. The possibilities are endless. The magic of monarchs and their metamorphosis never ceases to amaze."

Brodart's Big Book and DVD Sale!

**BRO
DART**

Sat. Oct 20th, 8a.m.-1p.m.

Warehouse entrance off 3rd St.

www.tartanbooks.com

If you've missed an issue of *insideNewberry*, back issues are available. Send your request with a small donation to cover cost of mailing to *insideNewberry* 913 Diamond Street, Williamsport, PA 17701.

WELCOME NEIGHBOR! 4-10 MOTORCYCLE COMPANY LLC

New in Newberry this fall is **4-10 Motorcycle Company, LLC**. The hardcore bike shop, located in the old Engine No. 5 building at 2020 Federal Avenue, will cater to bikers who are looking to get away from the look of a stock bike without breaking the bank.

“We provide our customers with the opportunity to stylize their bikes by focusing on the bike’s innate beauty and power,” says 4-10’s owner/operator Luke Fortin. “We focus on the essentials of functionality, craftsmanship, and style which are the fundamental elements of hardcore/bare-bones bikes.”

Luke Fortin is a Williamsport native with family roots in the Newberry and greater Williamsport area. He graduated from Williamsport High School in 1997. He spent twelve years in the military and has lived and worked throughout the USA and beyond. Luke returned to Williamsport and followed his dream of establishing a bike shop to create bikes and custom parts for the no-nonsense biker.

“At **4-10 Motorcycle Company**, we build stripped down, fast, strong, and reliable bikes that most can afford. When you combine all those ingredients, the bikes look VERY cool. We make as many parts in-house as our equipment will allow including handlebars, side-mount tail lights, exhaust systems, home-builder parts, and can get about any



Luke Fortin, owner of the 4-10 Motorcycle Company LLC

part a customer wants. We are somewhat of a Sportster specialist; however, we can hook up your big twin, triumph, or metric cruiser as well.”

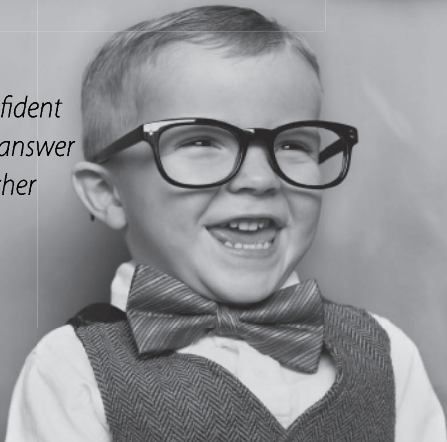
“We were very fortunate to find this awesome historic building that suits our retro, no-nonsense style.” After giving Engine No. 5 a facelift and installing necessary equipment and machinery, Luke extends a thank you to his family, Engine No. 5’s owner, city officials, supporting businesses, Newberry residents, and all others who have been a part of the opening of 4-10.

Stop by the shop or call us at **570-567-7214**. Visit our website at **www.4-10motorcycleco.com**.

Where does Newberry End and Jaysburg Begin?

You Need to Be Local to Know that Stuff!

Little Stevie was confident he would know the answer even before the teacher asked the question!

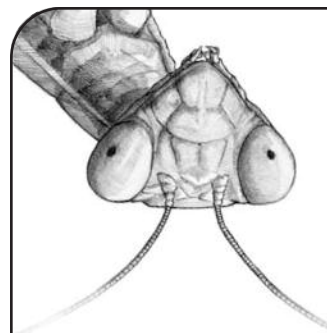


WOODLANDS BANK

We're Easy to Do Business With

Member
FDIC

www.woodlandsbank.com



Shop
www.equinoxltd.com
for great outdoor
gear

EQUINOX

Fundamental Tools for Earth Travelers

WILLIAMSPORT, PA



Head Start teachers at in-service training



Children in Linn Street Classroom reading



STEP Head Start Prepares for 2012 School Year

On August 27, 2012, STEP Head Start Staff met at St. John's-Newberry United Methodist Church in Newberry to prepare for another school year. Over 122 staff attended the daylong event. STEP Head Start has 44 home-based and center-based classrooms serving children from 8 weeks old to kindergarten age in the bi-county region. Twenty classes are located in Newberry: six classes at Linn Street, twelve classes at Reach Road, and two preschool classrooms at St. John's-Newberry United Methodist Church. The 20 classes serve 291 children.

We welcome your tax deductible donations to support the continued efforts of the Newberry Community Partnership to bring quality of life improvements and community events to our neighborhood. Send contributions to NCP, 913 Diamond Street, Williamsport, PA 17701. For information call 570-601-0298

REGULAR MEETINGS OF CIVIC & OTHER GROUPS IN NEWBERRY

These active groups welcome new members, just call to let them know you'd like to attend. To be listed, contact Editor, *insideNewberry*, 913 Diamond Street, Newberry, PA 17701 or insideNewberry@yahoo.com.

BOY SCOUT TROOP 14.....326-5569

Every Monday • 7:30 PM
St. John's-Newberry UMC • 2101 Newberry Street
Rob Beiter, Scoutmaster
Open to boys age 11 or older

CUB SCOUT PACK 14326-5569

Every Wednesday • 7:00 PM
St. John's-Newberry UMC • 2101 Newberry Street
Open to boys in Grades 1-5 or ages 7-11

NARCOTICS ANONYMOUS (NA) & ALCOHOLICS ANONYMOUS (AA)323-6297

Narcotics Anonymous Meets
Sundays Noon-2 PM • WECCC

Alcoholics Anonymous Meets
Wednesdays & Saturdays at 7:00 PM • WECCC
If attending, use side entrance off gravel parking lot.
These support groups welcome new members.
For additional information, call the WECCC office at the number listed above

NEWBERRY COMMUNITY PARTNERSHIP601-0298

2nd Thursday of the Month
6:00 PM • WECCC

If you would like to present an idea or have a neighborhood concern, please call to be placed on the agenda.

NEWBERRY LIONESS.....322-8302

1st Tuesday • 6:30 PM Dinner followed by Meeting
St. Matthew Lutheran Church • Linn Street

NEWBERRY LIONS326-0259, 323-9756, 323-9825

2nd & 4th Tuesday • 6:30 PM
Lions Building • Newberry Park

NEWBERRY SENIOR CITIZENS ...323-5700 or 326-5569

2nd Monday in November & December • Noon
Fellowship Hall • St. John's-Newberry UMC

*For people of any age who would like to attend. Dinner, entertainment, fellowship and fun is had by all. Cost is just \$5.00 – Your first visit is FREE!
Call Skip Hunsinger at 323-5700 or the Church Office at 326-5569*

ORIGINAL SONS OF ITALY – LODGE 138326-9222

2nd Monday • 7:00 PM

★ ★ ★ **SPECIAL VOTER SECTION** ★ ★ ★

2012 GENERAL ELECTION • Tuesday, November 6

The NCP and *insideNewberry* does not endorse any political party or candidate.

- Consider VOTING IN OFF-PEAK times. Busy hours at the voting precincts are before 9:00 am and after 4:00 pm.
- If you have to wait, review info posted at polling place, as well as voting machine instructions and sample ballots.
- Residents are reminded they will be required to show an acceptable Photo ID, one with an expiration date that is current, to be eligible to vote.

Acceptable Forms of Photo ID

All Photo IDs must be current and contain an expiration date, unless noted otherwise. All Photo IDs must contain the name of the voter and the name must “substantially conform” to the name on the poll books.

1. Photo IDs issued by the U.S. Federal Government or the Commonwealth of Pennsylvania including the PA Department of State ID for Voting Purposes
2. Pennsylvania driver’s license or non-driver’s license photo ID (valid for voting 12 months past expiration)
3. Valid U.S. passport (not expired)
4. U.S. military ID - active duty and retired military (must designate an expiration date or designate that the expiration date is indefinite). Military dependents’ ID must contain an expiration date
5. Employee photo ID issued by Federal, PA, County or Municipal government (not expired)
6. Photo ID cards from an accredited public or private PA college or university (not expired)
7. Photo ID cards issued by a PA care facility, including long-term care facilities, assisted living residences or personal care homes (not expired)

Acceptable Forms of Non-Photo ID

A voter with a religious objection to being photographed may present a “valid without-Photo” driver’s license of ID card issued by the PA Department of Transportation.

“Name on ID must Substantially Conform”

Voter Services office has been receiving many calls about the new Voter ID Law. One of the most frequently asked question is:

“Does the name on the Photo ID have to match exactly to the name in the poll book?”

NEWBERRY POLL LOCATIONS

6th & 7th Wards
 St. Matthews Lutheran Church • 2233 Linn Street
 Political signs on premises
 ONLY at Linn and Pearl Street curbsides

8th Ward
 Lycoming Presbyterian Church Fellowship Hall
 825 Arch Street • Funston Avenue Entrance

No, The name on the Photo ID must “substantially conform” to the name on the poll book. Poll workers, in consultation with the county board of elections, may use the same level of discretion and sound judgment as they used in enforcing the “first-time voter” identification requirements previously required. People often use nicknames, middle names and initials as a substitute for their given name. For example, a voter whose name is Joseph Earl Voter or Margaret Smith Voter may have a Photo ID that contains any one of the following:

Joseph E. Voter	Joe Earl Voter	Joseph Voter
Joe E. Voter	J. Earl Voter	J. Voter
J. E. Voter	Earl Voter	
Margaret Smith Voter	Margaret Smith*	Maggy S. Voter
M. S. Voter	Maggy Voter	M. Smith Voter
Peg S. Voter	M. Voter	

*In this example a voter who recently changed her name by reason of marriage presents a valid Pennsylvania driver’s license or Pennsylvania ID card accompanied by a PennDOT update card, which is sufficient to satisfy the requirements of the Voter ID law regarding proof of identification.

Provisional Ballot

Without an acceptable form of Photo ID at the polling place, the voters are given the opportunity to vote by provisional ballot. For the provisional ballot to count, the voter must, within 6 days after the election day, provide the Lycoming County Board of Elections with a copy of an acceptable form of Photo ID via mail, electronically (email, fax, etc.) or in person and an affirmation that voter is the same person who cast the provisional ballot. The County Board of Elections will distribute copies of this form to the polling places.

Deadlines

- **Tuesday, October 9, 2012** - Last day to register or make changes to your registration before the election.
- **Tuesday, October 30, 2012** – last day to apply for a civilian absentee ballot before the election.

If you need a voter registration application or an absentee ballot application you can:

- **Download an application** on the Lycoming County website www.lyco.org and click on “Voter Services”
- **Stop in Voter Services** at 330 Pine Street, Executive Plaza, 1st Floor, Room 101, Williamsport, PA 17701
- **Call Voter Services** at 327-2267

Sample ballots will be available in the Voter Services office or on the website www.lyco.org starting Monday, October 22, 2012.

VOTE DEMOCRAT



NEWBERRY!
SUPPORT YOUR
DEMOCRATIC CANDIDATES!
VOTE ON NOVEMBER 6!

- ★ Barack Obama for President ★
- ★ Bob Casey for U.S. Senator ★
- ★ Philip Scollo for U.S. Representative ★
- ★ Rick Mirabito for State Representative ★
- ★ Kathleen Kane for Attorney General ★
- ★ Eugene DePasquale for Auditor General ★
- ★ Robert McCord for Treasurer ★

PAID FOR BY THE LYCOMING COUNTY DEMOCRATIC COMMITTEE

Support your
Republican
Candidates



NATIONAL

President <input checked="" type="radio"/> Mitt Romney	Vice President <input checked="" type="radio"/> Paul Ryan
U.S. Senator <input checked="" type="radio"/> Tom Smith	U.S. Congressman (PA 10 th Congressional District) (Incumbent) <input checked="" type="radio"/> Tom Marino

STATE

PA State Attorney General <input checked="" type="radio"/> Dave Freed	PA State Treasurer <input checked="" type="radio"/> Diana Irely Vaughan
PA State Senator (23 rd Senatorial District) (Incumbent) <input checked="" type="radio"/> Gene Yaw	State Representative (84 th Legislative District) (Incumbent) <input checked="" type="radio"/> Garth Everett
PA State Auditor General <input checked="" type="radio"/> John Maher	State Representative (83 rd Legislative District) <input checked="" type="radio"/> Harry Rogers

 Paid for by the Lycoming County Republican Committee
 Robert C. Brobson; Chairman 

ON NOVEMBER 6th—VOTE



Harry Rogers
 For State Representative

PAID FOR BY COMMITTEE TO ELECT HARRY ROGERS

Committee to elect Harry Rogers 570-360-3469
 PO Box 3601, Williamsport, PA 17701 www.harryrogers2012.com
 hjrfor83rd@comcast.net Facebook—HarryRogers2012

LUANA CLEVELAND

★ PA SENATE 23 ★


She will listen to you.

Citizens for Cleveland Jane Hoover Treasurer



Representative Rick Mirabito
Your Citizen Legislator
Fighting for Rural PA

★ ★ ★ ★ ★ ★ ★ ★



Invested
 in our
Community

- Business Owner
- Committed to Excellence in Our Community
- Represents all of us---Republicans, Democrats and Independents

Paid for by the Committee to Elect Rick Mirabito. Shirley Abernathy, Treasurer.



WILLIAMSPORT BUREAU OF FIRE

PREVENTION • EDUCATION • INVESTIGATION

Imagine it is 2:30 in the morning on a cold January night. You're covered-up in bed all toasty and warm. You're in a deep sleep, dreaming of a siren approaching you, when you suddenly wake-up coughing and hacking. You realize the room is filled with thick, acrid smoke and you can hear snapping and cracking that reminds you of a camp fire... "FIRE? FIRE! THE HOUSE IS ON FIRE!"

You crawl out of bed, toward your open bedroom door, but the smoke and heat make it almost impossible to get to the door and close it. The feeling of passing-out is overwhelming as you head toward the window. But you find the window blocked by your dresser. You look toward the other window, but can't see it because of the smoke and the boxes of clothing you were planning on taking to the Rescue Workers or Salvation Army tomorrow are blocking it. You close your eyes as you lay on the floor, wishing you didn't have to die like this.

Now you wake-up for real... wide awake... heart pounding in your chest... overcome with terror... "It was a bad dream! I'm alive! It wasn't real! Thank you, God!" Not being able to fall back to sleep, you begin to write down the events from your nightmare.

The next morning, you call the fire department to have the Fire Inspector come over and discuss ways in which you can avoid having your bad dream become a reality.

The VERY FIRST thing he would point-out would be the lack of WORKING smoke detectors. One should be installed on each level of your home and one in each "sleeping area" (bedroom). They are not required, but ARE RECOMMENDED in unfinished attics. So, for a "normal" Williamsport home (three bedroom, two-story), six detectors are required and one is optional in the attic. The next detail the Inspector would tell you is that you should sleep with your bedroom door closed. This prevents excessive heat and smoke from filling the room. With respect to this example, an additional point the Inspector would make is to explain why blocking windows is not the smart thing to do. Windows are your second way out!

October is Fire Prevention Month. The Williamsport Bureau of Fire and the National Fire Protection Association (NFPA) urge you to practice your escape plan. "Have 2 Ways Out" is the theme for this year. You know you need to keep a clear path to the exit door, but you also need to maintain easy access to your windows.

If you have any questions or comments, or would like to arrange a Home Fire Safety Survey to be performed by the Williamsport Bureau of Fire, please call Assistant Chief Todd Heckman at 329-3820 or Fire Inspector Sam Aungst at 329-3821.

HAVE 2 WAYS OUT!



Est. 1972 Arlene Ardrey
Manager


Mileto's Sub Shop

"We are family and big on people"


TUESDAYS – SENIOR DAY (55 plus)
20% OFF TOTAL PURCHASE


– We do all fundraisers –

2127 West Fourth Street
Williamsport, PA


323-0103

M&T Bank.
Understanding
what's important.

 **M&T Bank**

 www.mtb.com © 2007 M&T Bank. Member FDIC.

NEWBERRY ESTATES

A NATIONALLY RECOGNIZED COMMUNITY OF QUALITY®
Professionally Managed by Community Realty Management, Inc.



2500 Federal Avenue
Suite 357
Williamsport, PA 17701

570-323-8910
Fax 570-323-1918
T.D.D. 1-800-654-5984

SEE WHAT'S HAPPENING AT ALBRIGHT LIFE



Country Willie during his performance at Albright LIFE

Country Willie Visit Albright Life

Bill Lynn, also known as “Country Willie” from the Bloomsburg area, recently visited Albright LIFE (Living Independently For Elders) staff and participants at the LIFE Center in Williamsport. He played the guitar while singing a variety of music, his specialty being Country. The participants joined in singing and clapping their hands to the tunes he performed.

Located at 901 Memorial Avenue, Williamsport, Albright LIFE (Living Independently for Elders) is Pennsylvania’s version of the nationally recognized PACE program (Program for All-Inclusive Care for the Elderly). LIFE’s comprehensive array of services meet the social, medical, emotional, spiritual and nutritional needs of individuals 55 and older. This mix of services allows participants to remain healthy and active in the place they call home for as long as possible. In

addition, LIFE services are a blessing for both participants and their families and caregivers, who appreciate the support and benefits the program provides. To learn more about Albright LIFE, call (570) 322-5433 or visit AlbrightLIFE.org.

Square Dancing with a Twist

Albright LIFE participants and staff enjoyed a different version of Square Dancing; “Wheel Chair Square Dancing.” All of the participants sat in wheel chairs and enjoyed being promenaded by the staff. The activities coordinator Sue Berta, was the “caller” at the square dance and was responsible for calling out the instructions to the dancers. These instructions give directions to those assisting the participants as to what moves they are to perform.


ALBRIGHT LIFE[®]
Living Independently For Elders
A MINISTRY OF ALBRIGHT CARE SERVICES
Called to Serve Seniors
322-5433 | AlbrightLIFE.org
901 Memorial Avenue | Williamsport

Pictured below, from upper left, LIFE participant Hilda Garverick is being assisted by certified occupational therapist assistant Laurie Mundrick, (front left center) Adult Day Care participant Beverly Bauder is being assisted by volunteer Kathy D’Orazio and (back middle) LIFE participant Delores Heath is assisted by CNA Tracy Applegate during “Wheel Chair Square Dancing.”



NEWBERRY LITTLE LEAGUE 9-10 YEAR OLDS WIN 2012 DISTRICT CHAMPIONSHIP



Front row (L to R): Stone Heller, Colin Holt, Logan Burkett, Dakota Hill, Dominick Harding. Middle row: Naiman Amos, Andrew McCann, Jacob Clements, Derek Gehr, Cole Brewer, Rashad Brown. Back row: Dave hill, John Gehr, Dan Clements, Spurgeon Burkett.

Lifelong Williamsport native & Newberry resident

Christian D. Frey

Estates • Wills • Power of Attorney
Boundary Disputes • Contract Law

Lepley, Engelman & Yaw
ATTORNEYS - AT - LAW LLC

Call 323-3768

140 East Third Street • Williamsport • www.lepleylaw.com



Jstyles salon

FULL SERVICE SALON

1969 West Fourth Street • Williamsport, PA 17701

Dunkin Donuts Plaza in Newberry

570.567.7086

Walk-Ins Welcome • Open 7 Days Per Week!

NEWBERRY LITTLE LEAGUE 11-12 YEAR OLDS WIN 2012 DISTRICT CHAMPIONSHIP



Front row (L to R): Draig Ruff, Hunter Corbin, Riley Hilner, Kyle Caringi, Tyler Askey, Nathan Welch. Back row: Coach Bob Massic, Coach Barry Garverick, Torren Potts, Ben Garverick, Damon Clark, Cody Shimp, Ethen Stryker, Brandon Loner, Manager Lester Loner, Coach Tory Shimp.

Tiremasters
inc.

675 Arch St.
Newberry

322-8473

**Quality
Antiques**

3022 West 4th Street
Williamsport, PA 17701

Joanne Conklin
Owner
(570) 322-3022

Hours:
Wed. - Sat.
10:00 - 5:00

(570) 329-2808 www.newberryexchange.com

NEWBERRY XCHANGE
BUY & SELL

Diamonds • Gold • Televisions • DVDs
Video Games • CDs • Coins and More

846 Diamond Street Williamsport, PA 17701

**SANDERS
MORTUARY, LTD.**

Refined service. Tasteful surroundings.
Family owned since 1938.

William H. Kieser – Supervisor, F.D.
Michael R. Lingg – Funeral Director
Larry H. & Nancy A. Sanders – Funeral Directors

www.SandersMortuary.com • 821 Diamond St. Williamsport, PA 17701 • 322-3466



2012 Holiday Happenings

Home for the Holiday Weekends Dates-to-Remember

MAYOR'S ANNUAL TREE LIGHTING CEREMONY

- **Friday, November 16, 2012**
- **5:30 p.m.**
- **Santa Village** – Corner of West Fourth and Hepburn Streets

ANNUAL CHRISTMAS PARADE

- **Friday, November 16, 2012**
- **6:00 p.m. Kickoff**
- Start location: West Third and Elmira Street
- Finish Location: West Fourth and Elmira Streets
- Entry application deadline: October 31, 2012

VISIT WITH SANTA

- **Friday after the parade on November 16**
- **Every Saturday from November 17 until December 22 from 2:00 – 4:00 p.m.**
- **Santa Village** – Corner of Hepburn and West Fourth Streets
- Bring your camera!

ANNUAL FESTIVAL OF LIGHTS

- **Sunday, November 18**
- **5:30 p.m.**
- **Brandon Park**
- Lighting ceremony, writing contest, dancers, horse drawn wagon rides and food concession
- Visit from Santa

14th ANNUAL WILLIAMSPORT'S VICTORIAN CHRISTMAS

- **Saturday, November 17** – One Day Only!
- Theme – It Starts With a Story
- Tour of Museums, Homes, and Churches
- Tickets – \$15.00 per person; children and students- free. Purchase in advance at Lycoming County Visitors Bureau, Community Arts Center and the Historic Genetti Hotel
- Day of Tour: Visit Mansions, Historic Genetti Hotel, Lycoming County Visitors Bureau and Transportation Museum
- Contact: Yvonne Di Rocco 570-772-5671 or Nan Young 570-419-4915 for information

CHRISTMAS TREE SALE

- **West End Christian Community Center** – Corner of West 4th & Diamond Streets
- See page 4 for details

CHRISTMAS EVE CANDLELIGHT SERVICE

- **December 24, 2012**
- **7:30 PM**
- **Lycoming Presbyterian Church**

SANTA & MRS. CLAUS COMING TO NEWBERRY/JAYSBURG

- Santa & Mrs. Claus will be joining us for our annual tree lighting and visit with the children.
- Date and time to be announced

12 Days of Christmas

Saint John's-Newberry Church is planning their Annual 12 Days of Christmas (a wonderful crafts and food sale formally known as Christmas Village) on November 17th. Join us in the recreational room of Saint John's-Newberry Church, Newberry Street for holiday shopping. Lunch available.

Holiday

Gift Ideas

NEWBERRY LIONS HOLIDAY FRUIT BASKET FUNDRAISER

The Newberry Lions are taking orders for their popular holiday fresh fruit and goodie gift baskets. Baskets will be ready for pick up at the Newberry Park Fairgrounds Lions Building, Friday, December 21st and Saturday the 22nd. Don't wait till the last minute... Call 570-326-0259 to place your order today!



INTERESTING READING FROM A LOCAL JUDGE

Why not give your favorite reader a great book written by a local judge? *Hour of Trial – the Murder of Officer John P. “Buck” Maloney* was authored by James Carn, District Judge. The book is a must for history buffs and anyone who enjoys a good read. Signed copies are available at Otto's Bookstore, 107 West 4th Street. Call 570-326-5764 to reserve yours today!

ANOTHER GOOD READ... insideNewberry!

A subscription to *insideNewberry* makes a great gift! One size fits all! No waiting in line! Shipping is included! Subscription form located on back cover.

insideNewberry urges everyone to shop local and support our home town businesses.

NEWBERRY LIONS CLUB, INC.



"We serve our community and our nation."

PO Box 4051
Newberry Station
Williamsport, PA 17701

Contact any Lions member to learn more about Newberry Lions or to become a member.

LINCOLN SENIOR COMMUNITY CENTER

STEP Building
(The Old Lincoln School - Lower Level)
2138 Lincoln Street • Newberry

Let's Do Lunch at Noon!

Monday thru Friday • Call 327-5483
by 10:30 AM Day Before to Order a Hot Meal

Computer Use & Treadmill Available
Morning Coffee Klatch with Friends

CALENDER OF EVENTS

SETBACK TOURNAMENT

First Thursday of the Month • Pre-registration

Big Screen Movies Every Tuesday 12:45 PM

BINGO

Mondays, Wednesdays, & Fridays 12:30 PM

Healthy Steps In Motion Exercise for Mature Adults

Tuesdays & Thursdays 9:30 AM

Bible Study w/Local Clergy Wednesdays 12:15 PM

FLU SHOTS

Monday, October 24 – 10:00 AM to Noon

BLOOD PRESSURE CLINIC

Performed by Penn College Student Nurses

Tuesday, October 30 – 10:00 AM to Noon

Please call for details.

TURNER'S MARKET

2424 West Fourth Street • Williamsport

The best kept secret in Newberry!

SUBS • SALADS • GROCERIES

570-326-4411

PINE RUN PRODUCTIONS

VIDEOGRAPHY CGI
ANIMATION GRAPHIC
SPECIAL EFFECTS DESIGN

570 398 7227

colin_haun@yahoo.com

WEST END COPY CENTER

Inside **MAS**Printing
Quality, Dependable Printing Since 1982

116 Emery Street • Williamsport • 326-9222

Located Near Williamsport Industrial Park, off Reach Road

Email: masprinting@comcast.net

**TYPESSETTING & DESIGN SERVICES
FREE PICK-UP & DELIVERY • CONVENIENT PARKING**

Digital Full Color and Black & White Copies

8 1/2 x 11 and 11 x 17 Formats

Come in and see us or simply email your files!

Large selection of paper for your business or home printer

Printers of insideNewberry Newsletter

We welcome your tax deductible donations to support the continued efforts of the Newberry Community Partnership to bring quality of life improvements and community events to our neighborhood. Send contributions to NCP, 913 Diamond Street, Williamsport, PA 17701. For information call 570-601-0298

OUR HOME PAGE... www.insidenewberry.com

We're on the World Wide Web! You can now find *insideNewberry* on the internet. Read current and past issues of the newsletter.



insideNewberry Subscription Form

Receive the next 4 issues of *insideNewberry* just by making a donation – and you decide the amount!* Simply clip out this form, complete it and mail it with your donation check payable to *insideNewberry*. You can even give it as a gift!

Send my subscription to *insideNewberry* to:

Name _____

Address _____

Phone (optional) _____

Email (optional) _____

Please mail completed form to:

insideNewberry
c/o Newberry Community Partnership
913 Diamond Street • Williamsport PA 17701

*\$12.75 Suggested Minimum

UPCOMING NEWBERRY-RELATED EVENTS

OCTOBER 2012

Williamsport's Original Order Sons of Italy Lodge 128 Spaghetti Dinner

- Newberry Church of Christ Ascension Hall, 2111 Linn St., Newberry
- Take-Outs Tuesday, October 9, 4:00 PM to 6:00 PM
- Take-Outs & Eat-In Dinner – Wednesday, October 10, 4:00 PM to 7:00 PM
- \$8.00 Adults (\$8.50 at the Door), \$4.00 Children 12 and Under
- Spaghetti & Homemade Meatballs, Salad, Roll & Butter, Dessert, Coffee or Tea

Saturday, October 20 – Rummage Sale

- Lycoming Presbyterian Church
- 8:00 AM to 1:00 PM

Friday, October 26 - Spaghetti Dinner

- Lycoming Presbyterian Church Fellowship Hall
- Take-Outs Available at 4:00 PM
- \$7.00 Adults, \$3.50 Children

Wednesday, October 31 – Trunk or Treat – Don't Miss it!

- Newberry Church of Christ Parking Lot, 822 Diamond Street
- Lots of Candy and a Special Gift for all those who attend

NOVEMBER 2012

Sunday, November 4 – Daylight Savings Ends

- Turns back your clock!

Monday, November 12 – Veterans Day

Wednesday, November 14 – Bloodmobile

- Williamsport City Hall, 245 West Fourth Street, 2nd Floor in the Sechler Room
- 1:00 PM to 6:00 PM

Saturday, November 17 – Meatloaf & Baked Potato Dinner

- St. John's-Newberry UMC, 2102 Newberry Street
- 4:30 PM to 7:00 PM
- \$8.00 Adults, \$4.00 Children 6-10, Children Under 6 Free
- Take-Outs Available
- Served with green beans, corn, applesauce, pepper slaw, rolls and butter and dessert!

Thursday, November 22 – FREE Thanksgiving Day Dinner

- St. John's-Newberry UMC, 2102 Newberry Street
- Noon to 2:00 PM
- Open to anyone who wishes to share in this dinner, donations will be accepted
- Handicapped accessible
- For more info, call the church at 326-5569 Monday thru Thursday

Thursday, November 22 – FREE Thanksgiving Day Dinner

- Newberry Church of Christ, 822 Diamond Street
- 11:00 AM to 4:00 PM
- If you and your family would like to spend this Thanksgiving Day sharing a meal with new friends and neighbors, please join us for a traditional Thanksgiving meal with all the trimmings, plus a new blanket will be given to each family who attends
- Handicapped accessible
- For more information, call the church at 326-0731

DECEMBER 2012

Friday, December 21 – Winter Solstice

Monday, December 24 – Christmas Eve Candlelight Service

- Lycoming Presbyterian Church
- 7:30 PM

Tuesday, December 25 – Christmas Day

Wednesday, December 31 – New Year's Eve