

NEWBERRY COMMUNITY PARTNERSHIP WEBSITE GETS REVAMPED

New insideNewberry Website in the Works

An updated web site is in the works for *insideNewberry* and the Newberry Community Partnership, thanks to volunteers from the Penn College Web Developers Group. Thirty members strong, this eclectic group of students whose age range is 19 to 30+, are honing their skills, while giving back to the community. We are pleased and honored that the group chose the NCP website as one of their projects. Our goal is to create a user friendly interactive format to facilitate better communication with the community. March 2012 is the target to launch the new and improved site.



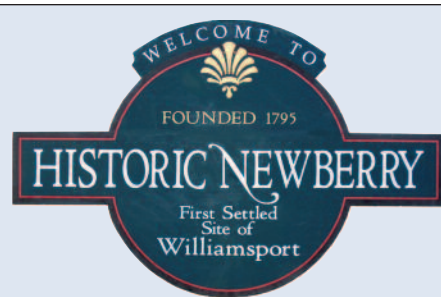
STEP to Assist Flood Disaster Victims

To keep our Newberry neighbors informed, STEP wanted to highlight two programs launched to assist flood victims. As a community, we are acutely aware of the local property devastation that occurred from the September disaster. Although several months have passed, many homeowners still face immense challenges to reoccupy their homes.

The Homes In Need - Flood Recovery Program will assist flood victims with repairs to make their homes habitable. Flood victims who have been identified by the FEMA Disaster Recovery Center and Lycoming County, and who can return to their homes but need to complete necessary repairs prior to moving back, will be referred to the program.



North of Montoursville after the 2011 flooding
Photo provided by the Lycoming County Hazard Mitigation



insideNewberry

To honor the past...inform the present... envision the future, *insideNewberry* is published quarterly by Newberry Community Partnership (NCP) as a service to the neighborhood to promote community pride and facilitate communication between residents, schools, civic organizations and businesses. NCP is a non-profit community based organization established in 2006. Please support our sponsors who made this issue possible!

- Albright Life
- Dunkin Donuts
- Equinox
- J-Styles Salon
- Knight-Confer Funeral Home
- Lepley, Engleman & Yaw
- MAS Printing
- M&T Bank
- Mileto's Sub Shop
- Newberry Estates
- Newberry Lions Club
- Newberry Sub Shop
- Newberry Xchange
- Ralph Steer State Farm
- Rod Chubb School of Music
- Sanders Mortuary
- Tiremasters
- Turner's Market
- Wagging Tails
- Williamsport Battery



insideNewberry
913 Diamond Street
Williamsport, PA 17701
insideNewberry@yahoo.com
www.insidenewberry.com
Phone (570) 601-0298

Alannah Gabriel, **Managing Editor**
Janice Hiller, **Graphic Design**
Rod Chubb, **Web Design**

Your stories and photos are always welcome.

Photos will be returned.

(Continued on Page 2)

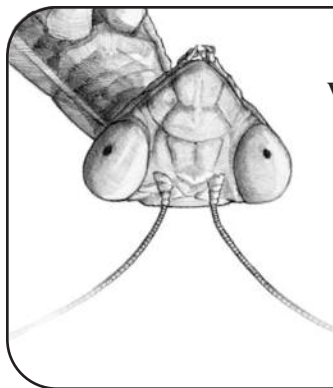
STEP NEWS *(Continued from Page 1)*

STEP worked closely with the PA DCED to submit an application for Neighborhood Assistance Program (NAP) tax credits to fund this program. Eligible contributors receive a 75% state tax credit that may be applied to their applicable corporate income tax over a five year period. STEP solicited corporate investment for the program, resulting in nine sponsors contributing \$283,000.

The Homes in Need - Flood Recovery Program will utilize two resources currently under the STEP umbrella. Crews from STEP's Housing & Building Initiatives and YouthBuild programs will work to make essential repairs or renovations (heating, electrical, plumbing, shell measures, and address other basic mechanical issues) to enable homeowners to return to their homes.

The second program being launched under the Housing Options Pathway, is the Housing Assistance Gap Funding Program. Eligible flood victims will be provided with gap funding to access temporary housing (hotels or apartments) in Lycoming County, while they are searching for permanent housing or working to rehabilitate their flood-damaged home. This program is funded by the Williamsport-Lycoming Community Foundation of Pennsylvania, with assistance from the Board of Commissioner's ACT 137 Fund.

If you are a displaced flood victim who lives in temporary housing or needs necessary repairs in order to return to your home, please contact STEP at 570-601-9509 to receive an application for the program. For more information, please check STEP's website at www.stepcorp.org.



Shop
www.equinoxltd.com
for great outdoor
gear

EQUINOX
Fundamental Tools for Earth Travelers
WILLIAMSPORT, PA

You're invited...

NEWBERRY COMMUNITY PARTNERSHIP ANNUAL OPEN MEETING

**Thursday, January 19, 2012
6:30 to 8:00 PM**

**West End Christian Community Center
901 Diamond Street • Williamsport, PA 17701**

Agenda items will include:

- Review of NCP Activities of 2011
- Financial Report
- Elm Street Program Updates
- NCP Plans for 2012

If you have ideas or concerns you would like to place on the agenda in advance, please call 570-601-0298 or just come... there will be ample time to share with your neighbors.

REFRESHMENTS WILL BE SERVED!

For more information call 601-0298

We look forward to seeing you!

NEWBERRY SUB SHOP

"Locally Owned & Operated Since 1980"
2002 Newberry Street • Williamsport
Open Daily 10-9 • Sundays 4-8
570-326-5544

Sherry W. Strayer
Owner

Dawn M. Flexer
Manager

We welcome your tax deductible donations to support the continued efforts of the Newberry Community Partnership to bring quality of life improvements and community events to our neighborhood. Send contributions to NCP, 913 Diamond Street, Williamsport, PA 17701. For information call 570-601-0298

NCP ELM STREET FAÇADE IMPROVEMENT PROGRAM

Four Properties Completed in 2011

The NCP Elm Street Façade Improvement Program has completed work on four properties in the 1900 block of West 4th Street, Zone 1 of the Elm Street district target area; the gateway to Newberry.

We all love before and after photos of “make over’s”. However, because *insideNewberry* prints in black and white the improvements are not readily apparent. We invite you to come to our open meeting, January 19th where color photos will be on display. (See page 2)

Properties that received improvements and Elm Street funds invested:

- #1929 A new porch roof, new porch deck, porch repairs; painting the front of the house. \$4560.30
- #1937 New aluminum fencing; painting the awning, spouting, front shakes, trim board, soffit and fascia - \$4185.00
- #1941 Wood shake repair; porch repairs; paint façade and trim of the house; new porch steps; new vinyl replacement front window. \$4195.00
- #1943 Wood shake repair; porch repairs, new porch steps, Paint façade and trim of the house; new vinyl replacement front window; remove one light fixture. \$3970.00
- #1956 Remove existing pole sign, manufacture and install new front entry sign. \$3376.10

Elm Street funds are still available for one more façade grant. A grant is money you do not have to repay.

An Elm Street façade grant provides up to 50% of a project cost, up to \$5,000 per property. A private match of 50% is required if your household income is above 115% of our area median income. Only a 10% private match is required if your household income is at or below 115% of the area median income. In cases of extreme hardship, property owners may perform volunteer or community service work to meet the 10% of the project cost requirement. A relative, community group, or church may perform volunteer work on behalf of the



1929 West Fourth Street



1937 West Fourth Street



1941 and 1943 West Fourth Street



1956 West Fourth Street

property owner if the property owner is unable to perform work due to health concerns or physical limitations.

Owners of commercial properties must pay 50% of the total project cost.

Façade grants are available to property owners, so if you are a tenant in a rental property, please contact your landlord about this opportunity.

For more information or application please call 570-601-0298.

WELCOME NEW NEIGHBOR!

Quantum Strategic Personnel Solutions Finds Home in Newberry

In October, Quantum Strategic Personnel Solutions moved to its new home in Newberry at the corner of 3rd and Arch Streets (1988 West 3rd Street; the former Susquehanna Bank building). While Quantum is new to this location, it is not new to the area. Formerly located in the Hope Enterprises building on Reach Road, Quantum has been in business since June 2010 when it filled the void left by the since-closed Ashford Staffing. Quantum offers temp, temp-to-hire, and direct placement employment opportunities to job seekers and flexible staffing options to businesses throughout North Central Pennsylvania. While not limited to any specific industry, typical positions at Quantum include light industrial, assembly, skilled labor, administrative support, accounting, and engineering.

With its combined 15 years of staffing experience, the certified staff at Quantum, including Managing Partner, Ted Taylor, SPHR, CSP; Staffing Coordinator, Lindsey Howes (currently studying for her CSP exam); and Staffing Coordinator, Jen Miller, CSP, understands the issues faced by both hiring managers and applicants and are equipped to help both succeed. Its mission is to partner with the community, its workers and its business leaders, to introduce qualified, safe, productive candidates to safe, rewarding, and successful businesses.

“Our commitment to the safety and success of both our employees and our business partners is what guides and motivates us,” says Taylor, “I think the new location, with its easy access and its proximity to both businesses and residential areas, as well as the larger space for testing and training, greatly helps towards those goals.”

Walk-in applicants accepted any time from 9 AM to 3 PM Monday through Friday. For more information, call 601-3000 or visit Quantum at www.quantumsp.com.



Lindsey Howes, Ted Taylor, and Jen Miller of Quantum Strategic Personnel Solutions in front of their new office

DOG OWNERSHIP

Responsible Owner Guidelines

The actions of one dog owner are a reflection of all dog owners. For example, when people do not clean up after their dog on the street, at the park or along the bike path, all dogs are blamed and the community becomes less friendly to pets and their owners. A responsible dog



owner always uses a leash and cleans up after his/her pet.

Having your dog spayed or neutered lowers the chance of developing certain reproductive diseases and entirely removes the possibility of an accidental litter of puppies. Animal shelters are full of unwanted dogs. A responsible dog owner has his/her pet fixed to help keep the unwanted pet population low. If you are looking for a new friend, check your local shelter and consider adoption. Rescuing a dog from a shelter is a noble and rewarding endeavor.

Health care costs for humans and dogs continue to rise. Make sure you have all the proper vaccinations for your dog, which will prevent the need for treatment of many costly or deadly illnesses. A responsible dog owner utilizes good flea/tick prevention and attends regular check-ups with a veterinarian.

Now that a new year is here, remember to renew your dog's license (or obtain a license for your new dog) in January. Having a dog license is one of the best ways for a lost dog to be identified and returned to its owner.

Having fun with your best friend and being a responsible dog owner is good for your well-being, for your pet and for the community.

~ John Dewald, Wagging Tails K-9 Training Center

WAGGING TAILS

K-9 TRAINING CENTER



John DeWald
Owner/Instructor

Phone 570-321-1141
3117 Bottle Run Road • Williamsport, PA 17701

INSIDE OUR SCHOOLS...Reports from Newberry's Schools



Jackson students perform at annual holiday concert.

Jackson Elementary School

Looking Back and Looking Forward – Midyear at Jackson

The midway point is nearly here in our school year; a perfect time to reflect on the beginning months and to plan ahead for spring time.

In school, it is easy to see the growth of our young students over the months - academic growth is what our teachers are always detecting.

Each activity or piece of instruction needs to impact their learning. In the first months of the year, our teachers/staff focus on finding out what the students already know as they enter their grade so they can teach the areas in which they most need to grow. We also review behavior expectations with our students.

October found us celebrating the autumn season with Harvest Day under the direction of Mrs. Fisher, music teacher, the 5th Grade Art Club rode the Great Pumpkin Express Train compliments of the Chamber of Commerce and the Newberry Community Partnership and UGI gas company sponsored the first book give away to our first graders.

November featured parent/teacher conferences, an opportunity for face to face communication about our children's progress.

December brought us colder weather, historic brick street repairs to Wayne Avenue, holiday concerts, an art mural unveiling, a 5th grade musical and a district-wide essay contest that awarded winners (6 from Jackson) a ride on the Polar Express. Guest readers were featured at our second Reading Is Fundamental give away to first graders with a special visit from Dr. Kelley, superintendent of the WASD.



We look ahead to the second semester of our school year knowing we will continue to focus on teaching, learning, communicating and connecting with families. In spring, we will hold our PTO Basket Raffle and Art show. Our Title I reading



WASD Superintendent Dr. Kelley reads to students

support program will offer a family evening event and Book Bingo, a family favorite.

The school year moves by so quickly - each moment is precious. It is incredibly important that our students come to school each day on time and ready to learn.

~ Submitted by John J. Killian, Principal

Saint John's School of The Arts

Get Social with SOTA...

The Saint John's School of the Arts (SOTA) advisory board and staff have been working hard to promote its program through social media: **sotafriends.org** is a new website designed for SOTA alumni, students, families, and fans. It's purpose is to share the past (*individuals can send in SOTA memories*), support the present (*read about what's happening at SOTA today*), and secure the future (*anyone can make a donation to keep SOTA moving forward*). You'll find stories, press releases, photos, videos, and much more. You can also follow us on social websites such as **twitter.com/sotafriends** and also on **facebook.com/sotafriends**. Please check us out!



...and sign up 2012 lessons and classes

Our winter/spring 2012 semester begins the week of January 9th and openings are available for art classes, drama, ballroom dance (all ages: rumba, swing, hustle, foxtrot), brass and woodwind

(Continued on Page 6)

INSIDE OUR SCHOOLS... *(Continued from Page 5)*

instruments, voice, and piano. Call the SOTA office (327-5575) or email us (stjnsotadir@verizon.net) for more information.

West Branch School Celebrating 40 years in education excellence !



20 Fun Facts about West Branch School that Make Us Twice as Nice!

1. WBS used to be a church, Newberry Assembly of God
2. We are a parent-teacher run school, meaning your input as a parent matters!
3. WBS used to teach middle school aged children at the old city jail, now known as the Cell Block.
4. We have respectively low student-teacher ratios, averaging 10:1 !
5. iPads are now a part of our everyday education!
6. Children can start attending West Branch at 4 years 7 months of age.
7. Our school can hold up to 50 students per year.
8. West Branch educators team-teach, meaning they teach together throughout the day.
9. A great number of our alumni have gone on to become top students in their graduating class, valedictorians, and even a Rhodes scholar!
10. Students are treated as individuals here, meaning we understand that everyone learns at a different pace and we incorporate that into their everyday learning.
11. We have 4 full-time teachers on staff.
12. WBS is a non-profit school association, started by our area's parents in 1971!
13. Parent involvement is one of our key foundations.
14. Victor Montejo, a contemporary Guatemalan poet descended from a line of ancient Mayan storytellers and a political refugee from his own country, was hired as a teacher here in 1985!
15. Last year, we had an intern come all the way from Japan named Chiyo Mikamo, to teach our students!
16. Every year, our students participate in the University of Kansas Monarch Butterfly project.
17. WBS has a full-day Kindergarten program.
18. Our "Upstairs" students take a City Trip every year to somewhere exciting!
19. West Branch is a non-graded school; meaning students may progress at their own rate.
20. Each year, our students participate in the Newberry Community Partnership's clean-up project and the Newberry tree lighting, building upon our community outreach! Our students report to us year after year how thankful they are to have had the chance to be a part of such a wonderful kinship!

Roosevelt Junior High School - Circa 19?

A Blast from the Past ...



Row 1 (Left to Right): Florence Federwicz, Dorothy Getchen, Joel Reid, Francis Stanzone Nardi. Row 2: Pauline Majachio, Betty Horn, Barbara Bower?, Marie Paucke Vannucci, Julie Miller, Betty Helminiak, Jim Bounell, ?, Eleanor Hayes. Row 3: Mary Farley, ?. Row 4: Jim Bassett, Connie Lapka, Ann Kennedy, Barbara Zimmerman?, Phil Preziosi, Bill Miller, Don Moday, Larry Eisenhart, Robert Eisenhart, Betsy Lupton, Danny Wilson, ?, Ed B?, John Ridelle. Row 5: Mary or Carolyn? Betron (Teacher), ?, Larue Fish, Jack Temple, Gladys Cromar Kelchner (Teacher). Can you fill in the ?...contact **insideNewberry!** 6

JACKSON ART CLUB RIDES GREAT PUMPKIN EXPRESS

A Teacher's Wish for Her Students Comes True

When art teacher, Sandra Corson met with members of the Newberry Community Partnership (NCP) to discuss the theme for the new mural, she expressed some trepidation when a railroad theme was suggested. She liked the idea but wasn't sure how the students would take to it. "Some of our kids have never been on a train nor have any connection to railroads, she said. I wish they could experience a train ride."

In a conversation with Christy Haberstroh, in the Mayor's office, Corson's wish was mentioned. She suggested a ride on the Great Pumpkin Express might be possible and contacted Jason Fink at the Williamsport-Lycoming County Chamber of Commerce. He in turn contacted the sponsors of the Pumpkin Express who provided tickets for all the students of the Jackson Art Club to ride the train. The kids were so excited... turn out for the ride was 100%. The class had an entire Pullman car to themselves for the ride. "It was just wonderful," Corson said. The kids were really enthusiastic about the mural after the ride.

The NCP and the student artists would like to thank Jason Fink, The Great Pumpkin Express sponsors, members of Jackson's faculty and staff that made this unique experience possible for the students.



Jackson Art Club students aboard the Great Pumpkin Express train. Photo courtesy of Greg Hayes, WASD

If you've missed an issue of *insideNewberry*, back issues are available. Send your request with a small donation to cover cost of mailing to *insideNewberry* 913 Diamond Street, Williamsport, PA 17701.

KAST HOTEL, PUB & GRILL IN NEW HANDS

Local Brothers Purchase Landmark

For five generations the Kast Hotel has been in the hands of the Peterson Family of Newberry. In November 2011 ownership of the historic Kast changed hands when Scott Peterson and Kevin and Shawn Pequignot shook hands to close the deal making the Pequignot brothers the new owners.



The Kast Hotel's new owners, Kevin and Shawn Pequignot

Our concerns about radical changes to our favorite pub and restaurant were put to rest when *insideNewberry* met with the new proprietors.

They told *insideNewberry* that the Kast was not just another business investment with potential for growth. "We feel we are the stewards of the Kast's history," said Shawn. The first floor interior will remain the same. Some elements, such as the model train that ran around the perimeter of the pub above the bar, are being restored."

The major change for the Kast is taking place in the upper floors. Renovations have begun on the second and third floors; the Kast will once again be a hotel with 18 rooms available for long or short term rental. The rooms are expected to be available in February.

The brothers are not strangers to the city's west end. They grew up in Linden and attended city schools. Life and business took them east of Williamsport but Kevin told us, "Now that I'm back, spending so much time here in the Kast, I'm reuniting with guys I played with in Little League and school friends I haven't seen in decades. It's really been great. I would like the Kast to be the Cheers of Newberry," he added.

The kitchen is now open 7 days a week, 11 AM – 10 PM (till midnight Friday and Saturday). Pub hours are 11 AM – 2 AM. The brothers have increased the staff to serve you better and expanded the lunch and dinner menu, which features nightly specials – not to worry; you'll still find your favorites.

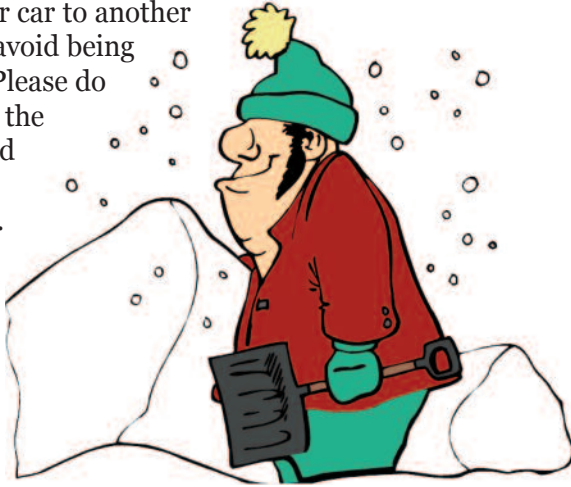
The Kast Pub & Grill is located at 723 Arch Street, Williamsport, PA Phone 570-322-3388.

EDITOR'S NOTE: *insideNewberry* regrets we were unable to meet with Scott Peterson to say good-bye and good luck before leaving town. Perhaps we will catch up with him when he returns for a visit.

A GOOD NEIGHBOR'S DUTY

Snow Removal Reminder

If there is a sidewalk fronting your property on any street, lane or alley (including corner crosswalk), snow must be removed from the full width of your sidewalk within six (6) hours after ceasing to fall. This applies to vacant lot owners as well. Please do not pile removed snow on the street, or block any fire hydrant or sewer opening. If you usually park on the street, please consider moving your car to another location to avoid being plowed in. Please do not park on the sidewalk and block pedestrians. On behalf of your neighbors, Thank You.



NEWBERRY LIONS NEWS

Eyeglass Recycling...

Changing Lives, One Pair at a Time

In just about any dresser drawer, one can find a pair of eyeglasses that are no longer being used. That same pair of eyeglasses can change another person's life.

That's why Lions Clubs International started the Lions Recycle for Sight program. Everyone can help.

Throughout the year the Newberry Lions and Lioness collect used eyeglasses and deliver them to regional Lions Eyeglass Recycling Centers (LERCs). LERC volunteers clean, sort by prescription strength and package the glasses. Most of the recycled glasses are distributed to people in need in developing countries where they will have the greatest impact.

Lions accept prescription and reading glasses, sunglasses, plastic and metal frames. Children's glasses are especially needed.

Imagine if you could help a child read. An adult succeed in his job. A senior maintain her independence and provide a community with more opportunities to grow and thrive. Everyday the Lion's recycling programs do all this and more.

Here's how you can help locally:

- You can drop off your old eyewear at the Lions-sponsored drop box at Winner Hardware, 1699 Dewey Avenue;
- Contact any member of the Newberry Lions or Lioness Club;
- Call 323-9825 or 601-0298.

For more Eyeglass Recycling information or to watch a video "New Glasses, New Life" visit the Lions International website at www.lionsclubs.org



Maybe today
someone will come—
but maybe not.

Every day 51 friends you haven't met yet gather together here. Tomorrow you could make it 52. Our Adult Day Health Center also includes transportation, an on-site medical clinic with same-day appointments, lunch and supplemental home care. Come spend the day with us.

322-LIFE
AlbrightLIFE.org

**ALBRIGHT[®]
LIFE**
Living Independently For Elders
A MINISTRY OF ALBRIGHT CARE SERVICES

Funding may be provided by Medicare, Medicaid, Long Term Care Insurance or private resources. Must reside in Lycoming and part of Clinton County (zip codes 16848, 17721, 17726, 17745, 17747, 17748, 17750, 17751, 17767, 17779), be over age 60 and determined medically eligible by the Area Agency on Aging and be able to live safely in the community with LIFE services. All non-emergency services must be provided/approved by LIFE.

NEWBERRY LIONS CLUB, INC.

*"We serve our community
and our nation."*



PO Box 4051
Newberry Station
Williamsport, PA 17701

Contact any Lions member to learn more
about Newberry Lions or to become a member.



WILLIAMSPORT BUREAU OF FIRE

FIRE PREVENTION DIVISION

TIPS TO KEEP YOUR HOME SAFE IN 2012

A New Year's Resolution That Could Save Your Life

Every January many of us reflect on the previous year and try to make "New Year resolutions" to make changes in the New Year. Some examples would be to lose weight, spend more time with the family, get a new job, exercise more, etc. Assistant Chief Todd Heckman and Fire Inspector Sam Aungst would like to suggest a "New Year resolution" that might save you and your family's life in 2012: "I will install, test and maintain smoke alarms on each floor, in each bedroom, and outside all sleeping areas in my home."

Inspector Aungst says "Working smoke alarms can mean the difference between life and death in a fire." According to the nonprofit National Fire Protection Association (NFPA), working smoke alarms cut the chance of dying in a fire in half. Meanwhile, roughly two-thirds of all home fire deaths result from fires in homes with no smoke alarms or no working smoke alarms. "Smoke alarms detect and alert people to fire in its early stages, giving people the time needed to escape safely," says Chief Heckman. "That's why it's so important for every home to have them in all recommended locations, including bedrooms."

Over 100 Pennsylvanians lost their lives in fires in 2011. More than half of these fatalities were in homes with no maintained smoke alarms. Aungst added, "Working smoke alarms would have alerted these victims in time to escape the fire".

The Williamsport Bureau of Fire, Fire Prevention Division offers these tips for making sure smoke alarms in your home are maintained and working properly:

- Install smoke alarms in every bedroom, outside each sleeping area, and on every level of the home.
- Test smoke alarms at least once a month using the test button, and make sure everyone in your home knows their sound.
- If an alarm "chirps," warning the battery is low, replace the battery right away.
- Replace all smoke alarms, including alarms that use 10-year batteries and hard-wired alarms, when they're ten years old (or sooner) if they do not respond properly when tested.
- Draw an escape plan for your home and practice it regularly by activating your smoke alarms.

If you need smoke alarms, they are available free of charge at the Fire Prevention Division, 440 Walnut St., Williamsport.




PUT A FINGER ON IT!
WORKING SMOKE ALARMS SAVE LIVES.

State Farm®
Providing Insurance and Financial Services
Home Office, Bloomington, Illinois 61710



Ralph Steer, Agent
1945 West 4th Street
Williamsport, PA 17701
Bus: 570-323-2111
Ralph@ralphsteer.com
P045151 4/04

DUNKIN' DONUTS SERVING YOU SINCE 1973

OF NEWBERRY



1975 West Fourth St
Williamsport, PA 17701

REGULAR MEETINGS OF CIVIC & OTHER GROUPS IN NEWBERRY

These active groups welcome new members, just call to let them know you'd like to attend. To be listed, contact Editor, *insideNewberry*, 913 Diamond Street, Newberry, PA 17701 or insideNewberry@yahoo.com.

BOY SCOUT TROOP 14.....326-5569
Don Cohick, Scoutmaster • Every Monday • 7:30 PM
St. John's–Newberry UMC • 2101 Newberry Street
Open to boys age 11 or older

CUB SCOUT PACK 14326-5569
Every Wednesday • 7:00 PM
St. John's–Newberry UMC • 2101 Newberry Street
Open to boys in Grades 1-5 or ages 7-11

**NARCOTICS ANONYMOUS (NA) &
ALCOHOLICS ANONYMOUS (AA)**323-6297

Narcotics Anonymous Meets
Sundays Noon-2 PM • WECCC

Alcoholics Anonymous Meets
Wednesdays & Saturdays at 7:00 PM • WECCC

If attending, use side entrance off gravel parking lot.
These support groups welcome new members.
For additional information, call the
WECCC office at the number listed above

**NEWBERRY COMMUNITY
PARTNERSHIP**329-4141 or 601-0298
2nd Thursday of the Month
6:00 PM • WECCC

*If you would like to present an idea or have a
neighborhood concern, please call to be
placed on the agenda.*

NEWBERRY LIONESS322-8302
1st Tuesday • 6:30 PM Dinner followed by Meeting
St. Matthew Lutheran Church • Linn Street

NEWBERRY LIONS326-0259, 323-9756, 323-9825
2nd & 4th Tuesday • 6:30 PM
Lions Building • Newberry Park

ORIGINAL SONS OF ITALY – LODGE 138326-9222
2nd Monday • 7:00 PM

(570) 329-2808

www.newberryexchange.com

NEWBERRY XCHANGE

BUY & SELL

Diamonds • Gold • Televisions • DVDs
Video Games • CDs • Coins and More

846 Diamond Street

Williamsport, PA 17701



675 Arch St.
Newberry

322-8473

Lifelong Williamsport native & Newberry resident

Christian D. Frey

Estates • Wills • Power of Attorney
Boundary Disputes • Contract Law

Lepley, Engelman & Yaw
ATTORNEYS - AT - LAW LLC

Call 323-3768

140 East Third Street • Williamsport • www.lepleylaw.com



KNIGHT-CONFER FUNERAL HOME, INC.

John M. Confer
Supervisor/Owner

John E. Springman
Funeral Director

323-7717

1914 Memorial Avenue • Williamsport, PA 17701
www.knightconferfuneralhome.com

"Locally Owned & Operated Since 1879"



FULL SERVICE SALON

1969 West Fourth Street • Williamsport, PA 17701
Dunkin Donuts Plaza in Newberry

570.567.7086

Walk-Ins Welcome • Open 7 Days Per Week!

NEWBERRY NEW GARMENT AGENCY ?



The Newberry Branch of NGA-Needlework Guild of America is in its 98th year of operation and is part of a national charity. Each year the organization distributes thousands of articles of new clothing to local member agencies throughout our community. Hundreds of individuals will receive clothing, coats, or shoes, and many countless others will also be helped through the efforts of NGA whose names we'll never know. And the needs are increasing every year...

The largest distribution of clothing takes place each year on the Monday after Thanksgiving. The Annual Ingathering takes place at St. John's/Newberry UM Church. Although the majority of requests are filled at this time, NGA continues to fill requests for clothing, linens, shoes and more year-round.

For more information, visit www.nga-inc.org. For information about joining NGA and their local efforts, or to make a donation, contact Debra Buckman, president of the Newberry Branch, dbuckman@pct.edu.



The photos are from the NGA's Annual Ingathering held at Saint John's-Newberry United Methodist Church. Shown in the pictures are NGA members and volunteers Becky Pryor, Carol Johnson, Marion Horak, Coralee Patterson and Sandy Jansson.



LINCOLN SENIOR COMMUNITY CENTER

STEP Building
(The Old Lincoln School - Lower Level)
2138 Lincoln Street • Newberry

Let's Do Lunch at Noon!

Monday thru Friday • Call 327-5483
by 10:30 AM Day Before to Order a Hot Meal

Computer Use & Treadmill Available

Morning Coffee Klatch with Friends

CALENDER OF EVENTS

SETBACK TOURNAMENT
First Thursday of the Month • Pre-registration

Big Screen Movies Every Tuesday 12:45 PM

BINGO

Mondays, Wednesdays, & Fridays 12:30 PM

Healthy Steps In Motion Exercise for Mature Adults
Tuesdays & Thursdays 9:30 AM

Bible Study w/Local Clergy
Wednesdays 12:15 PM



Newberry-Jaysburg Christmas

*The Newberry-Jaysburg community
went all out to bring holiday cheer to Williamsport's West End*

2011 was the second year Santa and Mrs. Claus joined Mayor Campana in lighting our Christmas tree that was located on the Brodart corner of West 3rd and Arch Streets. While young and old alike awaited Santa's arrival, Steve Hulslander and West Branch School students led everyone in singing "Here Comes Santa Claus" and other favorite carols. After the tree lighting, everyone was invited into the Brodart lobby to enjoy hot chocolate, coffee and cookies and visit with Santa.

The Newberry Community Partnership would like to thank the following for their support and generous contributions that made it all possible.

- Brodart Co.
- Harvest Moon Restaurant
- Helminiak's Nursery & Green House
- Lamar Advertising
- Newberry Independent Club
- Sanders Mortuary
- West Branch School & Steve Hulslander
- Williamsport's Streets and Parks Department



Cameron Jolin pictured with Santa and Mrs. Claus

Thank you and best wishes for a healthy and prosperous 2012!



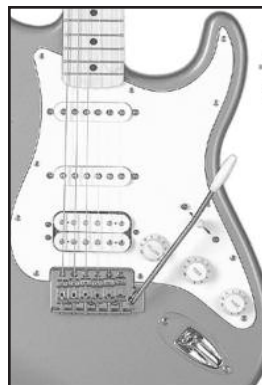
NEWBERRY ESTATES

A NATIONALLY RECOGNIZED COMMUNITY OF QUALITY®
Professionally Managed by Community Realty Management, Inc.



2500 Federal Avenue
Suite 357
Williamsport, PA 17701

570-323-8910
Fax 570-323-1918
T.D.D. 1-800-654-5984



ROD CHUBB SCHOOL OF GUITAR

Private Instruction Available On:

- Guitar
- Bass
- Music Theory
- Sight Reading
- Improvisation
- Composition

ALL AGES - ALL STYLES - ALL LEVELS

570.220.3269
www.rodchubb.com



Jackson Elementary School Art Club students unveil "The Newberry Express", the most recent of their neighborhood murals

JACKSON ART CLUB & NCP UNVEILS LATEST MURAL

The Newberry Express is Coming to Newberry!

"It seems we've started an annual tradition, said Mary Rucinski, NCP Secretary and coordinator of this year's project. Every year for the last five years, the Jackson School Art Club and the Newberry Community Partnership have hosted the unveiling of a new mural to grace a four by eight foot space on the exterior of a Newberry building."

The fifth mural in the series, *The Newberry Express* was unveiled at the school to teachers, parents, administrators and community members this past December with much pride and jubilation. Following the unveiling the PTO provided light refreshments. Present for the unveiling was the school district's Assistant Superintendent, Dr. Don Adams. He commented, "I'm never ceased to be amazed by the talent of our students. What is my greatest pleasure is being able to drive through the city and see our students' art work."

A tribute to Newberry's railroad heritage, the students, under the direction of Art teacher Sandra Corson, worked on the mural, giving up recess time or staying after school to work on it.

The Newberry Express will be showcased on the south side of the Brodart building. There was "no hesitation" when the NCP asked Rick Dill, Brodart vice president and CFO, if the mural could be displayed on the building.

Funding for the mural was made possible through the City of Williamsport Cultural Grant Program.

Murals can be seen at the following locations:

- *A Look at Our Corner of the City*, 2007
Mark Sales & Leasing, Corner of Diamond and West 4th Street – West 4th Street side of building.
- *Newberry: Honoring the Past, Planning for the Future*, 2008
Woodlands Bank, Corner of West 4th Street and Arch Street – Arch Street side of building.
- *Mapping the Course of Our Newberry Neighborhood*, 2009
Turners Market, 2424 West 4th Street and Wayne Avenue – Wayne Avenue side of store.
- *The Patriot*, 2010
Republican League, 1964 West 4th Street – the east side of the building.

And to be installed in the Spring...

- *The Newberry Express*, 2011
Brodart Building, 500 Arch Street – the south side of the building

THE MUD PLANT COMES TO NEWBERRY

Rumors Confirmed

The word was out, assisted by a none too specific story in the Sun Gazette and a host of rumors, that a mud plant was coming to Newberry – a plant that would produce drilling mud for the gas companies to use in their controversial deep well drilling in the Marcellus Shale. It would be constructed in the western end of Newberry, at the site previously occupied by the Kennedy King Project, now owned by Moran Industries. The Safe Clean and Green Committee (SC&G) of the Newberry Community Partnership placed it on their agenda and discussed the possibility that this plant might present a hazard for the people living in this section of Newberry. Pennsylvania’s Department of Environmental Protection was contacted and they recommended a tour of the plant. Steve Webster who oversees the Tank Division for DEP arranged contact with Dennis La Hood of M-I SWACO the company that produces the drilling mud. M-I SWACO is owned by the giant international corporation, Schlumberger which provides services to oil and gas companies.

On October 27th Margaret Tupper, Alannah Gabriel, John Robertson and Ardythe and Robbie Cross took the tour.

We were greeted by Dennis La Hood, who oversees safety for M-I SWACO in 23 states and by the plant manager Tim Bower. The tour led initially past a few small offices and then through a warehouse where we were shown ingredients that were used in the “mud”. They were primarily biodegradable in nature Mr. La Hood informed us and we could see bales of walnut and cottonseed hulls – for adding texture we were told. We were also shown large portable tanks where the mud was mixed and than piped on to trucks. When pressed about the toxicity of the mud Mr. La Hood said it was about as toxic as cement – that it could irritate the skin and cause redness. This is a closed system he told us; there was no pumping of waste into the city sewer system. (We did not



Left to right: John Robertson, Dennis Lahood, Margaret Tupper, Robbie Cross, Tim Bower, Alannah Gabriel

ask what happened to the waste). The facility was also allowed to bring “used mud” back to the plant to be rehabilitated. Since the Marcellus Shale is known to have radioactive elements at least in places, we asked what precautions were in effect for this. Mr. LaHood discounted this as a real problem indicating that any radioactivity was negligible.

From our brief visit it was the impression of those on the tour that the facility was clean and professionally managed. We were not able to determine to what extent, if any, this industrial facility represents a hazard to the people of Newberry – other than the dramatic increase in very large trucks rumbling through our streets. Mr. La Hood said we were welcome to come back for another visit and we may just do that, with additional preparation. We will also communicate with our local DEP to determine their concerns. In the mean time, we suggest that Newberrians, especially those who live near this site keep a vigilant watch.

~ Robbie Cross for the Safe Clean and Green Committee

DO YOU WANT HELP?

We May Be Able to Help with Your Home Repairs!

The Newberry Community Partnership (NCP) wants to know if you need help fixing up your property. Do you have code deficiencies such as crumbling uneven sidewalks, broken or inefficient windows or a yard in need of clean up? Would you like to see improvements to your porch, masonry repairs, repair of exterior wood such as rotted or damaged trim or railings; cosmetic exterior improvements like painting, cleaning, siding; address safety issues with hand rails, lighting and accessibility ramps, etc.

Newberry has many wonderful older homes that need some repairs. The NCP and City of Williamsport are

applying for state funds to help make these repairs. The application requires us to provide specific information about YOUR needs. Help us help you by telling us what your home repair problems are.

There is no obligation, just information about your home repair wishes is required at this time.

Please contact our office 601-0298 as soon as possible to be included. If you are a tenant, please contact your landlord about this request or tell us whom to contact. Do it now!

WEST END CHRISTIAN COMMUNITY CENTER NEWS

WECCC's Soup Kitchen

Our Soup Kitchen is continuing to grow in service to members of our community. As we begin the New Year, we are delighted to announce that we are adding one more day to come eat with us; previously lunch was served on Mondays and Thursdays; now you can join us on Tuesdays as well. If you haven't lunched with us, please come and experience our hospitality and delicious food.

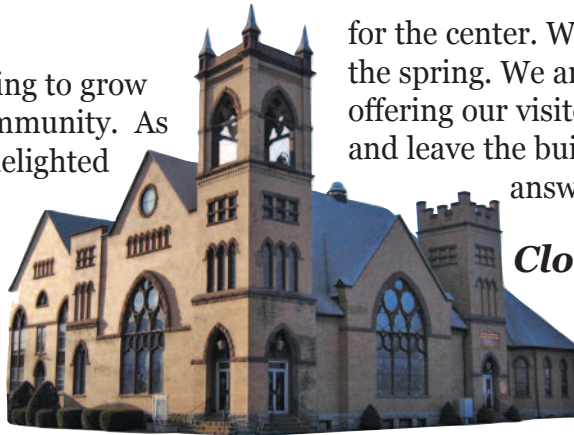
In November the Soup Kitchen had the honor of serving 465 people at our Thanksgiving dinner; Christmas dinner was provided for 313 people on December 19th. **The kitchen is open Monday, Tuesday and Thursday from 11 AM to 1 PM.** Please join us for fun and food.

Easter Flower & Candy Sale

The Community Center will once again be selling Easter flowers and homemade candy in late March and early April. Watch for the advertising at the center. Please support the center by buying Easter flowers and candy eggs for your loved ones from us. The peanut butter and coconut eggs are handmade in our kitchen; the flavors are terrific! These are gifts your friends and family will love.

Accessibility Ramp

The front entrance to West End Christian Community Center will soon have a new and much needed addition. Grants have been received from the Susquehanna United Methodist Church Conference and the Williamsport-Lycoming Community Foundation to make an accessibility ramp possible



for the center. Work will begin on this project in the spring. We are very excited at the prospect of offering our visitors an easier and safer way to enter and leave the building. Our prayers have been answered.

Clothes Closet & Thrift Shop

2011 was a terrific year for our Clothes Closet and Thrift Shop. The word is getting around that we are here to assist individuals and families of limited means in our community. Gently used clothing is very affordable. We also offer a wonderful selection of household items, very reasonably priced. Shop with us and you will experience just how far your dollar can stretch.

***Thank you for supporting the
West End Christian
Community Center
and may God's grace be with you!!***

*~ Submitted by Marge Thompson,
Executive Director/WECCC*

**SANDERS
MORTUARY, LTD.**

Refined service. Tasteful surroundings.
Family owned since 1938.

William H. Kieser – Supervisor, F.D.
Michael R. Lingg – Funeral Director
Larry H. & Nancy A. Sanders – Funeral Directors

www.SandersMortuary.com • 821 Diamond St. Williamsport, PA 17701 • 322-3466

Williamsport
 **Battery
WAREHOUSE, Inc.**

JOE CUBBERLEY

For All Your Battery Needs

Phone (570) 326-6911
Fax (570) 326-9108
Cell (570) 971-8870

2020 Federal Avenue
Williamsport, PA 17701
www.williamsportbattery.com

TURNER'S MARKET

2424 West Fourth Street • Williamsport

The best kept secret in Newberry!

SUBS • SALADS • GROCERIES

570-326-4411

insideNewberry Subscription Form

Receive the next 4 issues of *insideNewberry* just by making a donation – and you decide the amount!* Simply clip out this form, complete it and mail it with your donation check payable to *insideNewberry*. You can even give it as a gift!

Send my subscription to *insideNewberry* to:

Name _____

Address _____

Phone (optional) _____

Email (optional) _____

Please mail completed form to:

insideNewberry
c/o Newberry Community Partnership
913 Diamond Street • Williamsport PA 17701

*\$12.75 Suggested Minimum



OUR HOME PAGE...

www.insidenewberry.com

We're on the World Wide Web! You can now find *insideNewberry* on the internet. Read current and past issues of the newsletter.



Mary Mileto
Proprietor

Est. 1972

Arlene Ardrey
Manager

Mileto's Sub Shop

"We are family and big on people"

TUESDAYS – SENIOR DAY (55 plus)

20% OFF TOTAL PURCHASE

– We do all fundraisers –

2127 West Fourth Street
Williamsport, PA



323-0103

M&T Bank.
Understanding
what's important.

 M&T Bank



www.mtb.com © 2007 M&T Bank. Member FDIC.

UPCOMING NEWBERRY-RELATED EVENTS

JANUARY 2012

Monday, January 16 – Martin Luther King, Jr. Day

Thursday, January 19 – NCP Open Meeting

- 6:30 PM to 8:00 PM, WECCC, 901 Diamond Street, Williamsport
- All are welcome

Saturday, January 21 – St. John's-Newberry UMC Meatloaf Dinner

- 4:30 PM to 7:00 PM, 2101 Newberry Street, Williamsport
- Adults \$8.00; Children 4+ \$4.00; Children 3 & Under Free

Monday, January 23 – Chinese New Year

FEBRUARY 2012

Tuesday, February 14 – Valentine's Day

Monday, February 20 – President's Day

Wednesday, February 22 – St. John's-Newberry UMC Ash Wednesday Service

- 7:00 PM, 2101 Newberry Street, Williamsport
- Receiving of Ashes and Holy Communion

MARCH 2012

Sunday, March 11 - Daylight Savings Time Begins – Set Your Clocks Ahead One Hour

Saturday, March 17 – St. Patrick's Day

Tuesday, March 20 – First Day of Spring

Saturday, March 17 – St. John's-Newberry UMC Meatloaf Dinner

- 4:30 PM to 7:00 PM, 2101 Newberry Street, Williamsport
- Adults \$8.00; Children 4+ \$4.00; Children 3 & Under Free

Saturday, March 24 – Original Sons of Italy Lodge 138 Ladies Night Out

- 7:00 to 11:00 PM, Duboistown Fire Hall, Euclid Avenue
- Tickets \$20.00 – Only 275 tickets will be sold!
- Includes food, drinks, desserts, and drawings for 5 major prizes and 40+ additional prize drawings
- For tickets call Camille Salvatori, 326-9222

APRIL 2012

Early April – WECCC Easter Flower & Candy Sale

Sunday, April 8 - Easter Sunday

WEST END COPY CENTER

Inside **MAS** Printing

Quality, Dependable Printing Since 1982

116 Emery Street • Williamsport • 326-9222

Located Near Williamsport Industrial Park, off Reach Road

Email: masprinting@comcast.net

TYPESETTING & DESIGN SERVICES
FREE PICK-UP & DELIVERY • CONVENIENT PARKING

Digital Full Color and Black & White Copies
8 1/2 x 11 and 11 x 17 Formats

Come in and see us or simply email your files!
Large selection of paper for your business or home printer

Printers of *insideNewberry* Newsletter