



inside Newberry

To honor the past...inform the present...envision the future, *inside Newberry* is published quarterly by the Newberry Community Partnership(NCP) as a service to the neighborhood to promote community pride and facilitate communication between residents, schools, civic organizations and businesses. The NCP is a non-profit community based organization established in 2006.

inside Newberry is available at the following locations:

- Equinox
- Experience Works
- K-9 Kuts & Spaw
- Kast Hotel
- Knight-Confer Funeral Home
- MAS Printing
- M&T Bank
- Mileto's Sub Shop
- Newberry Dunkin' Donuts
- Newberry Estates
- Newberry Lions Club
- Oberjoch Kennels
- Ralph Steer – State Farm
- Sanders Mortuary
- Tiremasters
- Willard Battery Outlet
- Williamsport Battery
- West End Christian Community Center

Please support our sponsors who made this issue possible!



ELM STREET DESIGNATION

Newberry Community Partnership Receives Grant

For the Newberry Community Partnership (NCP) the long awaited announcement of the sought after Elm Street designation for Newberry became a reality December 20, 2007. This very satisfying outcome represents two years of collaborative effort and perseverance by the board members of NCP and the City's Office of Economic and Community Development. The \$150,000 Administrative Grant provides funds for three years to cover the cost of furnishing and maintaining an office in the West End Christian Community Center (WECCC) and hiring a full time Elm Street manager.

In the announcement from the state's Department of Community and Economic Development, Dennis Yablonsky, Secretary, said "The City of Williamsport and the NCP already have established a great relationship through joint community events, such as block parties, tree plantings and community cleanup and they have laid the groundwork for a fantastic future. When a community organization shows this kind of commitment and dedication to enhancing the well-being of its residents, then DCED will help kick-start additional efforts." The Elm Street Program is a component of Governor Ed Rendell's \$2.8 billion economic stimulus package.

We hope to have more Elm Street details to share with you at the Partnership's upcoming **Annual Open Board meeting Thursday, January 31, 7:00 PM at the WECCC, 901 Diamond Street.** Other agenda items will include a review of 2007 activities, financial report, confirmation of elected officers and plans for 2008. All interested neighbors and members of City government are invited to attend.

THE END OF AN ERA

E.H. Bernstine Pharmacy Closes

The city's last and only independently owned pharmacy slipped quietly into our local history when Donald Rishcoff locked the door of E.H. Bernstine Pharmacy for the last time Friday, December 14 at 6:00 PM.

For 50 years, the pharmacy served three generations of Newberry residents from its location at the corner of West 4th Street and Wayne Avenue in Newberry. Don and his wife Pat purchased the pharmacy in 1970. Don noted the changes through the years. "When we took over, business was transacted by phone, mail or in person; the prescription labels were done on a manual typewriter. Now everything is computerized." The Rishcoff's children and grandchildren have all worked in the pharmacy at some point in their lives. "The one constant was Martha Ensinger who was a vital part of our staff for 30 years," said Pat. She also expressed how fortunate they felt to have had such good customers and how much they will miss seeing them.

There were teary moments throughout that last day as family, friends and loyal customers stopped by to reminisce and offer the Rishcoffs well wishes for a happy and well deserved retirement. *insideNewberry* would like to echo those sentiments on behalf of the entire community. Thank you, Don and Pat for three decades of wonderful service to Newberry.



INSIDE NEWBERRY IN 2008

Welcome to Another Year!

We've made one complete trip around the sun since *insideNewberry* returned to the neighborhood. The Newberry Community Partnership (NCP), our publisher, would like to thank the community for its enthusiastic welcome. Our sponsors and subscribers made the return possible through their generous financial support and we are happy to report they are keeping us in the neighborhood for another year to fulfill our mission: ***To honor the past...inform the present and envision the future.***

NEWBERRY LITTLE LEAGUE

Fundraiser for Field Upgrade Underway

The Newberry Little League (NLL) is currently raising funds for the much needed upgrade of their baseball diamond at Schultz Field.

Although a major renovation was done in 1999, eight years of hard play and extreme weather patterns have taken their toll on the field.

As of this writing, the Field Revitalization Fund is well short of the \$2,000 required to make the critical repairs, which are scheduled to begin early March.

"The first step is to edge and cut out the field to bring it up to Little League Regulations," said Joe Hamm, who Co-Chairs the Revitalization Team with Kurt Caruso. The other "fixes" include leveling the infield and filling it with DiamondTex, rebuilding and replacing the pitchers mound, batters box and home plate area. New sod will be placed where ever needed. The field will then be airified and over seeded, followed by a heavy duty rolling of the field. Work is slated to be done the weekend of March 8, 9 & 10.

To get the job done, the 2008 revitalization team has called on the expertise of the crew who did a tremendous job of rebuilding the field in 1999. While working on the project, Jimmy Scott, who at the time was head of the ground crew at Lamade Field commented "Wow, I have never seen this many volunteers show up at other field renovations I've done." The Newberry Board members just smiled.

That is exactly what spells NEWBERRY! Everyone coming together to make things happen. It's the "can do spirit" that makes our closely knit community one we're proud to live in. The Newberry Little League asks you to make the commitment to help in whatever way you can with the upcoming field renovation. Let's provide our kids with a safe ball field that inspires them to play their best and make the community proud.

STEP UP TO THE PLATE! Make checks payable to Newberry Little League and mail to Joe Hamm, Attn: Field Revitalization, 3662 Pleasant Valley Road, Cogan Station, PA 17728. Questions? Call Joe Hamm (570) 998-2862 or Kurt Caruso (570) 322-2262.

MURAL DEDICATION SCHEDULED

Join us at the 3rd Annual Neighborhood Block Party!

Dedication of the Newberry Mural, "A Look at Our Corner of the City" will be one of the highlights of the **3rd Annual Neighborhood Block Party slated for Friday, March 28, 5:00 to 7:00 PM.** The NCP will host, providing refreshments, music and merriment. This annual celebration gets bigger and better every year so save the date; you don't want to miss this one! Rain or shine, we'll see you on the square, corner of West 4th and Diamond Street in front of the WECCC.



These pictures show just how much the Newberry Little League field needs your help to provide a safe place for YOUR kids to play baseball!



Thank You Newberry!

Denise & Lynn Barner would like to thank the Newberry community for welcoming their building project with open arms. Because of your support, Tiremasters Inc. has had an outstanding first year at their new location, 675 Arch Street. We continue to support the Newberry Community Partnership in their quest for the revitalization of Newberry, and are very proud to be members of a wonderful neighborhood. We look forward to many successful years as your Automotive Servicing and Repair Center right in the heart of Newberry.



675 Arch Street • Newberry • 322-8473

WECCC NAMES NEW DIRECTOR

Thompson Takes the Reins in October 2007

Marge Thompson was named the new Director of the West End Christian Community Center (WECCC) following the resignation in July of founding Director Pam Wollet, who left to pursue her Master's Degree in Social Work at Marywood University. "The Center will benefit from Marge's dedication and enthusiasm to improve the lives of everyone in the community," said Pam of Marge's appointment. Marge is not a new face at the Center. For two years she was secretary to Pam and responsible for raising funds to support the Center's community outreach prior to her promotion. Since taking office in October, Marge reports that the Center's By-laws have been ratified by the Church Conference and she is currently working to fill 13 Board of Directors positions. "This year I hope to expand the library to include an Adult Book Section and videos that families can enjoy," said Marge. Other plans include equipping the Center to function as a Disaster Relief Shelter for Newberry. Of course, the community can continue to look forward to dances, festivals and other events throughout the year.

The Center continues to host the popular Clothes Closet & Thrift Shop which is now open Wednesday afternoon from 4:30 to 7:00 PM as well as the usual Saturday hours, 8:30 till Noon. Just a reminder, the Fellowship Hall and Sanctuary/Multi-Use Area are available to rent for weddings, parties, meetings and events. The WECCC is located at 901 Diamond Street, at the corner of West 4th and Diamond Streets, Phone 323-6297.

In speaking of the Center and her new position, Marge said, "I am very happy to be here in this capacity and hope the people of Newberry will think of us as their friend. With God as our Father, we are all brothers and sisters and should help one another."



SWEETS & TREATS IN NEWBERRY

Remembering Whipple's Bakery

Long before Dunkin' Donuts graced our Arch Street Corner, Whipple's Bakery was located at 907 Arch Street, near the statue. From 1961 until 1978 the bakery was nestled between a drug store and Markin Knight's law office. It was a family business run by Jean and Clifford "Roy" Whipple. A local favorite, Roy made everything from scratch; he never used a mix or froze anything. He started his baking at 2:00 AM, opening at 6:00 AM for local business pick-ups and at 8:00 AM for patrons. Loyal customers came in for such tasty confections as pies, cakes, breads, sticky buns, and raisin filled cookies. The chocolate éclairs had homemade custard inside them and were a hometown favorite.

Daughter Susanne worked in the bakery, helping her parents wherever needed. Son Clifford Jr., "Chip," lent a hand, cleaning and hand washing pans. Yes, I said "hand washing," as they did not have an automatic dishwasher. Roy specialized in beautifully hand decorating all the cakes. He had learned his craft from Jean's family, who had owned Kafuffle's Bakery, which then became the Hearthstone. One particular weekend Roy had five wedding cakes to make. He worked forty hours straight to get them done! Another time the Whipples got snowed in. While they were busy baking, twenty-seven inches of snow had accumulated.

In my conversation with Mrs. Whipple, she expressed genuine pride in the work she and her family did in their bakery, and she was grateful to all their loyal Newberry customers. The friendliness of their patrons made working in Newberry a pleasure. How sweet!

~ Submitted by Wendy Decker

*P.S. We were unable to find a photo of the bakery. If anyone has one, would they be willing to share it with our readers? If so, please contact **insideNewberry**. Your photo will be returned.*

INSIDE OUR SCHOOLS...Reports from Newberry's Schools

Jackson Elementary School

Jackson Celebrates American Education Week in November

During the week of November 12-16, Jackson School celebrated public education and the many benefits of the Williamsport Area School District by conducting many activities. To kick off the celebration, Mrs. Eshelman, Jackson principal, read the book, *A Fine, Fine School*, to the entire school. The reading of the book was the springboard for the activity that followed. Students wrote about why they think that Jackson is a fine, fine school. Below you will find some of the quotes from the student writings.

In addition to the writing activity, many reading activities occurred at the school. Community readers visited the school to read to the Jackson students and to talk to them about their lives. Even Dr. Keith Miller, president of Lock Haven University, visited Jackson to read to all the fourth and fifth graders. Another reading activity that the students participated in was "buddy reading" when older students and younger students read to each other.

Finally, "Ben Franklin" visited Jackson School to talk to the students about his life and his inventions. "Ben's" visit was a nice conclusion to the week of exciting and interesting activities!

We think Jackson School is a fine, fine school because...

"Our teachers are welcoming and full of knowledge."

- Lydia, grade 4

"I love the Jackson eagle t-shirts the PTO gave us."

- Damien, grade 1

"I read books and it is fun."

- Najah, kindergarten

"I think Jackson is a fine, fine school because we learn everyday."

- Fareed, grade 3

"At Jackson School everything is awesome!"

- Shalynn, grade 2

"We have fun things like assemblies and parties."

- Whitney, grade 5



Saint John's School of The Arts

Discover Your Creative Side!

The Saint John's School of the Arts, located at 2101 Newberry Street, offers a wide variety of private instruction and classes. One of the popular classes offered is art. There are classes for elementary students (grades K-5), middle school students (grades 6-8), high school students (grades 9-12), and adults. All art classes are held on Tuesday afternoons and are taught by Jason Paulhamus. Mr. Paulhamus is a freelance artist, and his fine art paintings can be found in local galleries and on his website (www.jasonpaulhamus.com). His works include fine arts commissions, as well as greeting card and t-shirt designs, clip art, game cards, character designs, and product designs. He is currently illustrating his second children's book.





The art classes introduce students to different mediums and subject matters, and beginners are always welcome! Contact the School of the Arts office at 570-327-5575 for more information.



St. John's School of the Arts Elementary Art Class student Gabriel McKeon works on his children's book illustration.



St. John's School of the Arts Adult Art Class students working on their individual projects.



AMERICA RUNS ON DUNKIN'™

Something fresh is always brewin' here!

NEWBERRY DUNKIN' DONUTS

Roosevelt Middle School

Music Department to Perform Show

On March 7th and 8th 2008, the Roosevelt Middle School music department will be performing Disney's *Aladdin Jr.* at 7:30 PM in the Auditorium. This junior rendition takes place in the Arabian city of Agrabah and features the same characters from the Disney cartoon.

Aladdin is a "street-rat" who lived in a large and busy town long ago. When the Princess Jasmine gets tired of being forced to remain in the palace that overlooks the city, she sneaks away to the marketplace, where she accidentally meets Aladdin and they begin to fall in love. Under the orders of the evil Jafar (the sultan's advisor) and his right hand Parrot, Iago, Aladdin is captured. However, he comes across a mysterious lamp that contains the comical Genie who comes to save the day. This production, cast entirely of Roosevelt Middle School student actors, dancers, and crew members, is sure to make you laugh and smile. If you have any questions, please e-mail the director, Mr. Nathan Reed, at nreed@wasd.org.

West Branch School

Snowball Dinner Announced

West Branch School is gearing up for their sixth annual fun and exciting Snow Ball dinner, dance, and auction. Held at the Williamsport Country Club on February 9, 2008, this upscale social event benefits the little red school house in many ways.

Last year, tickets sold out in record time. Ticket and auctions sales, together, brought in a record amount of over \$10,000 which goes towards keeping tuition affordable for families in the area.

"West Branch School has given my children love and inspiration that endures in all facets of their lives. All children are curious, but what I've noticed is that children tend to grow out of that the older they get. West Branch School has a unique way of keeping that curiosity alive in their students," said parent & Snow Ball Chair, Pamela Niemczyk. "Fundraising is essential to keeping this school alive so that my kids can get this excellent education!"



The Snow Ball event is a great way the community can get involved in helping non-profits such as West Branch School. Businesses can underwrite the event with sponsorships or contribute items to the auction. All money raised for this event goes directly to West Branch School, a 501 C (3) Non-Profit Organization. All donations are tax deductible.

If you are interested in donating to the West Branch School Snow Ball Fundraiser or would like tickets for this great event, please contact Pamela Niemczyk at 323-5498 or email at westbranch@comcast.net. Tickets are on sale from December 1- January 25 and are \$40 per person. More information about West Branch School is available on the web at www.westbranchschool.org

Other Happenings at West Branch School...



Students at WBS learn about winterizing the garden and soil preservation.



International Students visit WBS and teach about each of their different countries.



Local resident and Snow Ball event coordinator, Pamela Niemczyk, on the right, with fellow parent Betsy Kimberling

Mileto's Sub Shop



2127 West Fourth Street • Williamsport, PA
323-0103

Mary C. Mileto, Proprietor

REGULAR MEETINGS OF CIVIC & OTHER GROUPS IN NEWBERRY

These active groups always welcome new members, just call to let them know you'd like to attend. To be listed, contact insideNewberry@yahoo.com or Editor, inside Newberry, 913 Diamond Street, Newberry, PA 17701.

AUNT MABELINA'S TATTING & LACE MAKING*

Thursdays • 2:00 to 5:00 PM
Essential Health & Wellness Center • 2128 West Fourth Street

NEWBERRY CRIME COMMISSION323-6451

No Meetings January or February
Next Meeting March 10 • 6:30 PM
St. Matthew's Lutheran Church • Corner of Linn & Pearl Streets

NEWBERRY LIONESS322-8302

1st Tuesday • 6:30 PM • St. Matthew Lutheran Church
Corner of Linn & Pearl Streets (Pearl Street Entrance)

NEWBERRY LIONS323-7769 or 323-2721

2nd & 4th Tuesday • 6:30 PM • Lions Building • Newberry Park

NEWBERRY WALKING GROUP

Yes, We are still walking Saturday mornings
Please call 220-7458 in advance to let MaryJo know you want to walk or she won't be there to meet you.

ORIGINAL SONS OF ITALY – LODGE 138326-9222

2nd Monday • 7:00 PM
Ascension Parish Hall • 2111 Linn Street

SUNDAY MORNING MEDITATION & SOCIAL GATHERING

Rev. Susan Smith • Donations accepted but not necessary!
10:30 – 11:30 AM (Meditation)
11:30 – Noon (Social Gathering)
Essential Health & Wellness Center, 2128 West 4th Street

WEST END CRIME COMMISSION*916-6615 or 337-7089

3rd Tuesday • 7:00 PM • West End Christian Community Center
Corner of West Fourth & Diamond Streets

The West End Crime Commission is a new chapter of the Williamsport Crime Commission.

This group covers the neighborhoods above West Fourth Street north to Hillside Avenue, west to the Williamsport High School and east to Moore Avenue. Meetings are open to the public.

* New listing this issue.

IN MEMORIAM

We note the passing of dear friends and neighbors who called Newberry their home. On behalf of the community we offer our condolences to their families.

- Shirley DiMassimo, age 84, October 1st.
- Frances M. Nelson, age 88, on October 13th.
- Carl "Chick" DiMassimo, age 80 on October 18th.
- Olive I. Hill, age 90, on October 18th.
- Geraldine E. Dynan, age 89, on October 29th.
- Corey Falk, age 25, on November 3rd.
- Timothy Lee Quinn, age 53, on November 3rd.
- Mary L. Long, age 68, on November 5th.
- Eleanor C. Warner, age 85, on November 5th.
- Charles "Bob" Barnes, age 87, on November 8th.
- Martha C. Koskie, age 88, on November 13th.
- Joseph Earle Allison, Jr., age 81, on November 18th.
- Violet H. Engler, age 81, on November 23rd.
- Margaret M Tietbohl, 92, on November 26th.
- Merrill E. Leidhecker, Sr., age 100, on December 3rd.
- Dale E. Reeder, age 54, on December 3rd.
- Janet B. Bodle, age 70, on December 10th.
- Dorothy V. Clark, age 79, on December 10th.
- William James Harvey, age 59, on December 18th.

We apologize if from the date of our last issue to the time of this printing if we have inadvertently omitted anyone.

OBERJOCH



BOARDING & GROOMING KENNELS

Boarding with Conscientious Care
Grooming with Finesse

www.oberjochkennels.com

2800 REACH ROAD
WILLIAMSPORT, PA 17701

TELEPHONE
(570) 323-2721

NCP BOARD MEMBER RETIRES

Denise Barner is stepping down from her position as NCP Secretary and Board Member. She served as Secretary since its formation in 2006. In addition to her duties, Denise played a key role in the publication of *insideNewberry* and was a tireless fundraiser for all the NCP projects. "I'm really going to miss her," said Alannah Gabriel, NCP President. "We worked together so well. Her common sense and light hearted approach to situations made my job a breeze." Board members were impressed with Denise's level of commitment. For instance, in her two years of service she never missed a meeting. "In the annals of board participation, that is practically unheard of," commented NCP member Robbie Cross.

When Denise broke the news of her departure, she explained, "With the increased demands of the business and the Sauers' Family Singers, I can't give the NCP the attention I'd like. I still plan to stay involved. I'm not going anywhere." Thank you, Denise for your service and dedication to our community.

NOW SERVING LUNCH AND DINNER!

Soups • Salads • Sandwiches • Entrees • Desserts



KITCHEN HOURS:
Tuesday-Saturday 11 AM – 10 PM
Sunday Noon – 10 PM

The Kast Pub & Grill
723 Arch Street
Williamsport, PA 17701
Ph. 570.322.3388

BIG BROTHERS/BIG SISTERS

*"The children were nestled all snug in their beds,
while visions of mentors danced through their heads."*

Okay, so maybe Clement Moore's poem doesn't go quite this way, but there are currently eighty-eight children in Lycoming County who are in need of mentors. Big Brothers Big Sisters is unique in its vision to provide successful mentoring relationships for all children who are in need of them, contributing to their potential through professionally supported, one-to-one relationships with measurable impact.

For over 100 years, Big Brothers Big Sisters has been supporting the "Big Magic" that happens between matched "Littles" (the youth to be matched up) and "Bigs" (the mentors). Locally, we support the magic by providing opportunities for the matches to get together; these include trips to the Philadelphia Zoo, Corning Museum of Glass, and local events such as the Little League World Series, Cross-Cutters Games, and events at the Community Arts Center. Through the support and resources of businesses in our community, our organization creates a better tomorrow for children in our area. In addition to the Community Based Mentoring, Big Brothers Big Sisters arranges School Based Mentoring where children are mentored after school at least once a week. Several schools in the area will be participating in programs soon.

How many of us in Newberry can look back on our lives and recall positive adult role models which have in turn shaped our lives? The greater question is, how many of us would work with those children who need our time? A few hours a week is all that is needed to lead youths in the right direction and increase their potential. The rewards are great for both youth and mentor.

If you or anyone you know would be interested in making a difference in the life of a child by becoming a mentor, volunteer, or sponsor; please contact Big Brothers Big Sisters of Lycoming County at 570-321-KIDS (5437).

~ Chrissie Tilburg, Americorps VISTA



NEWBERRY ESTATES NEWS

Newberry Estates Ends 2007 on a High Note

The National Affordable Housing Management Association (NAHMA), headquartered in Alexandria, VA., announced in October of 2007 that Newberry Estates was awarded National Recognition as a Community of Quality (COQ) for outstanding management of Newberry Estates, located at 2500 Federal Avenue, in Williamsport's West End.

Through the COQ National Recognition program, affordable multifamily rental properties can be certified as having achieved a high standard of excellence in the way they're maintained and managed, services they provide, experience and training of personnel, and other criteria.

Shannon Nappi, Property Manager of the newly recognized COQ said, "Newberry Estates scored high on inspection of its physical plant by an objective reviewer, the quality of management reviews, audits, replacement reserves and other criteria. The staff members were judged on their credentials, such as holding a PA Real Estate License, PA Notary Commission, Institute of Real Estate Management Accreditations, and those earned through NAHMA."

We congratulate Shannon and her staff as well as Community Realty Management, the managing agent for Newberry Estates, for providing the highest-quality affordable housing to our lower-income residents while adding value to its larger community.



Suzanne Sigmund, VP of Compliance, CRM; Deborah Neagu, Executive Property Manager; Kris Cook, Executive Director NAHMA; Shannon Nappi, Property Manager Newberry Estates; Debra Kline, Property Manager Lebanon Village; Michael Simmons, President of Community Realty Management; and NAHMA's Director of Government Affairs Michelle Kitchen.

KNIGHT-CONFER FUNERAL HOME, INC.

John M. Confer
Supervisor/Owner

John E. Springman
Funeral Director

323-7717

1914 Memorial Avenue • Williamsport, PA 17701
"Locally Owned & Operated Since 1879"

NEWBERRY ESTATES

Professionally Managed by Community Realty Management, Inc.



2500 Federal Avenue
Suite 357
Williamsport, PA 17701

570-323-8910
Fax 570-323-1918
T.D.D. 1-800-654-5984

IS IT ON YOUR FRIDGE?

Newberry Emergency Alert Magnet

For much of the past year the Safety and Mobility Committee of the Newberry Community Partnership has worked to produce concise instructions that would give the people of Newberry information to deal with various emergency situations. After conferring with city and county emergency officials to arrive at appropriate and concise wording, the committee decided that the most effective vehicle for this information would be a flat 4" x 7" magnet that would attach to a refrigerator and be in prominent view should it be needed.

The next task was to arrive at an affordable means of distributing the magnet to 2,000 plus residences and businesses in Newberry. Fortunately we were able to take advantage of a confluence of materials and human resources, the latter of which included assembling assistance from the men and women at the Lincoln Senior Center, and United Way's "Day of Caring Volunteers", political candidates, neighbors and friends of NCP board members – a true community enterprise. The magnets, along with a copy of *insideNewberry*, a Disaster Preparedness Checklist, Red Cross brochure and Community Center flyer were bagged and distributed door to door on October 6th.

When the volunteers finished their routes they returned to the West End Christian Community Center to enjoy Newberry hospitality with a lunch of handmade pizza from the Kast Hotel and Humdinger's delicious chicken, accompanied by home made salads and desserts provided by friends of NCP. Snacks and drinks were provided by Lycoming Beverage, Frito-Lay, Weis Markets, Pepsi Cola and Dunkin' Donuts.

Finally, the last, (some might say it should have been the first), consideration was funding this project, which would cost just under \$1,500. We are grateful that community spirit is strong in Newberry and a collection of local businesses and organizations provided the financing. Thank you Woodlands Bank, Dunkin' Donuts, Lonza, The Polish Club, The Lions Club, Equinox, LTD, and the City of Williamsport!

Having conceived and produced the emergency alert magnet and distributed it, there is still one remaining important step. **The magnet, to be effective must be on your fridge – or some other prominent appliance, where if needed, it will be quickly available. If you don't have a magnet, or if you notice that your neighbor doesn't have one, please call 326-4657 or 506-1133. Thanks, very much indeed, to all the people and organizations that made this effort possible.**



Volunteers, including Cub Scout Pack 80 from Hughesville, help distribute Emergency Magnets.

State Farm®

Providing Insurance and Financial Services
Home Office, Bloomington, Illinois 61710



Ralph Steer, Agent

1945 West 4th Street
Williamsport, PA 17701
Bus: 570-323-2111
ralph.steer.l8de@statefarm.com



P045151 4/04

M&T Bank.
Understanding
what's important.

 M&T Bank



www.mtb.com © 2007 M&T Bank. Member FDIC.

DO YOU WANT TO BUY A HOUSE, START A BUSINESS OR MAKE NEEDED HOME REPAIRS?

The Williamsport Community Development Office Offers Assistance

The Williamsport Community Development Office (WCDO) has assisted hundreds of City residents make home repairs, buy a house, or start a business. The WCDO is located in City Hall and provides these and many other programs to residents through the federally funded Community Development Block Grant and HOME Programs.

WILLIAMSPORT MAXIMUM INCOME LIMITS BY HOUSEHOLD SIZE (Gross Income From ALL Sources)								
Household Income	One	Two	Three	Four	Five	Six	Sev	Eight
	\$28350	\$32400	\$36450	\$40500	\$43750	\$47000	\$50200	\$53450

SINGLE FAMILY HOUSING REHABILITATION PROGRAM

The most popular City program is the Single Family Housing Rehabilitation Program. Owners of one-family houses in the City limits may receive up to \$25,000 to repair their property. The program has income limits and other requirements, but combinations of grants and loans are available to qualifying households. The type and amount of funding received is based on household income. To qualify you must own and live in your house, have homeowners insurance, and pay your property taxes on time. If you are eligible, inspectors from the WCDO will check your home from attic to basement. They will look for conditions that are dangerous, or not up to standard and suggest ways to correct those conditions. The WCDO has found that electrical systems, roofs, sidewalks, smoke alarms, plumbing, flooring, handrails, heating systems, siding, and windows are common items that need attention. The WCDO will list the work your home needs and help you obtain bids to make needed repairs. You can request bids from any reputable contractor that is in good standing with the City. When you have acceptable bids, the WCDO will prepare contracts and monitor the repair project from start to finish. There is a waiting list for this program; so if you need repairs, and your household income falls below the income limits listed for your household size, call City Hall to get on the list. All Newberry and city residential property owners are encouraged to apply. You can make your home safer, increase its value, and improve your neighborhood too!


ACCESSIBILITY REHABILITATION PROGRAM

Repairing and maintaining your home increases its value, and provides your family with a safe, comfortable

place to live, but did you know that home modifications could provide housing suitable for persons that are disabled or infirm? To help provide accessible housing, the City offers an Accessibility Rehabilitation Program. Owner occupied and rental residential properties occupied by qualified households that include a disabled person may be eligible for a \$5,000 grant for accessibility improvements. This program helps correct some typical problems encountered by persons with disabilities. Common improvements made under this program are installing ramps, grab bars, handrails and accessible showers. If you need home modifications to accommodate a physical disability, and your household income is below the income listed for your family size, contact the WCDO for info on the Accessibility Program.

HOMEOWNERSHIP PROGRAM

The City also provides a homeownership program. The Gap Financing Program assists lower to moderate-income households purchase a Williamsport home. Your household must be income eligible and you must be able to obtain a first mortgage commitment from an accredited financial institution. The first mortgage amount must be equal to at least 80% of the house purchase price. City funds provide second mortgage "Gap Financing". A gap sometimes occurs when the home you want to buy costs more than your first mortgage lender is willing to commit to you. City funds can help fill the gap, but cannot exceed 20% of the purchase price of the house. City gap funds are offered as a 0% interest, deferred repayment loan. Only single-family homes in good condition can be purchased. For information about Homebuyer Gap Assistance or any of the City programs, contact the Community Development Office at City Hall, 245 West Fourth Street, call 327-7511, or visit the City web site at www.cityofwilliamsport.org.



**Williamsport
Battery
WAREHOUSE, Inc.**


JOE CUBBERLEY

For All Your Battery Needs

Phone (570) 326-6911
Fax (570) 326-9108
Cell (570) 971-8870

2020 Federal Avenue
Williamsport, PA 17701
www.williamsportbattery.com

NEWBERRY LIONS CLUB, INC.



*"We serve our community
and our nation."*

**PO Box 4051
Newberry Station
Williamsport, PA 17701**

*Contact any Lions member to learn more
about Newberry Lions or to become a member.*

NEWBERRY MURAL

Mural Unveiled

The Newberry Community Partnership (NCP) is collaborating with Jackson School to create a mural on the West Fourth Street side of the Dollar Bazaar. The funds to create this mural are from a grant the Partnership obtained through the City of Williamsport Cultural Grant Program. *The City of*

Williamsport Cultural Grant Program is an initiative between the City of Williamsport and the Pennsylvania Council of the Arts, a state agency and is administered by the Lycoming Arts Council.

On Wednesday, December 19th at Jackson School, the Newberry Community Partnership (NCP) and Jackson School Art Club unveiled the mural that has been created for the Newberry neighborhood. Attending were members of the Arts Council, NCP Board, Williamsport Area School District, Mayor Wolf and members of City Administration. The official dedication of the mural will occur during the Partnership's 3rd Annual Block Party, Friday March 28th. See calendar for details.



Members of the Jackson School Art Club working on the mural.



STEP TRANSPORTATION

Frequently Asked Questions About Services

What does STEP provide transportation for? Medical appointments, recreational activities, education, employment, shopping, visiting family & friends, holiday activities, church, dining out, social functions and more.

Who are these services offered to? ALL residents living in Lycoming and Clinton Counties.

What if I use a wheelchair? STEP has accessible transportation.

Where do I get picked up? At your door; door-to-door service is provided.

Is there a fee? Rates vary depending on circumstances.

Can I take my baby? Yes and child seats are available.

What about smokers? All vehicles are smoke free.



STEP Transportation provides hassle free transportation when you need it. Newberry resident, Jenny Tagliaferri, began using STEP service when it became difficult for her to use public transportation. "I think I began relying on STEP ever since it started. I still use it once a week to go downtown to have my hair done. Everyone is just wonderful. I thank God everyday for the service."

Mary Mileto was introduced to STEP Transportation during her recent stay at Roseview. "The van picked me up to take me to my doctor's appointments and back to Roseview. It was so convenient & easy," said Mary.

STEP offers customized transportation services that fit your needs. For more info and to apply for transportation service contact STEP: 323-7575 or 1-800-222-2468.



Willard

BATTERY OUTLET

Phone (570) 323-5645 • Fax (570) 323-8184

1957 WEST FOURTH STREET
NEWBERRY PLAZA
WILLIAMSPORT, PA 17701

STEPHEN SHAFFER
Owner



Sanders Mortuary Ltd.

821 Diamond Street
Williamsport, PA 17701
570-322-3466

Larry H. Sanders, Supervisor • Nancy A. Sanders, F.D.
Eugene H. Drinkwine, F.D. • William H. Kieser, F.D.

UPCOMING NEWBERRY-RELATED EVENTS

JANUARY 2008

Newberry Little League & Softball Registration

- Friday, January 11 & 18, 6:00 – 8:00 PM
- Saturday, January 12 & 19, Noon – 2:00 PM
- Schultz Field, Arch Street & Mosser Avenue

Thursday, January 24 – West End Christian

Community Center Auction (Date Subject to Change)

- Monies raised from auction will benefit the WECCC
- 5:00 – 9:00 PM

Thursday, January 31st – Open Board Meeting of the Newberry Community Partnership

- 7:00 – 9:00 PM
- West End Christian Community Center
- 901 Diamond Street, Corner of West Fourth & Diamond

FEBRUARY 2008

February 10 – WECCC Sweetheart Dance

- 1:00 to 4:00 PM
- Bring your honey to the Valentine's Sweetheart Dance
- All styles of love songs for your enjoyment
- Drawings for door prizes, plus food available
- Admission: \$3.00/Person, Children under 5 FREE

MARCH 2008

March 8, 9 & 10 – Newberry Little League Field Project

- See article page 2

March 10 thru 20 – Easter Flower Sales

- Sponsored by the West End Christian Community Center
- May be picked up on the 22nd in time for Easter Sunday
- Call the WECCC for additional information

Friday, March 28 – 3rd Annual Newberry Neighborhood Block Party – RAIN OR SHINE!

- Sponsored by the Newberry Community Partnership
- 5:00 to 7:00 PM
- West End Christian Community Center
- 901 Diamond Street, Corner of West Fourth & Diamond

APRIL 2008

Saturday, April 5 – 2nd Annual Ladies Night Out

- Hosted by the women of Lodge 138, Original Sons of Italy
- 7:00 to 11:00 PM
- DuBoistown Fire Department Social Hall, 2661 Euclid Ave.
- Call 326-9222 for tickets & information

LINCOLN SENIOR CENTER

2138 Lincoln Street • Williamsport, PA 17701
Center Manager – Marge Scott • 327-5483

JANUARY 2008

Friday, 4th, 10:00 AMTrivia Plus
Monday, 7th, NoonProblem Sleepiness Discussion
Monday, 7th, 1:00 PM.....West-End Chapter Meeting & Bingo
Friday, 11th, 1:30 PMCookies & Gourmet Coffee

Natitonal Cookie Month

Monday, 14th, 10:00 AM – Noon**Vision & Glaucoma**

Screen with North Central Sight Services

Monday, 14th, 12:15 PM.....Senior Center Council Meeting
Thursday, 17th, NoonGet a Grip on Stress Discussion

Blood Pressure Check with Susquehanna Home Care

Monday, 21stCenter Closed – Martin Luther King Day

Tuesday, 22nd, 10:00 AM.....Bulletin Board Trivia

Wednesday, 23rd, 9:30 AM.....Koffee Klatch with

Cinnamon Rolls

Last Day for Pancake Breakfast Reservations

Friday, 25th, NoonWinter Rules Safety Discussion

Monday, 28th, 9:00 AM**Pancake & Sausage Breakfast Reservations Necessary**

REGULAR PROGRAMS:

Mondays, 12:45 PMPenny Bingo

Tuesdays, 9:30 AMHealthy Steps in Motion

Wednesdays, 12:30 PMBible Study with

Newberry Ministerium

Wednesdays, 1:00 PMPenny Bingo

Thursdays, 9:30 AMHealthy Steps in Motion

Fridays, 12:45 PMPenny Bingo

FROM OUR READERS...

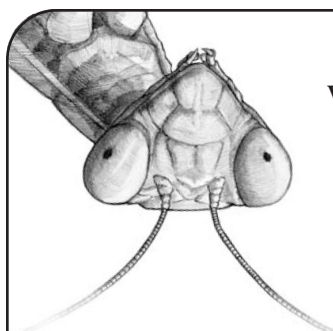
Hello Newberry,

*I was so glad to see **insideNewberry** has resumed. I was a subscriber to the old publication. The only copy I have is the October/December 2007. Are there any back editions available? I left Lycoming County for Berks County in 1973, but Newberry will always be home!*

Thank you for the wonderful article on my Uncle Merrill. Enclosed is my subscription for 2008. If you have any back issues, please send them to me and I will send you an additional donation. Keep up the good work.

Sincerely,

Carol E. (Leidhecker) Spayd

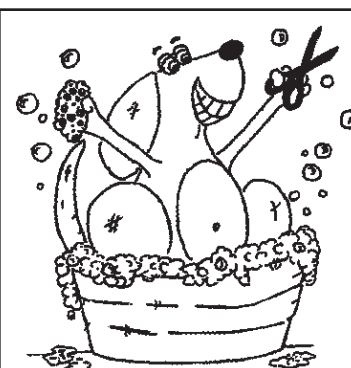


Shop
www.equinoxltd.com
for great outdoor
gear

EQUINOX

Fundamental Tools for Earth Travelers

WILLIAMSPORT, PA



**K-9 Cuts
and Spaw**

623 1/2 Arch Street
(Trenton Avenue)
Williamsport, PA 17701
(570) 327-6180

Rhonda Koch

insideNewberry 2008 Subscription Form

Receive the remaining 3 issues of this year's *insideNewberry* just by making a donation – and you decide the amount!* Simply clip out this form, complete it and mail it with your donation check payable to *insideNewberry*. You can even give it as a gift!

Send my subscription to *insideNewberry* to:

Name _____

Address _____

Please mail completed form to:

insideNewberry
c/o Newberry Community Partnership
913 Diamond Street
Williamsport PA 17701

*\$9.00 Suggested Minimum



WE NEED YOU!

insideNewberry is looking for folks like you to share your Newberry experience with the community. Submit an article or talk to us if you have a story and we'll take care of writing the article. Share your photos, old or new, of Newberry people and places (Photos will be returned). If you can help, write to or call:



Editor, *insideNewberry*
913 Diamond Street • Williamsport, PA 17701
Email: insideNewberry@yahoo.com
570-506-1133

WORSHIP IN NEWBERRY'S CHURCHES

ST. MATTHEW LUTHERAN CHURCH

2233 Linn Street • 323-8132

Rev. H. Frank Showers

Sunday Service9:30 AM
Sunday School10:45 AM

MEMORIAL BAPTIST CHURCH

2100 West Third Street • Williamsport • 322-5546

Rev. Timothy R. Kinney, Sr.

Sunday Services10:45 AM & 6:00 PM
Sunday School9:30 AM
Wednesday Bible Study & Prayer6:30 PM

NEWBERRY CHURCH OF CHRIST

822 Diamond Street • Williamsport • 326-0731

Ron Savits, Senior Minister

Bob Hart, Associate Minister

Traditional Sunday Service8:00 AM
Sunday School9:30 AM
Contemporary Sunday Service10:30 AM
Bible Study & Youth Groups.....Sunday, 6:00 PM

NEWBERRY CATHOLIC COMMUNITY

Rev. Charles J. Cummings

Holy Rosary Church

313 Arch Street (326-4922)

Saturday Mass.....5:30 PM

Church of the Ascension

2111 Linn Street (326-4922)

Saturday Mass.....4:00 PM

Sunday Masses.....8:30 & 11:30 AM

LYCOMING PRESBYTERIAN CHURCH

825 Arch Street • Williamsport • 326-9218

Rev. Richard W. Miller

Sunday Service10:45 AM
Sunday School9:30 AM

ST. JOHN'S-NEWBERRY UNITED METHODIST CHURCH

2101 Newberry Street • Williamsport • 326-5569

Rev. Kraig L. Faust

Saturday Service5:30 PM
Sunday Services8:15 AM & 10:45 AM
Sunday School9:30 AM

MAS Printing

Quality, Dependable Printing Since 1982

TYPESETTING & DESIGN SERVICES • FREE PICK-UP & DELIVERY

- Business Forms & Notepads
- Catalogs & Brochures
- Tickets & Booklets
- Newsletters
- Letterheads & Envelopes
- Graduation Announcements
- Placemats/Menus
- Promotional Products: T-Shirts, Bags, Mugs, etc.

326-9222

116 Emery Street • Williamsport
Located Near Williamsport
Industrial Park, off Reach Road

Email: masprinting@comcast.net

Camille & Michael Salvatori

Printers of *insideNewberry* Newsletter

Are you 55 or older? Are you unemployed?
Are you on very limited income?
Do you think no one will hire you because of your age?

To find out if you qualify for help from Experience Works,
call Dan or Mary at 570-321-5811. No Fee. EEO/AA.

experience works
senior workforce solutions