



## insideNewberry

To honor the past...inform the present... envision the future, **insideNewberry** is published quarterly by Newberry Community Partnership (NCP) as a service to the neighborhood to promote community pride and facilitate communication between residents, schools, civic organizations and businesses. NCP is a non-profit community-based organization established in 2006. Please support our sponsors who made this issue possible!

- Albright Life
- Best Self Storage
- Brodart
- Dunkin Donuts
- Equinox
- Knight-Confer Funeral Home
- Laundry Basket
- Lepley, Engleman & Yaw
- M & T Bank
- MAS Printing
- Newberry Estates
- Newberry Lions Club
- Newberry Subs
- Newberry Xchange
- North Central Sight Services
- Ralph Steer State Farm
- Sanders Mortuary
- Tiremasters
- Woodlands Bank



**insideNewberry**  
 913 Diamond Street  
 Williamsport, PA 17701  
 insideNewberry@yahoo.com  
 www.insidenewberry.com  
 Phone (570) 601-0298

Alannah Gabriel, **Managing Editor**

Janice Hiller, **Graphic Design**

Rod Chubb, **Web Design**

Your stories and photos are always welcome.

Photos will be returned.

## **NEWBERRY COMMUNITY PARTNERSHIP DAY MUSIC JAM FEST, FLEA MARKET & YARD SALE** *Saturday, May 17 from 8:00 AM to 4:00 PM*

Spend the day with the Newberry Community Partnership in Newberry Park. Begin the day shopping for bargains and treasure hunting at our Flea Market. Then stay on for all the live music and a variety of good local food and tasty treats like Sweet Granny's Kettle Corn and More... Party with your friends and neighbors to celebrate our neighborhood and support the NCP.

As we go to press here's what you can look forward to so far:

**8:00 AM – NCP Flea Market & Yard Sale opens. Sell unwanted treasures, collectibles, crafts, etc. in Newberry Park. Bring your own tables or sell from your truck. Spaces are 10'x10' and only \$10.00 /space. Call 570-601-0298 for more details and to reserve your space.**

**NOON –** Live music begins featuring **Wheelin' N Dealin'** and **K.G.+3** and more.

Games for kids and grown-ups, great basket raffles and 50/50s to support Newberry Community Partnership. Look for posters and local media sources for additional activities and surprises.

See you Saturday, May 17th at Newberry Park Fairgrounds located off Linn Street between Diamond and Pearl Street (behind Sanders Funeral Home).

This event is co-sponsored by the Newberry Community Partnership and the City of Williamsport with generous support of the Newberry Lions Club. For more info call 570-601-0298 or 570-279-7937.



Scheduled bands for Newberry Community Partnership Day include *Wheelin' & Dealin'* (top) and *K.G. + 3* (bottom).

# COMMUNITY INVITED TO JOIN IN TO HELP PICK UP NEWBERRY

Friends & Neighbors of Newberry/Jaysburg:

It is time again to come together to beautify our streets, alley-ways and parks. It is apparent many of us walk with bags in hand throughout the year picking up litter daily.

Thanks to all who help! However, it is also rewarding to be part of a larger group effort. Come, bring your community spirit and participate in the **Annual Spring Litter Clean-up on Saturday, April 26th from 9:30 to Noon, rain or shine.**

Sponsored by the Newberry Community Partnership's Safe, Clean and Green team, we shall be registered with the Keep PA Beautiful campaign/Great American Pick-up 2014. The event coincides with worldwide Earth Day activities. Gloves, vests, bags and refreshments will be provided.

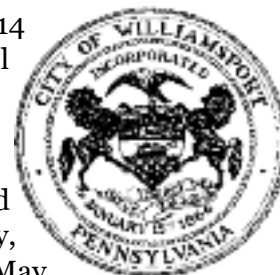
Please meet by 9:30 AM at the northwest corner of West 4th and Diamond Street. **For more information or questions call Julie, 322-6828 or Alannah, 601-0298.**



# CITY-WIDE SPRING YARD DEBRIS CLEAN-UP

*To Begin Monday, April 21, 2014*

The City of Williamsport's 2014 Spring Cleanup of yard debris will begin on "Clean Earth Day", Monday, April 21, 2014 and end on Thursday, May 22, 2014. Residents may begin to place yard debris out for collection on Friday, April 18, 2014 through Monday, May 22, 2014 with all materials placed along the curb-line. **Please Note:**



- Yard Debris Only – limbs, leaves, plant and scrub clippings
- Loose Material Only – **No Plastic Bags will be collected**
- Main Street Pickup Only – No Alley pickup due to equipment limitations
- Residents should **NOT** place yard debris out after May 22, 2014.
- **Residents should be reminded of City of Williamsport Ordinance, Article 737.04 that placing yard waste and tree limbs along roadways is PERMITTED ONLY during the designated Cleanup period. Any Resident who violates Ordinance 737.04 can be fined \$100.00 per day until the debris is removed at the property owners expense.**
- **THE COLLECTION PROCESS WILL TAKE APPROXIMATELY FOUR WEEKS TO COMPLETE.**

## Websites of Interest

WILLIAMSPORT  
BUREAU OF POLICE

[www.williamsportpd.org](http://www.williamsportpd.org)

Economic News, Public Safety Announcements  
and Police Department Information

CONNECT WILLIAMSPORT

[www.connectwilliamsport.com](http://www.connectwilliamsport.com)

An online calendar for Williamsport Area events.  
A place to promote your event.

## CITY PARKS & RECREATION EVENTS SCHEDULED

*The Williamsport Recreation Department is offering spring and early summer activities for the whole family.*

**PLEASE REFER TO OUR  
UPCOMING EVENTS SECTION  
PAGE PAGE 16.**

*Keep an eye out for the  
2014 Recreation Guide coming in May.  
The booklet will provide you with all the  
details of activities for the year.*

# NEWBERRY LIONS PARADE: A FAMILY TRADITION

~ by Wilma Reeder

For decades, a time-honored feature in mid-June has been the Newberry Lion's Carnival. When I was a kid I remember how the week before the carnival arrived, my friend Sue Slee and I would pick cherries from the two trees in my backyard and sell them door-to-door to make money for the games, rides and of course, the renowned French fries. We counted our earnings, dividing them up, and then budgeted out what amount to spend each day.

A highlight of carnival week was the annual Pet Parade. We would plot for days, sometimes weeks ahead for the parade. What would we be this year? Would we finally win the grand prize for best costume? Once, we grouped with some other friends and went as the Beverly Hillbillies, a popular TV show at the time. I dressed as Ellie May, the daughter who loved animals because I had long hair. I don't remember if we won that year or not but we sure had fun.



1983 – My daughter Jennifer (Reeder) Johnson is in the foreground in a red & white dance costume

Being in the parade was always so exciting: Dressing in costume, meeting with friends, hurrying to the St. John's United Methodist parking lot, checking-in and being given a number. After waiting for what seemed like hours the signal to begin would be given. Everyone lined-up and began to march. As the parade snaked passed the Light of Liberty statue and through Diamond Square and on to the carnival grounds by Old



2010 – (Left to Right) My daughter Jennifer (Reeder) Johnson is the Mad Hatter, My granddaughter Gianna Backner is Alice, and then me (Wilma Reeder) is the White Rabbit.

Jackson Playground, (now Newberry Park) we waved, and proudly shouted to friends and family.

The music, lights and the aroma of hamburgers, pizza and those famous French fries drew us closer and closer until we were engulfed into the crowds. We had to push our way through and stand on tip-toe to find where the officials were announcing the prize winners. Sometimes we got lucky and won. Everyone that participated though received a ticket for a free soda.

Years later, my own children would be fortunate enough to share this memorable experience. And then after a few more years, my granddaughter also was able to have the thrill of marching through the streets of Newberry (and sometimes winning the grand prize for best costume.)

## NEWBERRY LIONS PLAN SUMMER EVENTS

### Lions Events Scheduled for Spring & Summer

Sunday, May 4th the Newberry Lions will hold their annual Journey for Sight. Meet at 2:00 PM at Old Lycoming Fire Hall on Dewey Ave and journey on the bike path to the Lycoming Creek Lions Social Hall, where lunch will be served.



**Attention non-profit groups – benefit your own charity too! The lions will share 50% of the funds you raise with your own charity. To sign up or for more details call 570-494-2110.**

The Lions are planning to hold their Pet Parade & Fair in June. As we go to press the dates have not been determined. Watch for flyers and local media for info..

*All Newberry Lions fundraising efforts support many state and local charities for the blind as well as Newberry Little League and West End Babe Ruth Baseball.*

## NEWBERRY LIONS CLUB, INC.

*“We serve our community and our nation.”*



PO Box 4051  
Newberry Station  
Williamsport, PA 17701

Contact any Lions member to learn more about Newberry Lions or to become a member.

# WEST END CHRISTIAN COMMUNITY CENTER NEWS

## Homemade Easter Candy Sale

The WECCC is once again making homemade Peanut Butter eggs and Coconut Creme eggs for Easter. This fundraiser is one of our tastiest. Each box contains 6 eggs and sells for \$6.00. If you would like 3 of each flavor, place your order for a "mixed" box. The flavors are terrific and they make wonderful gifts, too. Call the office at 570-323-6297 to order. Eggs will be available for pick up starting April 10th.



## Community Room Update

We are moving right along with the Community Room. It will be a little while before it will be available to rent for activities and events. Projected completion date is approximately late May or early June. We'll keep you informed of our progress and look forward to announcing its completion.

## Chapel Completed

A chapel has been constructed for all who wish to have a prayer room available to meditate, pray, or just think. You are invited to come, sit and experience the serenity of the chapel during our open building hours.

We are located at 901 Diamond Street, Phone 570-323-6297.

~ Marge Thompson, Executive Director

## Spring & Summer Clothing

Spring is here and the Clothes Closet ladies have replaced the long sleeved, heavy, flannel lined, cold weather clothing with short sleeved, lighter weight, bright colored, spring looking garments. After such a cold winter, all of us are looking forward to preparing for much warmer weather. Shop with us and you will experience just how far your dollar can stretch.

## Soup Kitchen Anniversary

Our Soup Kitchen celebrated its fourth year of sharing our table of food with the community on March 20th. We started from humble beginnings and grew stronger with each passing year. In 2013 the WECCC Soup Kitchen served over 14,000 meals and we look forward to breaking that record this year. Come join us for a well-balanced meal and good company, too. The kitchen is open Mondays, Tuesdays, and Thursdays from 11:00 AM to 12:30 PM. Good food - great fun - jolly conversation - all blessed by God.

## M&T Bank

Understanding what's important®

Newberry Branch  
Phone: (570) 327-1151



mtb.com ©2012 M&T Bank. Member FDIC.

## ALBRIGHT LIFE®

*Living Independently For Elders*

A MINISTRY OF ALBRIGHT CARE SERVICES

*Called to Serve Seniors*

**322-5433 | AlbrightLIFE.org**

901 Memorial Avenue | Williamsport

**DUNKIN' DONUTS** SERVING YOU SINCE 1973  
**OF NEWBERRY**  
1975 West Fourth St  
Williamsport, PA 17701

Shop  
www.equinoxltd.com  
for great outdoor  
gear

**EQUINOX**  
Fundamental Tools for Earth Travelers  
WILLIAMSPORT, PA

**BEST SELF STORAGE** BEST Location... BEST Price!

10% Discount on a Year's Lease  
★★★★★  
or a AAA Discount

- Traditional & Climate Controlled Units
- Fenced & Gate Access

www.bestselfstorage.net

Williamsport • 2887 South Reach Road • 323-7300  
Lock Haven • 115 Washington St. • 748-7778

# INSIDE OUR SCHOOLS...Reports from Newberry's Schools

## Jackson Primary School



### **Outstanding Student Named at Jackson Primary School**

The Outstanding Student for the school year 2013-2014 is Alexandria Chilson, a third grade student from Mrs. Franzen's classroom. Alexandria was selected by the faculty and staff based on academics and leadership qualities. She was presented to the School Board of Directors on March 18, 2014. Congratulations to Alexandria and her family for this honor.

### **Two Students Selected to Present Books to the Board**

Each year two students are selected to present a library book to school board members in recognition of School Board Appreciation in January 2014. The two students selected to represent Jackson Primary were Jakiha Kline and Ayriana Hale.

**Parent / Teacher Conferences are April 16 and 17th – please plan to attend and communicate with your child's teacher.**

*~ By John J. Killian, Principal*

## West Branch School

### **What's Happening at West Branch School?**



### **Many Hands Make Light Work**

*~ By Sarina Bower*

"Many hands make light work." This is an unofficial motto for the families of West Branch School (WBS). One of the unique things about WBS is the Work Days.

A Work Day is when the families work together to maintain the school building, both inside and out. Work Days occur 3 times each year: late August, early November and late April.

As a new family, arriving at the first Work Day of the new school year was a bit intimidating. We were unsure what to expect, as "Work Day" didn't sound like a fun way to spend 3 hours of our weekend.

Upon arrival though, we quickly discovered that the name Work Day was misleading. Yes, there was a list of work that needed to be done: playground inspection, cleaning the gutters, landscaping, organizing the library, fixing loose doorknobs, etc...

But along with the list was an outstanding group of people coming together to take care of their school and, in the process, having a great time.

The jobs to be done are varied: there is something for everyone, from the weekend warrior that has a knack for fixing things to the person that loves the satisfaction of a good thorough cleaning. It is a great way for everyone to pitch in and put their skills to good use.

We have completed 2 Work Days so far and have become good friends with many of the other families at the school. Our spring Work Day will be in late April. We are already looking forward to the warm weather and the opportunity to get the school ready for the upcoming WBS Fair and Summer Branches.

The WBS fair will be Saturday, May 10. This is our first WBS fair and we are excited to be a part of it. We're also eager to participate in the Summer Branches, the school's summer camps, again this year. Summer Branches add fun to summer break and are also a great way for prospective families to "test drive" the school. Keep an eye out for this year's Summer Branches schedule.

## Williamsport Area School District

### **WXPI Starts Mini Course at Williamsport Middle School**

WXPI Williamsport Community Radio is pleased to announce the successful start of the WXPI Diversity Outreach Project Media Broadcast Training Series Mini Course at The Williamsport Area Middle School. Following a successful workshop at the Williamsport

*(Continued on Page 6)*



Williamsport Middle School students (from left) Serena Lewis, Misty Poling and Arianna Gaul show us the "peace" sign during the WXPI Diversity Outreach Project Media Training Series Mini Course.

# INSIDE OUR SCHOOLS...

(Continued from Page 5)

Area Middle School after-school program on December 9, 2013, which was attended by over 70 students in grades 7 and 8, the Media Broadcast Training Series mini course officially began on February 3, 2014. The purpose of the Media Broadcast



*Serena Lewis working the keyboard.*

Training Series, as well as The Diversity Outreach Project in general, is to reach out to the district's middle school students and to provide them with a positive educational experience by engaging them creatively and encouraging them to stay focused on their studies.

The Media Broadcast Training Series mini course seeks to supplement the important creative aspects of the curriculum that too often have been the first things to disappear in these trying economic times. It is the hope of WXPI and it's partners that this project can help encourage participants in improving the reading, writing, problem solving and other necessary skills that are essential to succeed in an increasingly competitive world.

To help raise funds for this collaborative project, WXPI has received a grant from the Pennsylvania Department of Community and Economic Development (DCED) through the Neighborhood Assistance Program. The DCED program offers substantial state tax credits to businesses that contribute to the project. The credits can be used by small businesses including partnerships, LLCs, and S-Corps, with the tax credits passing through to the partners, as well as by large corporations.

Please join WXPI in making radio fun for local youth! For more information about the **Diversity Outreach Project**, visit [www.wxpidop.org](http://www.wxpidop.org). To help support this project, please contact Warren Earl or Brian Spies via email at [project@wxpidop.org](mailto:project@wxpidop.org).

**CLEAN, CONVENIENT LOCATION**  
620 Arch Street • Newberry, PA 17701  
Open Daily 6:30 AM - 9:30 PM • Off Street Park

# LYCOMING PRESBYTERIAN CHURCH CALENDAR OF EVENTS

Lycoming Presbyterian Church is located at 825 Arch Street in Williamsport.

## APRIL 17, 2014 MAUNDY SERVICE

7:00 p.m.  
Chapel  
ALL ARE WELCOME

## APRIL 20, 2014 EASTER SUNDAY SUNRISE SERVICE

7:30 a.m.  
Colonial Park  
(weather permitting, inclement weather - Chapel)  
Continental Breakfast following service  
Moring Worship, 10:45 a.m.  
ALL ARE WELCOME

## APRIL 25, 2014 SPAGHETTI DINNER

4:30 p.m.- 6:30 p.m.  
Fellowship Hall, Handicap Accessible  
Take-out available at 4:00 p.m.  
Spaghetti, Sauce, 2 Large Meatballs  
Salad, Rolls, Beverage, Homemade Desserts

## MAY 17, 2014 RUMMAGE SALE

8:00 a.m. - 1:00 p.m.  
Fellowship Hall  
Food Available

## MAY 20, 2014 PRIMARY ELECTION & ELECTION DAY BAKE SALE

8th Ward Voters of Williamsport  
Fellowship Hall - Enter off Funston Avenue

**John M. Confer - Supervisor, Funeral Director**  
**John E. Springman - Funeral Director**

1914 Memorial Avenue Williamsport, PA 17701  
Phone: (570) 323-7717 Email: [keth@knightconfer.com](mailto:keth@knightconfer.com)  
[www.KnightConferFuneralHome.com](http://www.KnightConferFuneralHome.com)

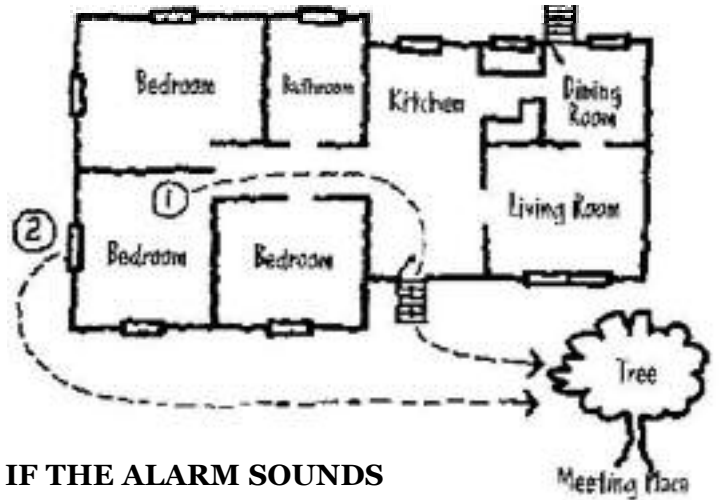


## ESCAPE PLANNING

### *Helpful Tips to Keep Your Family Safe*

#### SAFETY TIPS

- MAKE a home escape plan. Draw a map of your home showing all doors and windows. Discuss the plan with everyone in your home.
- KNOW at least two ways out of every room, if possible. Make sure all doors and windows leading outside open easily.
- HAVE an outside meeting place (like a tree, light pole or mailbox) a safe distance from the home where everyone should meet.
- PRACTICE your home fire drill at night and during the day with everyone in your home, twice a year.
- PRACTICE using different ways out.
- TEACH children how to escape on their own in case you can't help them.
- CLOSE doors behind you as you leave



#### IF THE ALARM SOUNDS

- If the smoke alarm sounds, **GET OUT AND STAY OUT**. Never go back inside for people or pets.
- If you have to escape through smoke, **GET LOW AND GO** under the smoke to your way out.
- CALL the fire department from outside your home.

Plan Ahead! If a fire breaks out in your home, you may only have a few minutes to get out safely once the smoke alarm sounds. Everyone needs to know what to do and where to go if there is a fire.

## NEW HOME FOR LOCAL CHURCH

### *Newberry Church of Christ Relocates... But Stays in Newberry*

The Newberry Church of Christ has moved to her new worship center at 2101 Linn Street (the former Ascension Catholic Church). An Open House will be announced after renovations are complete. NCC is a growing and vibrant church desiring to meet the spiritual, emotional, and physical needs of our community through Bible-centered teaching and family-oriented ministries.

Sunday morning worship features a traditional service at 8:00 AM followed by a contemporary service at 10:30. Sunday Bible classes and small group studies during the week are held for all ages.

You are invited to attend a *Reenactment of the Lord's Supper with Holy Communion* on Maundy Thursday, April 17 at 7:00 PM. *Easter Sunday* worship will be at 8:00 and 10:30 AM with a coffee and donut fellowship held between services at the Christian Center across the street.



★ ★ ★ **SPECIAL VOTER SECTION** ★ ★ ★  
**GENERAL PRIMARY ELECTION • Tuesday, May 20, 2014**  
*The NCP and insideNewberry does not endorse any political party or candidate.*

**VOTER INFO**

- The 2014 General Primary will occur on **Tuesday, May 20, 2014**. Polls are open on Election Day from 7:00 AM continuously until 8:00 PM. Federal, state, and party offices are on the ballot this year.
- The federal office on the ballot is U.S. Representative for the 10th U.S. Congressional District.
- The state offices on the ballot are Governor, Lieutenant Governor, and State Representatives for the 83rd and 84th PA Legislative Districts. The Williamsport precincts are in the 83rd District.
- The Republican and Democratic party offices on the ballot are State Committee Members (countywide) and Local Committeeman and Committeewoman (1 each per precinct). The party offices will be elected at the General Primary and will not appear on the November ballot.
- **Monday, April 21, 2014 at 5:00 PM** is the last day to register or make changes to your registration before the General Primary.
- **Tuesday, April 29, 2014** Sample Ballots will be available upon request in the Voter Services office or on the Lycoming County website **www.lyco.org**.
- **Tuesday, May 13, 2014 at 5:00 PM** is the last day to apply for a civilian absentee ballot before the General Primary. If you will be out of your



municipality during the hours the polling places are open on Election Day, or if you have an illness or physical disability that prohibits you from going to your polling place, then you may vote by absentee. If an emergency occurs after the deadline to apply for an absentee ballot, contact the Voter Services office immediately for the procedure to follow to apply for an emergency absentee ballot.

- A list of Newberry polling places is shown on page 9. If you are uncertain of where to vote, contact Voter Services.
- Some new poll workers were elected at the November 2013 Municipal Election and are beginning their four-year terms of office at Newberry precincts. *Please make them feel welcome.*
- If you need a voter registration application or an absentee ballot application you can:
  - **Download an application** to send to the Voter Services office on the Lycoming County website [www.lyco.org](http://www.lyco.org) and click on "Voter Services."
  - **Stop in Lycoming County Voter Services** at 330 Pine Street, Executive Plaza, 1st Floor, Room 101, Williamsport, PA 17701.
  - **Call Voter Services** at 327-2267.

Please contact the Voter Services office at 327-2267 with any questions.

~ Sandra P. Adams  
 Director of Elections and Registration







# LETTERS TO THE EDITOR

## What Makes Newberry a Community?

*I have lived in the community of Newberry for almost 16 years. There are those who have lived in this west end of town longer, a lot longer, all your years. Do you have any more claim to ownership of the community than those who are renting a home here for the first time?*

*What makes Newberry a community? Is it just the west end of town and where we live or is it how we choose to live at the address we call home? In the last issue of **insideNewberry** a request was made to join the Newberry Community Partnership. There were NO responses. No one stepped up. We must have been too busy shoveling snow. We, all of us, are busy.*

*To be a true community I believe neighbors, whether you get along with them or even know their names, need to volunteer time and talents, to contribute to where you live, to make it better. And yes I know that there are lots of ways to do that: join a civic organization, Newberry Lions or Lioness, Newberry Community Partnership, participate in the many parent/school organizations, be an active congregant in a Newberry church that might be involved in this neighborhood, pick up litter in September or April, or just pick up litter in front of your own home or business. There are many unsung volunteers in these organizations and homes. Just don't think spring when we will be outside more, in the yard and around the neighborhood. Try thinking of what would make your neighborhood a better place to live.*

*~ Submitted by Margaret Tupper,  
Arch Street, Newberry*

**Editor's Note:** Margaret's letter is referring to the front page Message from the Newberry Community Partnership that appeared in the recent January issue of **insideNewberry**. Below find a reprint of that message.

# PARTY WITH MIZ IDA & THE ALL NIGHTS ON THIS YEAR'S HIAWATHA CRUISE IF YOU ARE ONE OF 5 LUCKY WINNERS

Raffle tickets will soon be available for the Newberry Community Partnership's party on the Hiawatha with Miz Ida & the All Nightas, Sunday, September 21st from 6:00 to 8:00 pm. Five 1st prize winners can invite 17 friends to join them on the cruise. Must be 21 to attend. Five additional great prizes, ticket outlets and more details will be announced. Tickets will be \$5.00 each or 5 for \$20.00. Call 570-279-7937 or 570-601-0298 for details.


*Proceeds benefit the Newberry Community Partnership (501c3) to support the continued efforts to bring quality of life improvements and community events to our neighborhood.*

State Farm®  
Providing Insurance and Financial Services  
Home Office, Bloomington, Illinois 61710



Ralph Steer, Agent  
1945 West 4th Street  
Williamsport, PA 17701  
Bus: 570-323-2111  
Ralph@ralphsteer.com  
P045151 4/04





**SANDERS  
MORTUARY, LTD.**

*Refined service. Tasteful surroundings.  
Family owned since 1938.*

William H. Kieser – Supervisor, F.D.  
Michael R. Lingg – Funeral Director  
Larry H. & Nancy A. Sanders – Funeral Directors

www.SandersMortuary.com • 821 Diamond St. Williamsport, PA 17701 • 322-3466

The Newberry Community Partnership is very grateful for your support in 2013 however we need your help if we are to continue to play a vital role in revitalizing and reinvigorating our proud and historic neighborhood. If you are passionate about making our community a more attractive, safer, more interesting place to live and work, consider offering your time and talents to the Newberry Community Partnership. We are seeking board and committee members as well as ideas and financial support as we work toward making the West End the "Best End". Please join us. For more information contact Alannah Gabriel, Elm Street Manager, by mail at 913 Diamond Street, Williamsport, PA 17701; Phone 570-601-0298 or email [agabrielnpc@yahoo.com](mailto:agabrielnpc@yahoo.com).



President Lyndon B. Johnson signs the Economic Opportunity Act in 1964



## ***Lycoming-Clinton Counties Commission for Community Action (STEP) Celebrates 50 Years of Community Action***

January 8, 2014 marked the 50th Anniversary of President Lyndon B. Johnson's State of the Union address declaring the launch of an "unconditional war on poverty," which renewed the nation's commitment to fighting poverty through targeted programs such as Community Action, Medicare, Medicaid, Head Start, Pell Grants, expansions to Social Security, and Nutrition Assistance. In the decade following the 1964 introduction of the War on Poverty, poverty rates in the U.S. dropped to their lowest level since the cumulation of comprehensive records starting in 1958: from 17.3% in 1964 when the Economic Opportunity Act was implemented to 11.1% in 1973. Since then, rates have fluctuated between 11% and 15.2%. According to the U.S. Census Bureau, the average poverty rate in Pennsylvania is 13.1%; Lycoming County has a poverty rate of 14.2%, while the Clinton

County has a poverty rate of 17.0%.

STEP is one of 1,100 Community Action Agencies in the United States. In Pennsylvania, STEP is part of a network of 43 Community Action Agencies and is the third largest agency by budget. STEP is a member of the national Community Action Partnership and the Community Action Association of Pennsylvania. Through its mission to engage diverse individuals, families, and communities in the pursuit of social and economic success, STEP is continuing the work that President Johnson initiated 50 years ago. STEP serves individuals in Lycoming and Clinton counties with programs organized under five Pathways to Success: Early Learning, Housing Options, Workforce Development, Community Collaboration, and Independent Living.

## **LYCOMING COUNTY MASTER GARDENERS PLANT SALE**

***Friday May 9th from 12 Noon – til Plants are Sold!***

The Lycoming County Master Gardeners perennial plant sale will feature hundreds of perennial plants for sale for \$3 each. This annual event is held at the Bruce E. Henry Park, Ritchey Street and Miller Avenue, Williamsport, PA in one of the pavilions. A large variety will be on hand, emphasizing good pollinator plant choices. As this is a very popular event, sales will open promptly at noon and go until all plants are sold.



# LINCOLN SENIOR COMMUNITY CENTER

STEP Building (Old Lincoln School - Lower Level)  
2138 Lincoln Street • Newberry

## Let's Do Lunch at Noon!

Monday thru Friday • Call 327-5483  
by 10:30 AM Day Before to Order a Hot Meal

Computer Use & Treadmill Available  
Morning Coffee Klatch with Friends

### CALENDER OF EVENTS

**SPECIAL GUEST SPEAKER**  
Wednesday, May 28 - 11 AM  
Rheumatologist, Dr. Olinginski  
will discuss various forms of arthritis.

**SETBACK TOURNAMENT**  
First Thursday of the Month • Pre-registration

**BINGO**  
Mondays, Wednesdays, & Fridays 12:30 PM  
Healthy Steps In Motion Exercise for Mature Adults  
Tuesdays & Thursdays 9:30 AM  
Bible Study w/Local Clergy Wednesdays 12:15 PM

**BLOOD PRESSURE CLINIC**  
Performed by Penn College Student Nurses  
2nd Wednesday of the Month – call for details.

**TAI CHI INSTRUCTION**  
Tuesdays 5 to 6 PM

**ZUMBA GOLD**  
Wednesdays 4:30 to 5:30 PM



The world famous Repasz Band gave an inaugural concert in 1913, but the bandshell was officially dedicated in 1914. Photo courtesy of James V. Brown Library archives.

## BANDSHELL MARKS CENTENNIAL

### June 1st Celebration Planned

**The Dr. Kenneth Cooper Bandshell** Centennial Rededication Ceremony on Sunday, June 1st at 6:00 pm will launch a series of musical performances to take place every Sunday at 7:00 PM throughout the summer. The world famous Repasz Band, Imperial Teteques Band, Phillips Fancy Footwork, JR Scott, Williamsport Civic Ballet, Melissa Augustine Dance Academy, Uptown Music Collective, Williamsport Symphony Orchestra, Billtown Brass, Cooley Dance Company, Williamsport High School Band, and the Mayor's Community Sing are among the performers expected to grace the bandshell stage. A complete summer program will be available in June.

In 2009 the bandshell was renamed the **Dr. Kenneth Cooper Bandshell** in honor of Dr. Cooper (April 19, 1921- March 23, 2011) who dedicated much of his life to the care and maintenance of the park and served as chairman of the Brandon Park Commission for 21 years.

The hour-long rededication ceremony is now in the planning stages. Rain date is June 8, 2014.

~ Submitted by Sally Wiegand, Chairman,  
Brandon Park Commission



12 Photo courtesy of Richard James

## OUR HOME PAGE...

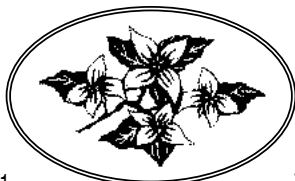
[www.insidenewberry.com](http://www.insidenewberry.com)

We're on the World Wide Web! You can now find **insideNewberry** on the internet. Read current and past issues of the newsletter.



## NEWBERRY ESTATES

A NATIONALLY RECOGNIZED COMMUNITY OF QUALITY®  
Professionally Managed by Community Realty Management, Inc.



2500 Federal Avenue  
Suite 357  
Williamsport, PA 17701

570-323-8910  
Fax 570-323-1918  
T.D.D. 1-800-654-5984

# REGULAR MEETINGS OF CIVIC & OTHER GROUPS IN NEWBERRY

These active groups welcome new members, just call to let them know you'd like to attend. To be listed, contact Editor, *insideNewberry*, 913 Diamond Street, Newberry, PA 17701 or [insideNewberry@yahoo.com](mailto:insideNewberry@yahoo.com).

**BOY SCOUT TROOP 14**.....326-5569

Every Monday • 7:30 PM  
St. John's–Newberry UMC • 2101 Newberry Street  
Rob Beiter, Scoutmaster  
Open to boys age 11 or older

**CUB SCOUT PACK 14** .....326-5569

Every Wednesday • 7:00 PM  
St. John's–Newberry UMC • 2101 Newberry Street  
Open to boys in Grades 1-5 or ages 7-11

**NARCOTICS ANONYMOUS (NA) &  
ALCOHOLICS ANONYMOUS (AA)**.....323-6297

Narcotics Anonymous Meets  
Sundays Noon-2 PM • WECCC

Alcoholics Anonymous Meets  
Wednesdays & Saturdays at 7:00 PM • WECCC

If attending, use side entrance off gravel parking lot.  
These support groups welcome new members.  
For additional information, call the  
WECCC office at the number listed above.

**NEWBERRY COMMUNITY PARTNERSHIP** .....601-0298

2nd Thursday of the Month • 6:00 PM • WECCC

*If you would like to present an idea or have a  
neighborhood concern, please call to be  
placed on the agenda.*

**NEWBERRY LIONESS**.....322-8302

1st Tuesday • 6:30 PM Dinner followed by Meeting  
St. Matthew Lutheran Church • Linn Street

**NEWBERRY LIONS**.....326-0259, 323-9825

2nd & 4th Tuesday • 6:30 PM  
Lions Building • Newberry Park

**ORIGINAL SONS OF ITALY – LODGE 138** .....326-9222

2nd Monday • 7:00 PM

**SENIOR CITIZENS  
OF NEWBERRY** .....326-5569

2nd Monday beginning March to June • Noon  
Saint John's–Newberry UMC • 2101 Newberry Street.

The first time you come is free and after that is \$5.  
We serve a delicious meal that includes main course,  
vegetables, salad and dessert.

If you would like to come,  
call the church office at 326-5569.



## DISCOVER WILLIAMSPORT ON YOUR BICYCLE DURING THE 7<sup>TH</sup> ANNUAL TOUR DE BILL

*Saturday, June 7 Beginning 8-10 AM  
Meet at Wegmans  
201 Williams Street, Williamsport, PA*

Enjoy seeing Williamsport East and Williamsport West at bike speed. Enjoy our scenic 15 mile route on the RiverWalk or see our city up close and personal on our bike-friendly streets. If you're new to biking, choose a shorter route. If you'd like more riding, take one of our new longer routes. For more information, go to <http://williamsportymca.org>

- Cost: \$20 - adults; \$5 - 18 and under
- Event Contact: 570-322-8902

## HOWARD STREET GRADE CROSSING

### Noise Relief Update

Plans to actively explore wayside horns are underway as we go to press. Travel plans to visit a site had to be rescheduled due to weather conditions. Look for an update in the July issue.



(570) 329-2808

[www.newberryexchange.com](http://www.newberryexchange.com)

## NEWBERRY XCHANGE

*BUY & SELL*

Diamonds • Gold • Televisions • DVDs  
Video Games • CDs • Coins and More

846 Diamond Street

Williamsport, PA 17701

# NEWS FROM NORTH CENTRAL SIGHT SERVICES, INC.

## *Second Dining in the Dark Fundraiser Held*

North Central Sight Services, Inc. held its second Dining in the Dark fundraiser in collaboration with the School of Business and Hospitality at the Pennsylvania College of Technology (PCT) on Saturday, March 1st. The dinner was hosted by students and faculty of Le Jeune Chef Restaurant. One-hundred-nine generous and adventurous diners attended the semi-formal event.

Participants were blindfolded and served by students of the school. The event serves as an educational experience for both the diners and students. Frederick Becker, Dean of Business and Hospitality, commented on the success of last year's event. "Last year's Dining in the Dark event offered our students and staff a fantastic opportunity to learn how to serve guests who are blind. It was fun to practice serving the guests and those who attended had a great time, too."



*Dean Frederick Becker at the podium*

Educating the students seeking a career in this field is an intricate component of the event. "A server with this understanding will make him or her more



*insideNewberry's* managing editor Alannah Gabriel is led to her seat.



*The Retina Group of PA employees being served during the Dining in the Dark fundraiser.*

comfortable at creating the most enjoyable dining experience possible for guests with a visual impairment," said Heather Engle, Community Educator at North Central Sight Services.

Engle provided key training for the students which included methods of communication, for example, describing the placement of items on the table using the clock method.

Net proceeds from the event benefited North Central Sight Services, Inc. whose mission is to provide exceptional programs, services, and employment to the blind and visually impaired, as well as excellent education, prevention services, and products to all customers. Visit [www.ncsight.org](http://www.ncsight.org) for more information.



*Guests enjoyed delicious Teres Major*

**LOW VISION STORE Tools for Everyday**

**NORTH CENTRAL SIGHT SERVICES INC.**

**FEATURED PRODUCT**

**EZ-See Low Vision Playing Cards**  
Letters and numbers measure 1-3/8"  
Suits are easily identified by colors  
Perfect for game nights!

2121 Reach Road • Store Hours: Mon.-Fri. 8:30AM - 4:00PM





675 Arch St.  
Newberry

322-8473



Tiremasters founder Jim Sauers is all smiles as he gives a simultaneous hug to daughter Denise (left) and granddaughter Jess (right).

## KEEPING IT IN THE FAMILY

### 3rd Generation Family Member Joins Tiremasters

Tiremasters, a family owned business located at 675 Arch Street in Newberry, is happy to welcome Jess Blaser, daughter of Denise Sauers Barner and granddaughter of founder Jim Sauers, to join the business. Jess started her training under the tutelage of her mother who ran the business side of Tiremasters for 18 years before retiring. “Jess was a quick study, said Denise, with a smile. It must be in the genes.” Jess said, “Working with family is something I love and I get to bring my dog Baxter, Tiremaster’s new mascot with me. She added, I’ve enjoyed getting to know our customers. They are amazing.”

# NEWBERRY SUB SHOP

“Locally Owned & Operated Since 1980”  
2002 Newberry Street • Williamsport  
Open Daily 10-9 • Sundays 4-8  
**570-326-5544**

Sherry W. Strayer  
Owner

Dawn M. Flexer  
Manager

CREDIT CARDS NOW ACCEPTED

## Ask the Lawyer



Answers to questions are provided by

Newberry resident, Christian Frey of Lepley, Engelman and Yaw. Attorney Frey has been practicing law in Pennsylvania since 2003.

**Question:** A credit card company has a judgment against me. Can they attach my wages and my checking account to satisfy the judgment?

**Answer:** There is no wage garnishment in Pennsylvania for a judgment associated with credit card debt. However, a creditor may be able to access funds in your bank account. Pennsylvania allows you to have a small exemption of \$300.00.

In Pennsylvania creditors may also execute their judgment on motor vehicles, real estate or personal property. This means that creditors may attach and/or place a lien against your property and expose the property to a sale in order to collect their judgment amount. Consequently, it is oftentimes best to work toward satisfying the judgment, or, if your debts are significant, consider consulting with a bankruptcy attorney.

The “Answer” above is for general information only. Small variations in individual fact patterns often change the legal outcome or an attorney’s conclusion. You should **not** solely rely on the information above. For complete and accurate legal advice you must seek and retain an attorney to represent you.

Lifelong Williamsport native & Newberry resident

## Christian D. Frey

Estates • Wills • Power of Attorney  
Boundary Disputes • Contract Law

Lepley, Engelman & Yaw  
ATTORNEYS-AT-LAW LLC

Call 323-3768

140 East Third Street • Williamsport • www.lepleylaw.com



If you’ve missed an issue of *insideNewberry*, back issues are available. Send your request with a small donation to cover cost of mailing to *insideNewberry* 913 Diamond Street, Williamsport, PA 17701.

# Brodart's Big Book and DVD Sale!

**BRO  
DART**

Sat. June 7, 8 a.m.-1p.m.  
Warehouse entrance off 3rd St.

We welcome your tax deductible donations to support the continued efforts of the Newberry Community Partnership to bring quality of life improvements and community events to our neighborhood. Send contributions to NCP, 913 Diamond Street, Williamsport, PA 17701. For information call 570-601-0298

## WEST END COPY CENTER

Inside

**MAS**Printing

Quality, Dependable Printing Since 1982

116 Emery Street • Williamsport • 326-9222

Located Near Williamsport Industrial Park, off Reach Road

Email: [masprinting@comcast.net](mailto:masprinting@comcast.net)

TYPESETTING & DESIGN SERVICES  
FREE PICK-UP & DELIVERY • CONVENIENT PARKING

Digital Full Color and Black & White Copies  
8 1/2 x 11 and 11 x 17 Formats

Come in and see us or simply email your files!

Large selection of paper for your business or home printer

Printers of *insideNewberry* Newsletter

### insideNewberry Subscription Form

Receive the next 4 issues of *insideNewberry* just by making a donation – and you decide the amount!\* Simply clip out this form, complete it and mail it with your donation check payable to *insideNewberry*. You can even give it as a gift!

Send my subscription to *insideNewberry* to:

Name \_\_\_\_\_

Address \_\_\_\_\_

Phone (optional) \_\_\_\_\_

Email (optional) \_\_\_\_\_

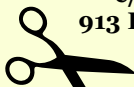
Please mail completed form to:

*insideNewberry*

c/o Newberry Community Partnership

913 Diamond Street • Williamsport PA 17701

\*\$12.75 Suggested Minimum



## UPCOMING EVENTS

### APRIL 2014

#### Saturday, April 12 – Easter Egg Festival

• 10:00 AM to 1:00 PM, Mulberry Street

#### Saturday, April 12 – Christy Haberstroh Easter Egg Hunt

• 2:00 PM, Brandon Park (Rain Date – Sunday, April 13)

#### Sunday, April 13 – Palm Sunday

#### Thursday, April 17 – Reenactment of the Lord's Supper with Holy Communion

• 7:00 PM, Newberry Church of Christ, 2101 Linn Street

#### Friday, April 18 – Good Friday

#### Sunday, April 20 – Easter Sunday Worship

• 8:00 & 10:30 AM, Newberry Church of Christ, 2101 Linn St.

#### Monday, April 21 – City-Wide Spring Yard Debris Clean-Up Begins

• See page 2 for details

#### Saturday, April 26 – NCP Annual Spring Clean-Up

• 9:30 AM to Noon, Meet at WECCC, West Fourth and Diamond Streets, see Page 1 for details

### MAY 2014

#### Saturday, May 4 – Newberry Lions Journey for Sight

• Meet at 2:00 PM, Old Lycoming Fire Hall, Dewey Avenue, see Page 3 for details

#### Monday, May 5 – Cinco de Mayo

#### Friday, May 9 – Lycoming County Master Gardeners Plant Sale

• Starts at Noon, Bruce E. Henry Park, Ritchey Street and Miller Avenue, see Page 7 for details

#### Sunday, May 11 – Mother's Day

#### Saturday, May 10 – West Branch School Fair

• See page 6 for details

#### Saturday, May 17 – NCP Day, Music Fest Jam Fest, Flea Market & Yard Sale

• 8:00 AM to 4:00 PM, Newberry Park, see Page 1 for details

#### Tuesday, May 20 – 2014 General Primary Election

#### Thursday, May 22 – City-Wide Spring Yard Debris Clean-Up Ends

• See page 2 for details

#### Monday, May 26 – Memorial Day

### JUNE 2014

#### Sunday, June 1 – Brandon Park Bandshell Centennial Celebration

• 6:00 PM, Brandon Park (Rain Date – June 8)

#### Saturday, June 7 – 7th Annual Tour de Bill

• 8:00 to 10:00 AM, Meet at Wegmans, 201 Williams Street

#### Saturday, June 14 – Soap Box Derby

• 10:00 AM, Market Street

#### Saturday, June 14 – Flag March

• 5:30 PM, Downtown Williamsport

#### Sunday, June 15 – Father's Day

#### Friday, June 20 & Saturday, June 21 – Homemade Days

• Friday, June 20, 10:00 AM to 7:00 PM, Brandon Park

• Saturday, June 21, 9:00 AM to 4:00 PM, Brandon Park