



## insideNewberry

To honor the past...inform the present... envision the future, *insideNewberry* is published quarterly by Newberry Community Partnership (NCP) as a service to the neighborhood to promote community pride and facilitate communication between residents, schools, civic organizations and businesses. NCP is a non-profit community based organization established in 2006. Please support our sponsors who made this issue possible!

- Albright Life
- Best Self Storage
- Brodart
- Dunkin Donuts
- Equinox
- J-Styles Salon
- Knight-Confer Funeral Home
- Laundry Basket
- Lepley, Engleman & Yaw
- MAS Printing
- M&T Bank
- Mileto's Sub Shop
- Newberry Estates
- Newberry Lions Club
- Newberry Sub Shop
- Newberry Xchange
- Ralph Steer State Farm
- Rod Chubb School of Music
- Sanders Mortuary
- Tiremasters
- Turner's Market
- Woodlands Bank

**insideNewberry**  
913 Diamond Street  
Williamsport, PA 17701  
insideNewberry@yahoo.com  
www.insidenewberry.com  
Phone (570) 601-0298

Alannah Gabriel, **Managing Editor**

Janice Hiller, **Graphic Design**

Rod Chubb, **Web Design**

Your stories and photos are always welcome.

Photos will be returned.



## NCP FESTIVAL IN NEWBERRY PARK SLATED FOR MAY 5TH

### *Flea Market/Yard Sale Added to Scheduled Events!*

Our first festival fund raiser held in Newberry Park last April was so well received we're doing it again on Saturday, May 5th, 8 AM to 3 PM. Repeatedly we heard, "This is the best thing that's happened in Newberry in quite awhile"... "The music really made it great- hope you do it again next year" and "Wow! Loved all the games and activities for the kids."

As we go to press, here's what you can look forward to so far:

**8:00 AM** – NCP Flea Market/Yard Sale opens. Sell unwanted treasures, collectibles, crafts, etc. in Newberry Park. Bring your own tables or sell from your truck. **Spaces are 10'x10' and only \$10.00. Call 570-601-0298 to reserve your space. If you show up without a reservation we cannot guarantee you a space will be available. Space is limited...First come first served.**

**11:00 AM** – The Newberry Lions will honor Newberry's own, LCpl. Abram Howard in a brief ceremony, dedicating a marker and newly planted tree as a memorial to his service and devotion to his country.

Following the ceremony, hang out with your friends and neighbors and enjoy the great music, food and games we've lined up for the day.

Returning to the festival stage are local favorites **City Limits** and **The Nobodys** and **Flipside** making a special appearance with an acoustic set, thanks to Laura "Dolli" Fenstemaker Lambert and City Limits' Cindy Ranck Person. This mix of classic rock, and country rock, will have you dancing and singing right along with the band.

Spend some time **Visiting Inside Newberry** where you can share your stories and memorabilia with visitors and friends. Also returning are members of the **Lycoming County**



The 2012 NCP Festival musical line-up includes (top to bottom): City Limits, The Nobody's and Flipside

(Continued on Page 2)

# NCP FESTIVAL IN NEWBERRY PARK *(Continued from Page 1)*

**Genealogical Society** who will help you locate an ancestor; scan your treasured documents and photos and display their latest Newberry photos.

Joining us this year is **Lycoming County SPCA**, who will feature a Parade of Pets and fun games for pets and their owners.

**Brodart's Spin to Win** a Book, Toilet Toss, Dime Pitch and other games will entertain the youngsters. Games of chance will have grownups leaving with a smile-win or lose- knowing they did their part to support the Newberry Community Partnership.

Nothing beats good food prepared on the spot. Great Italian fare served up by the Original Sons of Italy Lodge 138; fabulous French fries freshly cut and served up hot by our Newberry Lions and guest chefs grilling juicy hot dogs and to pacify your sweet tooth- homemade baked goodies and ice cream.

Look for posters and local media sources for additional activities and surprises.

See you Saturday, May 5th at the Newberry Park Fairgrounds, located off Linn Street between Diamond and Pearl Street (behind Sanders Funeral Home).

**NOTE: This event is co-sponsored by the Newberry Community Partnership and the City of Williamsport with the generous support of the Newberry Lions Club.**

**HELP...We can't do it without you!**

**We're expecting a bigger turn out this year and would appreciate your time, energy and ideas to make this event enjoyable for everyone. Would you be willing to give us an hour of your time to help with flyers, set up, take down or a half hour during the event to relieve helpers with the games? Call 601-0298.**

*Many thanks!*



## **STEP's YouthBuild Program Receives National Recognition**

STEP's YouthBuild, a program within the Workforce Development Pathway, is a youth and community development program that simultaneously addresses core issues facing low-income communities: housing, education, employment, crime prevention, and leadership development. In the YouthBuild program, low-income, at risk young people ages 17 to 24 engage in curriculums including GED/High School Diploma Studies, National Center for Construction and Education Certification, Construction Training, Leadership Development Training, and Transition Services to Employment/Post-Secondary Education.

Dan Merk, Economic & Business Development Director for STEP, Inc., attended the National YouthBuild Directors Association meeting in Washington, D.C., January 30-February 2, to receive two recognitions. The conference was attended by over 150 YouthBuild Directors throughout the United States and the Virgin Islands.

For the second consecutive year, STEP's YouthBuild Program received National Recognition for success in placement of students in either secondary education or a career path. STEP's YouthBuild program was ranked above the national average in all nine performance standard areas defined by YouthBuild USA. The program's placement rate was 74% for enrollees ranking the program twentieth



*Members of YouthBuild along with Program Coordinators show off their National Award. Back row: Rob Getz, Instructor; Dan Merk, Program Director; John Hill, YouthBuild Participant; Fred Goldey, YouthBuild Participant. Front row: Nicole Ilinski, YouthBuild Participant*

overall. The placement rate was 97% for program completers ranking it twelfth out of all programs reporting in the United States. The success of the YouthBuild program is clearly a result of a team-oriented effort of staff and students both past and present from the YouthBuild program.

YouthBuild is completing its third year of a three-year grant from the US Department of Labor. In 2011, STEP, Inc. received funding from the First Community Foundation of Pennsylvania's Williamsport Lycoming Fund and from local corporate contributors through Department of Community & Economic Development's (DCED) Neighborhood Assistance Tax Credit program to enroll additional youth to perform flood-related housing repairs to Lycoming County residences.



### TIPS FOR RECREATIONAL FIRES

*Always Think of Safety First...And You Too Can Enjoy an Outdoor Fire in Your Backyard*

With unseasonably warm weather upon us already, the desire to shake the effects of *cabin fever* is also here. There's nothing like sitting out back with friends and family, relaxing around a small (recreational) fire. But this beautiful weather also increases the chances of that small recreational fire evolving into an out-of-control grass fire, or worse, a structure fire.

Believe it or not, it is legal to have a recreational fire in your back yard. However, there are rules that **MUST BE FOLLOWED!** For clarity, a "fire pit" includes belowground pits, freestanding fireplaces, and portable devices intended to contain and control outdoor fires.

- A recreational fire must be at least 25 feet from a structure
- All belowground fire pits shall be at least four inches in depth and shall be surrounded on the outside, aboveground, by a non-combustible material such as steel, brick, or masonry. The fire pit cannot exceed three feet in diameter, nor may the fire pile exceed two feet in height. "Home made" fire pits must be inspected by the Fire Inspector before use.
- Belowground fire pits must be located a minimum of 25 feet away from any structure or combustible material.
- Approved portable outdoor fire pits should be used according to the manufacturer's instructions and must not be used within 15 feet of a structure or combustible materials. One- and two-family homes are exempt from this.



- Only natural firewood/commercial logs may be burned.
- Burning of pressure-treated wood, tree trimmings, leaves, yard waste, paper, cardboard, garbage and similar items is not permitted.
- The fire must be constantly **attended** and **supervised** until the fire has been completely extinguished.
- A portable fire extinguisher or other approved extinguishing equipment, such as a garden hose, must be readily available.

Finally, remember that if a complaint is made, the Fire Department responds and the firefighters deem the fire to be a threat to public safety, the fire will be extinguished. If the smoke from your fire creates a nuisance to your neighbor, you may be required to extinguish the fire. If you have any questions concerning these requirements, please call Fire Headquarters at 327-1602. Thank you for your attention to these requirements.

**DUNKIN' DONUTS**  
SERVING YOU SINCE 1973

**OF NEWBERRY**

1975 West Fourth St  
Williamsport, PA 17701

The **NEWBERRY**  
Laundry Basket

**CLEAN, CONVENIENT LOCATION**  
620 Arch Street • Newberry, PA 17701  
Open Daily 6:30 AM - 9:30 PM • Off Street Park

# HOW CAN SOMETHING SO SIMPLE MAKE SUCH A DIFFERENCE?

## You Can Help!



Growing up in a family which fostered a love, respect and immersion in the natural world and coming of age with the first Earth Day, one of my passions has been the care of the environment. “Don’t be a litter bug” was a common phrase in the elementary schools. We also heard, “If you’re not part of the solution, you’re part of the problem”.

Let’s take pride in Newberry’s streets, yards, lots and alley ways and come together on Saturday, April 21st (the day before the 42nd Earth Day!) for the annual spring litter clean up. We will be working in conjunction with the Keep PA Beautiful program.

Come to the corner of West 4th and Diamond Street by 9:30 AM. Gloves, vests, bags and guidance will be available; refreshments too! Children are welcome accompanied by an adult. In the event of rain we will meet the following Saturday the 28th, same time same place. Any questions???? Please call Julie Hulslander at 322-6828.

~ Submitted by Julie Hulslander

**NOTE: This is a registered event of the Great American CleanUp of PA.**

## CITY-WIDE SPRING YARD DEBRIS CLEAN-UP

*Starts Monday, April 16*



Residents may begin to place yard debris out for collection. The city will be picking up Monday, April 16 through Friday, May 11, 2012. All materials must be placed along the curb-line. **PLEASE NOTE:**

- Yard Debris Only – limbs, leaves, plant and shrub clippings.
- Loose Material Only – **NO Plastic bags** will be collected.
- Main Street Pick-Up Only – No alley pick up due to equipment limitations.
- Residents should NOT place yard debris out after the collection has been completed.
- The collection process will take approximately 4 weeks to complete.



## SPRING LITTER PICK-UP & PLANTING

**SATURDAY, APRIL 21, 2012**

**9:30 AM – NOON**

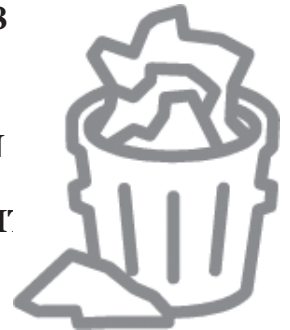
**Rain Date – April 28, 2012**

**MEET IN FRONT OF THE WEST END CHRISTIAN COMMUNITY CENTER**

**Corner of West Fourth & Diamond Streets**

- We need you and your neighbors to lend a hand to tidy-up our neighborhood.
- Trash bags, gloves, refreshments will all be provided.
- To let us know you are coming or for more info call 601-0298

**ORGANIZED BY THE SAFE, CLEAN & GREEN TEAM OF THE NEWBERRY COMMUNITY PARTNERSHIP**



**SANDERS MORTUARY, LTD.**

Refined service. Tasteful surroundings.  
Family owned since 1938.

William H. Kieser – Supervisor, F.D.  
Michael R. Lingg – Funeral Director  
Larry H. & Nancy A. Sanders – Funeral Directors

www.SandersMortuary.com • 821 Diamond St. Williamsport, PA 17701 • 322-3466

# INSIDE OUR SCHOOLS...Reports from Newberry's Schools

## Jackson Elementary School

### *Our Doors Are Open to the Community*

Jackson Elementary School has an open invitation to parents and families. There are many opportunities to visit the school, such as the annual musical winter concerts and plays held in the first semester.

The second semester has already brought us Read Skate and Calculate on March 5th. Our teachers, along with the Title One reading staff, created a family event in which parents could learn more about the important state assessments given to all students across Pennsylvania in March. This event included activities coordinated by Ms. Todd the Physical Education teacher that involved all the students. Parents also learned from teachers the expectation and layout of the tests, shown ways the teacher prepares students through daily instruction and what they could do at home to support this assessment.

On March 26th, the PTO sponsored a Basket Raffle and Art Show. This event supported the financial efforts of our Parent Teacher Organization. Many families left with great gift baskets full of donated items from many Williamsport Area businesses. A display of student's artwork and musical performances added to the festivities.

Coming up on Thursday, April 26th is Book Bingo also sponsored by our Title One reading teacher. Families play with their children and win free books to take home. This event is an annual favorite of the Jackson community.

With just one 9 week marking period left, the April 4th & 5th parent/teacher conferences always brings in families to learn about the progress their child has made to date.

We are planning our spring music concerts and plays for the month of May. The Jackson Spring concert is scheduled for May 9th. The 5th grade musical is May 30th.

Besides events bringing visitors to our school, we also have a team of volunteers who assist with a kindergarten tutoring program. With the appropriate clearances you too could be a part of the Jackson Eagle team. As we continue our school year, we need the assistance and support of our community in our efforts to educate our children.



Remember: kindergarten registration April 2 to April 5 at all elementary schools. After the 5th, you may register at the District Service Center, 2780 W. Fourth Street.

## Lycoming Nursery School

### *Check Us Out!*

Many parents need to send their children to daycare because both parents work full-time. However, there are a lot of families that have a parent at home, family/friends that help and private sitters. Lycoming Nursery School is an affordable non-profit school that offers excellent social and academic preparation in addition to music class, Storymobile, Stretch-n-Grow and monthly field trips. They are located at 825 Arch Street in the Lycoming Presbyterian Church across from Dunkin Donuts. Although the school is located at Lycoming Presbyterian Church it is non-sectarian, which means any faith/religion is welcome and encouraged to attend.



The school is a unique opportunity for children to grow and learn with teachers that are licensed by the Pennsylvania Department of Education. Three classes are available, divided by age: a 3 year old class, 4 year old class and 5 year old class. Some children attend 1 to 2 years, however many children attend all 3 years receiving 3 unique school experiences with each class specifically geared toward the age and appropriate activities. They are a family-oriented school and parents can be involved as much as they wish to be. Parents are welcome to attend special event days and field trips and there are opportunities to serve on the parent-run board. Classes are held from 9:00 AM to 12 Noon, Tuesday, Wednesday and Thursday - September through May. If there is enough interest, one optional class may be offered to 4 and 5 year olds on Friday from 9 AM to Noon.

Applications are currently being accepted for the 2012/2013 school year. Space is limited. To find out more about Lycoming Nursery School, visit their website [www.lycomingnurseryschool.com](http://www.lycomingnurseryschool.com) or call the registrar, Jenn Charchuk, at 567-7619.

# INSIDE OUR SCHOOLS... *(Continued from Page 5)*

## Saint John's School of The Arts

### ***Fun Facts About SOTA***

- We're celebrating our 15th year of music and fine arts ministry!
- Students of all ages (children, youth, and adults) attend lessons and classes at SOTA.
- SOTA is a great place to meet and make friends who want to learn the arts in an encouraging and positive environment.
- It's a place of affirmation and encouragement. All are welcome.
- There are hundreds of music and art schools throughout the nation, but only a handful are faith-based like SOTA.
- Not a week goes by that someone doesn't say "I'm so thankful for SOTA and what it's meant to my life!"
- SOTA's gotten "social!" – Information, photos, press releases, personal stories, how to donate, and more can be found on our "social media" sites via the links below or by calling the office.
- We'd be happy to tell you more about SOTA...just contact us!



This year's Olivia S. Walden Memorial Scholarship recipients are Maggie Hutchinson (Montoursville), Hannah Layton (Williamsport), Rebecca Layton (Williamsport), and Andrea Sanford (Jersey Shore). The Olivia S. Walden Memorial Scholarship was established in 2008 to benefit School of the Arts dance students.

**For more info on SOTA's scholarships, events and more, contact us at 327-5575 OR at <http://schoolofthearts.susumc.org> OR at <http://sotafriends.org> OR at [www.facebook.com/sotafriends](http://www.facebook.com/sotafriends) OR at [www.twitter.com/sotafriends](http://www.twitter.com/sotafriends).**

## West Branch School

### ***Community Involvement***



Reaching out to the community is an important part of learning at West Branch School. Service learning takes many forms at WBS, including food collection for the needy and litter pickup in Newberry. Collaboration with the Presbyterian Home at Williamsport provides yet another opportunity for the children to learn outside of the classroom walls. Teacher Stacie Lakatos established the relationship last year with the Presbyterian Home and Renná Engle, executive director. Engle and Lakatos agree that the intergenerational relationships formed through the

experience are mutually beneficial to students and residents. The program consists of biweekly visits by small groups of



*WBS student with Presbyterian Home resident*

students in kindergarten through second grade. The residents and students participate in a variety of activities that are planned alternately by the home and Lakatos. "The students bring such joy to the residents. The friendships that are formed are meaningful. It is moving to experience the interaction between these dear children and the residents," Lakatos said. "The residents learn from the students and the students from the residents. My goal for my

### ***Students to be Featured***

Saint John's School of the Arts students will be featured between 2:00 and 4:00 PM on Saturday afternoon, April 21 during the school's annual "Afternoon of Recitals." The event will include an art exhibition by students of Jason Paulhamus, voice students of Ellen Davis and Sarah Decker, piano students of Bethany Fisher and Diane Havrilla, flute students of Anne Keely, woodwind and brass students of Philip Herfort, and drama students of Lea Frymire. No tickets are necessary.

### ***Scholarship Recipients Announced***

Two piano students at Saint John's School of the Arts have been named recipients of Monica M. Weaver Memorial Scholarships for the 2012 winter/spring semester. The students honored are: David Hutchinson (Montoursville), and Ben Manetta (Cogan Station).

"The Monica M. Weaver Memorial Scholarship Fund was established in 1997, and since then more than 140 students have benefited," said Anne Keely, the School's director.

# INSIDE OUR SCHOOLS...

(Continued from Page 5)

students in this program is to broaden their lives and to demonstrate that kindness makes an impact.”

Along with celebrating their 40th anniversary this year, WBS is more



WBS student with Presbyterian Home resident

excited than ever to hold its **Annual Fair and Music Festival on Saturday, May 12th.**

Festivities will begin at noon with outstanding food, arts and crafts, music, and more! “My first year attending the fair, I was amazed at how many people came to support the school. There are so many activities for children. It was fun watching the kids make beaded jewelry with an artist and enjoy the talent on the band stages. Everyone was having a good time!”

Natali Prindle, operations manager of the school stated. “Now that I’m a part of the West Branch family, I see what it takes to produce an event of this caliber. The way the parents work together to create the fair is remarkable. So much time goes into it. The very values I’ve recently learned that West Branch was found upon are still present, 40 years later”

Prindle said. Congratulations, West Branch. Here’s to the next 40!

Enjoying WBS’s Fair and Music Festival in 2011.



## DISCOVER WILLIAMSPORT – AND MORE – BY BICYCLE

*Benefits YMCA Strong Kids Campaign*

**SATURDAY, JUNE 9, 2012**  
**WILLIAMSPORT YMCA • 320 Elmira Street**

### COST:

**Before May 26** – \$15 Adult, \$5 Under 18

Groups of 5 or more: \$10 Adults, \$5 Under 18

**After May 26** – \$20 Adult, \$5 Under 18

Groups of 5 or more: \$15 Adults, \$5 Under 18

Riders get goodie bags, water bottles, cue sheets, maps, rest stop snacks. Everyone is invited to a party with music and food for purchase at the Y beginning at 11:30 AM.

### CHOOSE YOUR RIDE:

- 8 AM Depart; Rose Valley Lake:** hilly 45 miles of rolling mountains, valleys, and lake. Finish on Williamsport’s Riverwalk
- 9 AM Depart; Williamsport Discovery:** relatively flat 15 miles through Williamsport’s neighborhoods
- 10 AM Depart; Susquehanna Riverwalk:** historic district, easy 5 miles of the river, mountains, and city.

All routes include sharing the road with cars. Riders must obey traffic rules and wear helmets. Cyclists are responsible for their own safety and must sign a liability waiver. Children under 14 must be accompanied by an adult. Route will be marked. RAIN OR SHINE.

Register at [www.williamsportymca.org](http://www.williamsportymca.org), by mail, at the Y front desk, or at the Y Arena morning of the ride. Visit [www.tourdebill.org](http://www.tourdebill.org) for more info and our “Bike Rider Training Program.” Ride benefits YMCA Strong Kids Campaign, providing Y scholarships to needy children. For more info: Louisa Stone, Chair, 322-8902, [LMStone7@comcast.net](mailto:LMStone7@comcast.net) or Megan Casson, 323-7134, Ext. 47, [seniordir@williamsportymca.org](mailto:seniordir@williamsportymca.org)

(570) 329-2808

[www.newberryexchange.com](http://www.newberryexchange.com)

**NEWBERRY XCHANGE**  
**BUY & SELL**

Diamonds • Gold • Televisions • DVDs  
Video Games • CDs • Coins and More

846 Diamond Street

Williamsport, PA 17701

**J styles salon**

FULL SERVICE SALON

1969 West Fourth Street • Williamsport, PA 17701

Dunkin Donuts Plaza in Newberry

570.567.7086

Walk-Ins Welcome • Open 7 Days Per Week!

# ★ SPECIAL VOTER SECTION ★

**PLEASE NOTE: *insideNewberry* does not support or endorse any particular candidate or party. All candidates for the upcoming election were given the opportunity to place an advertisement in this section.**

- The 2012 Primary Election will be held on **Tuesday, April 24, 2012. Polls are open on Election Day from 7:00 AM continuously until 8:00 PM.** Please remember Pennsylvania has what is called a Closed Primary, which only allows Republicans and Democrats to vote for candidates. If there is a referendum on the ballot, all registered voters may vote for the referendum regardless of party affiliation.
- The offices on the ballot in the 2012 Primary Election are: President of the United States, United States Senator, Attorney General, Auditor General, State Treasurer, Representative Congress 10th District, Senator in the General Assembly 23rd District, Representative General Assembly 83rd District, or Representative General Assembly 84th District, Delegate to the National Convention, and Alternate Delegate to the National Convention.
- Pennsylvania law provides that the deadline to apply to register to vote is 30 days prior to each election. Monday, March 26, 2012 at 5:00 PM was the last day to register or make changes to your registration before the Primary Election. If you are not registered for the Primary, please be sure to register in time for the General Election in November.
- Pennsylvania law also provides that the deadline to apply for a civilian absentee ballot application is 7 days prior to each election. **Tuesday, April 17, 2012 at 5:00 PM is the last day to apply for a civilian absentee ballot before the Primary Election.** If you will be out of your municipality during the hours the polling places are open on Election Day, or if you have an illness or physical disability that prohibits you

## NEWBERRY POLL LOCATIONS

### 6th & 7th Wards

St. Matthews Lutheran Church • 2233 Linn Street  
No Candidate Signage

### 8th Ward

Lycoming Presbyterian Church Fellowship Hall  
825 Arch Street • Funston Avenue Entrance

from going to your polling place, then you may vote by absentee. If an emergency occurs after the deadline to apply for an absentee ballot, contact the Voter Services office for the procedure to follow to apply for an emergency absentee ballot.

- If you need a voter registration application or an absentee ballot application you can:

**Download an application** on the Lycoming County website [www.lyco.org](http://www.lyco.org). Click on "Voter Services"

**Stop in Lycoming County Voter Services** for an application at 330 Pine Street, Executive Plaza, 1st Floor, Room 101, Williamsport, PA 17701

**Call Voter Services** at 327-2267


Sample ballots will be available upon request in the Voter Services office starting Monday, April 9, 2012.

Please contact the Voter Services office at 327-2267 with any questions or if you are uncertain of where to vote.

~ Sandra P. Adams  
Director of Elections and Registration

Support your  
**2012**  
**Republican**  
**Candidates**

Endorsed Incumbents



U.S. Congress, 10<sup>th</sup> District  
 **Tom Marino**

PA Senate, 23<sup>rd</sup> District  
 **Gene Yaw**

PA House of Representatives, 84<sup>th</sup> District  
 **Garth Everett**

Paid for by Lycoming County Republican Committee

Rep. Rick Mirabito



Fighting For Rural Pennsylvania

Paid For By Committee to Elect Rick Mirabito, Shirley Abernathy, Treasurer





# REGULAR MEETINGS OF CIVIC & OTHER GROUPS IN NEWBERRY

These active groups welcome new members, just call to let them know you'd like to attend. To be listed, contact Editor, *insideNewberry*, 913 Diamond Street, Newberry, PA 17701 or [insideNewberry@yahoo.com](mailto:insideNewberry@yahoo.com).

**BOY SCOUT TROOP 14**.....326-5569  
Don Cohick, Scoutmaster • Every Monday • 7:30 PM  
St. John's–Newberry UMC • 2101 Newberry Street  
Open to boys age 11 or older

**CUB SCOUT PACK 14** .....326-5569  
Every Wednesday • 7:00 PM  
St. John's–Newberry UMC • 2101 Newberry Street  
Open to boys in Grades 1-5 or ages 7-11

**NARCOTICS ANONYMOUS (NA) &  
ALCOHOLICS ANONYMOUS (AA)** .....323-6297  
Narcotics Anonymous Meets  
Sundays Noon-2 PM • WECCC

Alcoholics Anonymous Meets  
Wednesdays & Saturdays at 7:00 PM • WECCC

If attending, use side entrance off gravel parking lot.  
These support groups welcome new members.  
For additional information, call the  
WECCC office at the number listed above

**NEWBERRY COMMUNITY  
PARTNERSHIP**.....601-0298  
2nd Thursday of the Month  
6:00 PM • WECCC  
*If you would like to present an idea or have a  
neighborhood concern, please call to be  
placed on the agenda.*

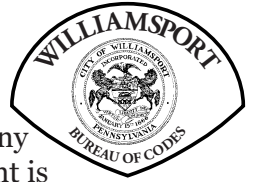
**NEWBERRY LIONESSE** .....322-8302  
1st Tuesday • 6:30 PM Dinner followed by Meeting  
St. Matthew Lutheran Church • Linn Street

**NEWBERRY LIONS** .....326-0259, 323-9756, 323-9825  
2nd & 4th Tuesday • 6:30 PM  
Lions Building • Newberry Park

**ORIGINAL SONS OF ITALY – LODGE 138** .....326-9222  
2nd Monday • 7:00 PM

# CODES CORNER

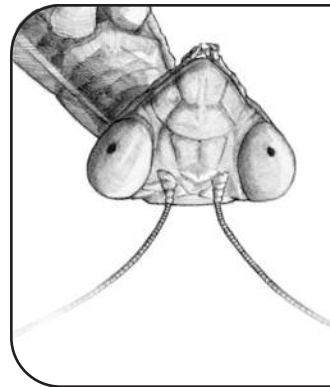
## Summer Ordinances



The City of Williamsport has many ordinances that the codes department is required to enforce. During the summer months some of the most frequent violations that the department has to investigate are as follows:

1. High Grass, The maximum height for grass is 10”.
2. Weeds, All properties must be free of all weeds.
3. Vehicles – no unlicensed or inoperative vehicle may be stored on your property or on the street, or at any time can it be in a state of disassembly, disrepair, or in the process of being stripped or dismantled.
4. Garbage and trash, All garbage and trash must be placed in containers with lids that seal. Trash cannot be placed in bags outside.
5. Gas grills, when using gas grills they must be a minimum of 10’ away for anything combustible.

If you see these types of violations call the Codes Department at (570) 327-7519. We will investigate the compliant and require the violation to be removed. Violations that continue or are an ongoing problem the city has no other choice but to issue fines and citations.



Shop  
[www.equinoxltd.com](http://www.equinoxltd.com)  
for great outdoor  
gear

**EQUINOX**  
Fundamental Tools for Earth Travelers  
WILLIAMSPORT, PA

# DON'T MISS HOME MADE DAYS AT SUSQUEHANNA STATE PARK!

Annual Event  
Scheduled for  
July 6th and 7th

Home Made Days returns to Susquehanna State Park on Friday, July 6 and Saturday, July 7. Now in its fourth year, the fundraiser benefits the Hiawatha. Vendor applications are now available at [www.rideHiawatha.com](http://www.rideHiawatha.com). For more information contact Kate Tinney at the Hiawatha Administrative Office at 570-326-2500.



30TH ANNIVERSARY  
1982 – 2012



675 Arch St.  
Newberry

322-8473

# LINCOLN SENIOR COMMUNITY CENTER

STEP Building  
(The Old Lincoln School - Lower Level)  
2138 Lincoln Street • Newberry

## Let's Do Lunch at Noon!

Monday thru Friday • Call 327-5483  
by 10:30 AM Day Before to Order a Hot Meal

Computer Use & Treadmill Available  
Morning Coffee Klatch with Friends

### CALENDER OF EVENTS

#### SETBACK TOURNAMENT

First Thursday of the Month • Pre-registration

Big Screen Movies Every Tuesday 12:45 PM

#### BINGO

Mondays, Wednesdays, & Fridays 12:30 PM

Healthy Steps In Motion Exercise for Mature Adults  
Tuesdays & Thursdays 9:30 AM

Bible Study w/Local Clergy Wednesdays 12:15 PM



Some folks rely on the River Valley Transit bus system to get them to their destinations safely and affordably.

## RIVER VALLEY TRANSIT NEWS

3-Month Youth  
Pass is a Deal!



RVT is dedicated to getting you there and for those 17 years old and under, the Youth Pass is available at a greatly discounted rate. The Youth Pass is just \$20 and can be used to ride any fixed route bus for any 3 consecutive months throughout the year. There are 20 fixed routes that sprawl across most of Lycoming County and with a Youth Pass, people 17 or younger can go to the Lycoming Mall, movie theaters schools, gyms or work places. "A one day EZ Pass is \$2.50 and a 31-Day EZ Pass is \$38, so savings are significant when you compare to the low price of the Youth Pass" said General Manager Bill Nichols, Jr., River Valley Transit.

The EZ Fare passes are simple to use and the most convenient way to ride the bus. Instead of using cash or tokens simply purchase the EZ Fare Youth Pass and use it like a prepaid credit card when boarding the bus. EZ Fare Youth Passes may be purchased at the Trade and Transit Centre building at the corner of Pine and West Third Streets or at the RVT Administrative Office at 1500 West Third Street. For more information contact RVT at 570-326-2500 or visit [www.rideRVT.com](http://www.rideRVT.com).

If you've missed an issue of *insideNewberry*, back issues are available. Send your request with a small donation to cover cost of mailing to *insideNewberry* 913 Diamond Street, Williamsport, PA 17701.

## TURNER'S MARKET

2424 West Fourth Street • Williamsport

*The best kept secret in Newberry!*

SUBS • SALADS • GROCERIES

# 570-326-4411

## BEST SELF STORAGE

BEST Location...  
BEST Price!

- Traditional & Climate Controlled Units
- Fenced & Gate Access



10% Discount on a Year's Lease  
★★★★★  
or a AAA Discount

[www.bestselfstorage.net](http://www.bestselfstorage.net)

Williamsport • 2887 South Reach Road • 323-7300

Lock Haven • 115 Washington St. • 748-7778

## NEWBERRY

1980 W. FOURTH ST.  
MON.-FRI. 8-6  
SAT. 8-12  
327-1550

# WOODLANDS BANK

## NCP WEBSITE

### Sorry for Delay!

If you've ever dealt with new construction, you know that it's not uncommon to experience delays... and so it is with our promised new website. We plan to be up and running by the end of April... we think it will be worth the wait.



## LIGHT OF LIBERTY MONUMENT BIRTHDAY

### Newberry Icon Turns 90



This May our monument "The Light of Liberty" will celebrate the 90th year of her arrival at the intersection of West Fourth and Arch Streets. The Newberry Community Partnership and *insideNewberry* thinks it would be great to throw a party to honor her; the World War 1 soldiers, sailors and Red Cross Nurses in whose memory she was erected and the men and women of the community who worked diligently for two years to make this unique and beautiful memorial a reality.

No date has been set as yet, sometime in late July or August has been suggested; exactly what form the celebration will take is not clear. Do you like the idea? If so, the NCP would like your support to make it a reality. Do join with us to make it happen. Are you or anyone you know related to any of the men and women who are named on the memorial, or were instrumental in erecting the monument? Do you have pictures of them or the celebration parade and dedication? Please contact us at 570-601-0298 or email [insideNewberry@yahoo.com](mailto:insideNewberry@yahoo.com).

## NEWBERRY LIONS NEWS

### Annual Lions Parade & Fair Scheduled for June 12th thru the 16th

Highlight your calendar from Tuesday, June 12th to Saturday, June 16th so you will be sure to join in the festivities at Newberry Park to support the Newberry Lions. Circle Wednesday the 13th - Parade Night! Three prizes will be awarded in each of the following categories: Costume, Wheels & Pets. Rain date is Thursday, June 14th.



The fair opens nightly 6:00 PM to enjoy all your favorite foods prepared by Lions members – hamburgers, hot sausage, hot dogs, pizza and their famous French fries. Be sure to save room for funnel cakes made just for you by members of the Newberry Lioness Club.

The rides start at 7:00 PM and be sure to try your luck at bingo and games of skill and chance... all to benefit the Newberry Lions and the needed services they provide to our community.

### Journey for Sight Walk

Meet at 2:00 PM Sunday, May 6th at Old Lycoming Fire Hall on Dewey Avenue and journey on the bike path to the Lycoming Creek Loins Social Hall, where you will be served lunch. Attention non-profit groups - benefit your own charity too!! The Lions will share 50% of the funds you raise with your own charity. Contact a Lion for more details.

*All Newberry Lions fundraising efforts support many state and local charities for the blind as well as programs such as Newberry Little League and West End Babe Ruth Baseball.*

*Lifelong Williamsport native & Newberry resident*

## Christian D. Frey

Estates • Wills • Power of Attorney  
Boundary Disputes • Contract Law

**Lepley, Engelman & Yaw**  
ATTORNEYS - AT - LAW LLC

Call 323-3768

140 East Third Street • Williamsport • [www.lepleylaw.com](http://www.lepleylaw.com)



## NEWBERRY LIONS CLUB, INC.



*"We serve our community and our nation."*

PO Box 4051  
Newberry Station  
Williamsport, PA 17701

Contact any Lions member to learn more about Newberry Lions or to become a member.

# NEW ADULT DAY CARE PROGRAM AT ALBRIGHT LIFE

## *Individuals Being Accepted Now*

Albright LIFE Lycoming-Clinton, 901 Memorial Avenue, Williamsport, recently announced that it is accepting individuals for its new Adult Day Care program. According to John Ressler, Albright LIFE executive director, "Many people think we have been providing Adult Day Care since we opened almost four years ago. Unfortunately, they don't realize that Albright LIFE (Living Independently for Elders) is based on a national model of care called PACE (Program of All Inclusive Care for the Elderly) that provides complete medical support to older individuals to keep them independent in their own home and the community."

The focus of the new Adult Day Care program is to provide a place for seniors to get out of their homes, socialize and share a meal with others, participate in various activities, and make new friends. Individuals enrolled in the Adult Day Care program will continue to see their primary care doctor and manage their medicines and specialty medical appointments. "Many will wonder if the Adult Day Care program will deter individuals from attending local senior centers. This is certainly not the case. Senior centers are incredibly valuable in our community because they are designed specifically for seniors who are completely independent" Ressler adds.

*Kate Bolden, Albright LIFE participant, reads a story to Rhoni Brown, a student of the Williamsport YMCA's pre-school program. Visits and activities with local pre-school students are just one of the many activities available as part of Albright LIFE's Adult Day Care program.*



Adult Day Care participants do not have to attend daily, but they will choose a schedule when they enroll so the Center has enough staff, meals, and other resources available. The earliest drop-off time is 8 AM and participants must be picked up by 4 PM.

### **Enrollment Criteria For Adult Day Care Participants:**

- Age 55 or older
- Live in the LIFE coverage area, which includes all of Lycoming County and portions of Clinton County (zip codes 16848, 17721, 17726, 17745, 17747, 17748, 17750, 17751, 17767, 17779)
- Have condition(s) such as: memory issues, trouble taking medicines, or the need for assistance with personal care (bathing, using the restroom, and staying physically and mentally active)

To learn more, please call 322-5433 and ask to speak to Sandy Hill, intake coordinator.

Maybe tomorrow  
I'll get to the drugstore—  
but maybe not.

You have medical prescriptions for a reason. Running out of your medications or forgetting to take them just won't do. We make sure you get the medications you need, when you need them. Come spend the day with us.

**322-LIFE**  
AlbrightLIFE.org

**ALBRIGHT<sup>+</sup>**  
**LIFE**  
*Living Independently For Elders*  
A MINISTRY OF ALBRIGHT CARE SERVICES  
Senior Care **Unlike Any Other**

Funding may be provided by Medicare, Medicaid, Long Term Care Insurance or private resources. Must reside in Lycoming and part of Clinton County (zip codes 16848, 17721, 17726, 17745, 17747, 17748, 17750, 17751, 17767, 17779), be over age 55 and determined medically eligible by the Area Agency on Aging and be able to live safely in the community with LIFE services. All non-emergency services must be provided/approved by LIFE.

## **Brodart's Big Book and DVD Sale!**

**BRO  
DART**

**Sat. June 9, 8a.m.-1p.m.**  
Warehouse entrance off 3rd St.

[www.tartanbooks.com](http://www.tartanbooks.com)

# 2012 BILLTOWN FILM FESTIVAL...AWESOME!

## Art, Women & the Environment Theme

Get ready to enjoy 3 nights of great independent films at the Third Annual Billtown Film Festival (BFF) to be held at the Community Arts Center in downtown Williamsport, on April 19 - 21, 2012.

This year's theme is *Art, Women & the Environment*. Films from local filmmakers will be featured. The carefully selected films will highlight Williamsport's burgeoning art scene; the talents of women filmmakers, women artists and the environmental challenges facing the Central Pennsylvania region along with notable films from national and international filmmakers.

### Opening Night to Benefit

#### YWCA and Breast Cancer Fund

BFF has joined forces with LUNAFEST to raise funds for the Williamsport YWCA and the Breast Cancer Fund. LUNAFEST, a traveling film festival designed by, for and about women, will screen on Thursday, April 19th only.

"We want everyone to come out on Thursday April 19th!" BFF founder Richard James said. The proceeds raised on opening night will benefit the YWCA (85%) and LUNAFEST's campaign to support the Breast Cancer Fund (15% or \$250.00, whatever is greater).

LUNAFEST was established in 2000 by LUNA®, Makers of the Whole Nutrition Bar for Women® to simultaneously promote women filmmakers, raise awareness for women's issues and support worthy women's nonprofit organizations. LUNA is proud of its ten year partnership with the Breast Cancer Fund, a pioneering organization whose mission is to identify and eliminate the environmental causes of the disease.

In the past, the festival has been free to the public. James explains, "To take the BFF to the next level, we have to charge admission so we established a ticket price of \$5.00 per show. We're building for the future. We want to bring actors and directors and others to Williamsport to talk about the craft of filmmaking. We're going to need money to do that."

The Community Arts Center is located at 220 West 4th Street. Festival doors open 6:30 PM. Shows will start at 7:00 PM. For more information visit the Billtown Film Festival at <http://billtownfilmfestival.com/>.



**Billtown Film Festival**  
Art, Women and the Environment  
featuring

**LUNAFEST**  
short films by, for, about Women


Community Arts Center  
April 19, 20 and 21, 2012  
Doors open at 6:30pm  
Shows begin at 7pm  
Tickets: \$5.00

Proceeds from 4/19/2012 to benefit Williamsport YWCA & Breast Cancer Fund

Ruth by Giovanni Ciniselli in the James V. Brown Library Please support our sponsors

**BFF**

Community Arts Center Williamsport Lyrcoming Community Foundation J.V. Brown Library Williamsport Sun-Gazette Susquehanna GraphicHive

<b>Mary Mileto</b> Proprietor	Est. 1972	<b>Arlene Ardrey</b> Manager
<h1>Mileto's Sub Shop</h1>		
<i>"We are family and big on people"</i>		
<b>TUESDAYS – SENIOR DAY (55 plus)</b>		
<b>20% OFF TOTAL PURCHASE</b>		
– We do all fundraisers –		
2127 West Fourth Street Williamsport, PA		 <b>323-0103</b>

<p>State Farm® Providing Insurance and Financial Services Home Office, Bloomington, Illinois 61710</p> <p>Ralph Steer, Agent 1945 West 4th Street Williamsport, PA 17701 Bus: 570-323-2111 Ralph@ralphsteer.com P045151 4/04</p>	  
--	--


# NEWBERRY ESTATES

A NATIONALLY RECOGNIZED COMMUNITY OF QUALITY®  
Professionally Managed by Community Realty Management, Inc.



2500 Federal Avenue  
Suite 357  
Williamsport, PA 17701

570-323-8910  
Fax 570-323-1918  
T.D.D. 1-800-654-5984



# M&T Bank.

## Understanding what's important.



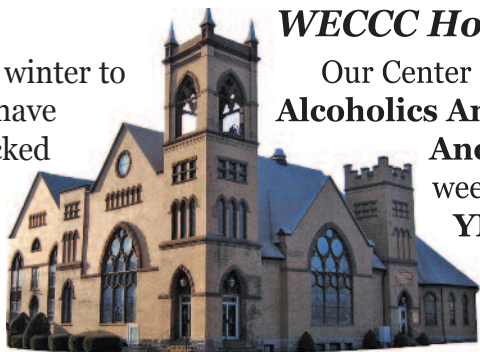


[www.mtb.com](http://www.mtb.com) © 2007 M&T Bank. Member FDIC.

# WEST END CHRISTIAN COMMUNITY CENTER NEWS

## Clothes Closet

To prepare for the transition from winter to spring, our Clothes Closet volunteers have packed up the winter woolies and stocked the Clothes Closet with Capri's, shorts and light weight casual dress items for the whole family. In order to make the transition from their Clothes Closet to yours, they've priced everything so you can't resist the bargains.



## Oak Pews For Sale

The Center has large, curved, oak pews for sale. If you are a craft person looking for 100 year old oak, come to The Center and check out the pews. The possibilities for use of the wood are endless. No reasonable offer will be turned down.

## Thrift Shop

Our Thrift Shop is also ready with decorations for the upcoming holidays. Remember, we also offer a selection of baby items, sheets, dishes, small appliances and so much more! Come shop with us. We're open Monday 9 AM to 2 PM, Tuesday 9 AM to Noon, Wednesday 9 AM to Noon and again from 4:30 PM to 7 PM, Thursday 9 AM to 2 PM, and Saturday mornings 8:30 AM to Noon.

## WECCC Hosts Programs

Our Center also hosts 12-step programs such as **Alcoholics Anonymous** and **Narcotics Anonymous** meetings several times a week; **The Young Marines** and the **YMCA Summer Day Camp**.

## Soup Kitchen

Our Soup Kitchen has been serving the public now for 2 years. We are very proud to be of assistance to our community by offering a free lunch on Mondays, Tuesdays, and Thursdays from 11 AM to 1 PM. Come join us for a well-balanced meal.

**Keep the WECCC in mind if you are planning an event and need to rent a place to hold it.**

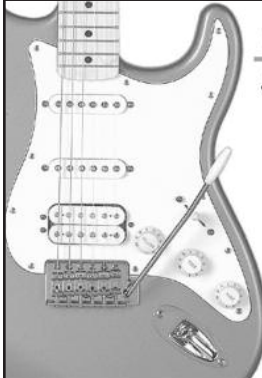
**For additional info on any of the above listed programs, please call the WECCC office at 323-6297.**

## WECCC-Based Organizations

Although not directly affiliated with WECCC, two organizations are based at the Center; The **Northwestern PA Optical Clinic** where qualifying individuals can purchase glasses for only \$36 for single vision and lined bifocals. For information call 570-601-3399 or 800-901-1912. The **Newberry Community Partnership**, your local neighborhood revitalization organization and publisher of *insideNewberry*. Call 601-0298 if you care about your neighborhood and want to help make "the West End the Best End."

The WECCC is located at 901 Diamond Street, at the corner of West Fourth and Diamond Streets. Phone 570-323-6297.

*~ Submitted by Marge Thompson, Director*



**ROD CHUBB**  
**SCHOOL OF GUITAR**  
Private Instruction Available On:  
● Guitar ● Sight Reading  
● Bass ● Improvisation  
● Music Theory ● Composition  
**ALL AGES - ALL STYLES - ALL LEVELS**  
**570.220.3269**  
[www.rodchubb.com](http://www.rodchubb.com)

**NEWBERRY  
SUB SHOP**  
"Locally Owned & Operated Since 1980"  
2002 Newberry Street • Williamsport  
Open Daily 10-9 • Sundays 4-8  
**570-326-5544**

Sherry W. Strayer  
Owner

Dawn M. Flexer  
Manager

**KNIGHT-CONFER  
FUNERAL HOME, INC.**  
John M. Confer  
Supervisor/Owner

John E. Springman  
Funeral Director

**323-7717**  
1914 Memorial Avenue • Williamsport, PA 17701  
[www.knightconferfuneralhome.com](http://www.knightconferfuneralhome.com)  
"Locally Owned & Operated Since 1879"

## insideNewberry Subscription Form

Receive the next 4 issues of *insideNewberry* just by making a donation – and you decide the amount!\* Simply clip out this form, complete it and mail it with your donation check payable to *insideNewberry*. You can even give it as a gift!

Send my subscription to *insideNewberry* to:

Name \_\_\_\_\_

Address \_\_\_\_\_

Phone (optional) \_\_\_\_\_

Email (optional) \_\_\_\_\_

Please mail completed form to:

**insideNewberry**  
c/o Newberry Community Partnership  
913 Diamond Street • Williamsport PA 17701

\*\$12.75 Suggested Minimum



## OUR HOME PAGE... [www.insidenewberry.com](http://www.insidenewberry.com)

We're on the World Wide Web! You can now find *insideNewberry* on the internet. Read current and past issues of the newsletter.



We welcome your tax deductible donations to support the continued efforts of the Newberry Community Partnership to bring quality of life improvements and community events to our neighborhood. Send contributions to NCP, 913 Diamond Street, Williamsport, PA 17701. For information call 570-601-0298

# WEST END COPY CENTER

Inside **MAS** Printing

Quality, Dependable Printing Since 1982

116 Emery Street • Williamsport • 326-9222

Located Near Williamsport Industrial Park, off Reach Road

Email: [masprinting@comcast.net](mailto:masprinting@comcast.net)

TYPESETTING & DESIGN SERVICES  
FREE PICK-UP & DELIVERY • CONVENIENT PARKING

Digital Full Color and Black & White Copies  
8 1/2 x 11 and 11 x 17 Formats

Come in and see us or simply email your files!  
Large selection of paper for your business or home printer

Printers of *insideNewberry* Newsletter

## UPCOMING NEWBERRY-RELATED EVENTS

### APRIL 2012

#### Saturday, April 14 – “J’s Earthly Angels” Public Yard Sale

- 7:00 AM to 2:00 PM, Polish Club, Corner of Arch & Boyd Sts.
- If raining sale will be held in the courtyard under the pavilion.
- Team fundraiser – All proceeds given to the ACS. For more information call 570-220-5696.

#### Thursday, April 19 through Saturday, April 21 – Billtown Film Festival

- Doors open at 6:30 PM, Community Arts Center, West Fourth Street, Williamsport
- Cost \$5.00 – See page 14 for details

#### Saturday, April 21 – Spring Litter CleanUp

- 9:30 AM to Noon, WECCC, 901 Diamond Street, Williamsport
- See page 4 for details

#### Tuesday, April 24 – Primary Election

- Polls open 7:00 AM to 8:00 PM

#### Tuesday, April 24 – Lycoming Prebyterian Church Election Day Bake Sale

- 825 Arch Street Rear, at the Polling Entrance

#### Tuesday, April 24 – Williamsport Citizens Corp. Council

- 7:00 PM, City Hall, 2nd Floor Council Chambers

#### Friday, April 27 – Lycoming Prebyterian Church Spaghetti Dinner

- 4:30 PM to 6:30 PM, 825 Arch Street
- Adults – \$7.00, Children \$4.00

### MAY 2012

#### Saturday, May 5 – Newberry Community Partnership Festival

- 8:00 AM to 3:00 PM, Newberry Park
- See page 1 for details

#### Saturday, May 5 – Downtown Growers Market Opening Day

#### Sunday, May 6 – Lions Journey for Sight

- See page 12 for details

#### Saturday, May 12 – West Branch School Fair

- See page 12 for details

#### Sunday, May 13 – Mother’s Day

### JUNE 2012

#### Saturday, June 9 - Tour De Bill

- Starts at YMCA, Elmira Street, Williamsport
- See page 7 for details

#### Saturday, June 9 - Brodart’s Big Book & DVD Sale

- See page 13 for details

#### Tuesday, June 12 – Newberry Lions Fair Begins

- See page 12 for details

#### Wednesday, June 13 – Lions Parade

- See page 12 for details

#### Thursday, June 14 – God, Country & Community Flag Day March

#### Sunday, June 17 – Father’s Day

### JULY 2012

#### Friday, July 6 & Saturday, July 7 – Home Made Days

- Susquehanna State Park off of Arch Street, Williamsport
- See page 10 for details